

WAAS CH <b>49099</b> <b>W36A</b>	APP CRS <b>006°</b>	Rwy Ldg TDZE Apt Elev	<b>8000</b> <b>873</b> <b>896</b>
--	------------------------	-----------------------------	---

# RNAV (GPS) Y RWY 36L

CINCINNATI/NORTHERN KENTUCKY INTL (CVG)

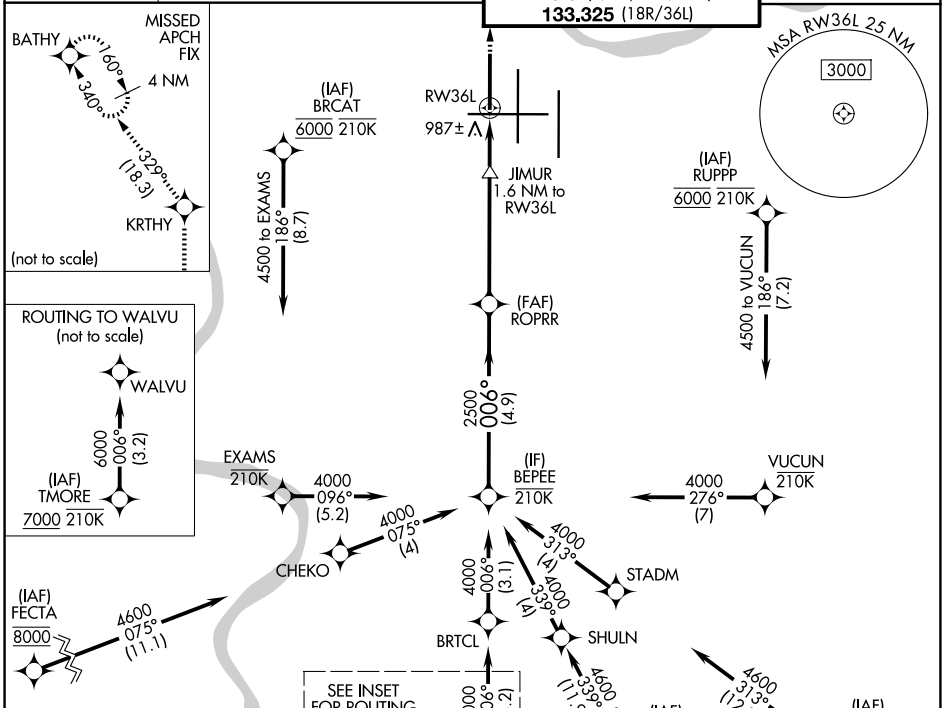
RNP APCH - GPS.

⚠ For uncompensated Baro-VNAV systems, LNAV/VNAV NA below -14°C or above 54°C. Use of FD or AP required during simultaneous operations. Simultaneous approach authorized. LNAV procedure NA during simultaneous operations.

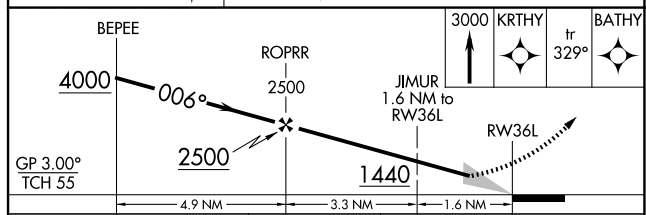
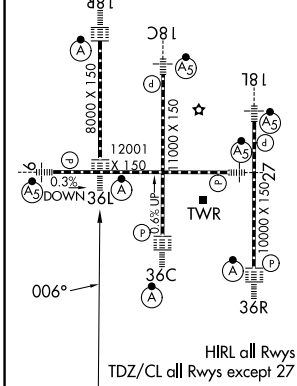
ALSF-2

MISSED APPROACH: Climb to 3000 direct KRTHY and on 329° track to BATHY and hold.

D-ATIS <b>134.375</b>	CINCINNATI APP CON <b>119.7 363.15</b> (090°-269°) <b>123.875 363.15</b> (270°-089°)	CINCINNATI TOWER <b>118.975 360.85</b> (18L/36R) <b>118.3</b> (9/27, 18C/36C) <b>133.325</b> (18R/36L)	GND CON <b>121.7</b>
--------------------------	--	---	-------------------------



ELEV 896	<b>D</b>	TDZE 873
----------	----------	----------



GP 3.00° TCH 55	3000 KRTHY			tr 329°	BATHY
CATEGORY	A	B	C	D	
LPV DA	1073/18		200 (200-½)		
LNAV/VNAV DA	1240/35		367 (400-⅝)		
LNAV MDA	1240/24	367 (400-½)	1240/35	367 (400-⅝)	
CIRCLING	1460-1	564 (600-1)	1560-1¾ 664 (700-1¾)	1560-2 664 (700-2)	

SE-1, 02 OCT 2025 to 30 OCT 2025

SE-1, 02 OCT 2025 to 30 OCT 2025