

LOC/DME I-BTJ <b>109.35</b> Chan 30 (Y)	APP CRS <b>333°</b>	Rwy Ldg TDZE <b>9803</b> <b>995</b> Apt Elev <b>1015</b>
---	------------------------	--

# ILS or LOC RWY 33

ROBERT GRAY AAF (GRK)

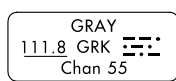
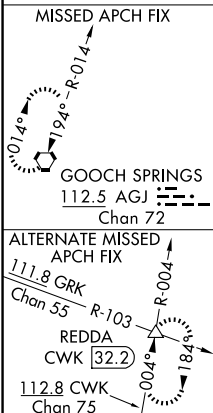
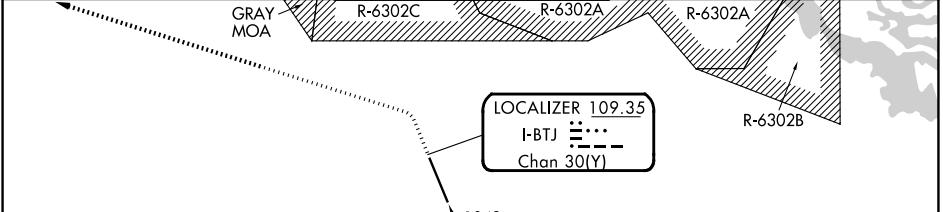
DME or RADAR required.

**ASR/PAR** Circling NA west of Rwy 15-33. For inop ALS, increase S-ILS 33 Cat E visibility to 3/4 SM and S-LOC 33 Cat C/D/E visibility to 1 SM.

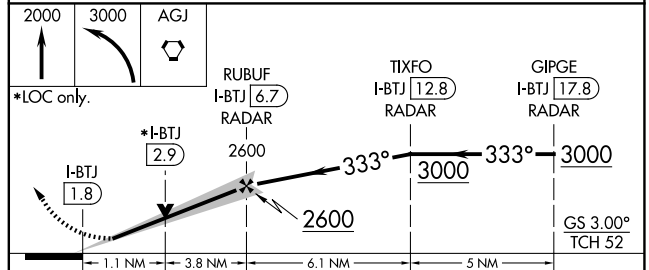
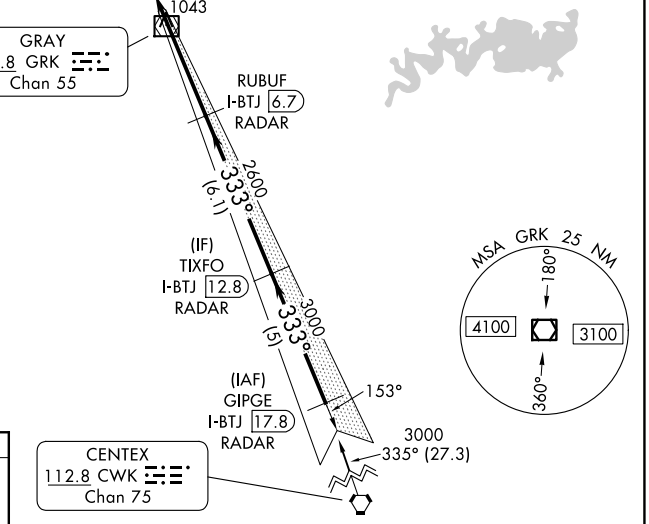
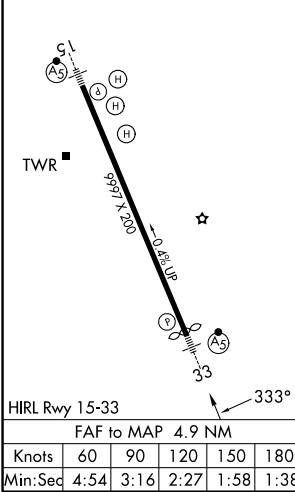


**MISSED APPROACH:** Climb to 2000 then climbing left turn to 3000 direct AGJ VORTAC and hold.

ATIS <b>124.9</b>	GRAY APP CON <b>120.075 323.15</b>	GRAY TOWER <b>120.75 (CTAF) 285.5</b>	GND CON <b>121.8 279.5</b>	CLNC DEL <b>126.2 251.1</b>
----------------------	---------------------------------------	--	-------------------------------	--------------------------------



ELEV 1015	TDZE 995
-----------	----------



CATEGORY	A	B	C	D	E
S-ILS 33	1195-1/2 200 (200-1/2)				
S-LOC 33	1360-1/2	365 (400-1/2)	1360-3/4 365 (400-3/4)		
CIRCLING	1540-1	525 (600-1)	1560-1/2 545 (600-1/2)	1620-2 605 (700-2)	1740-2/2 725 (800-2/2)

SC-3, 02 OCT 2025 to 30 OCT 2025

SC-3, 02 OCT 2025 to 30 OCT 2025