


LOC/DME I-EAU <b>109.5</b> Chan <b>32</b>	APP CRS <b>224°</b>	Rwy Ldg TDZE Apt Elev	<b>7301</b> <b>913</b> <b>913</b>
---	------------------------	-----------------------------	---

# ILS or LOC RWY 22

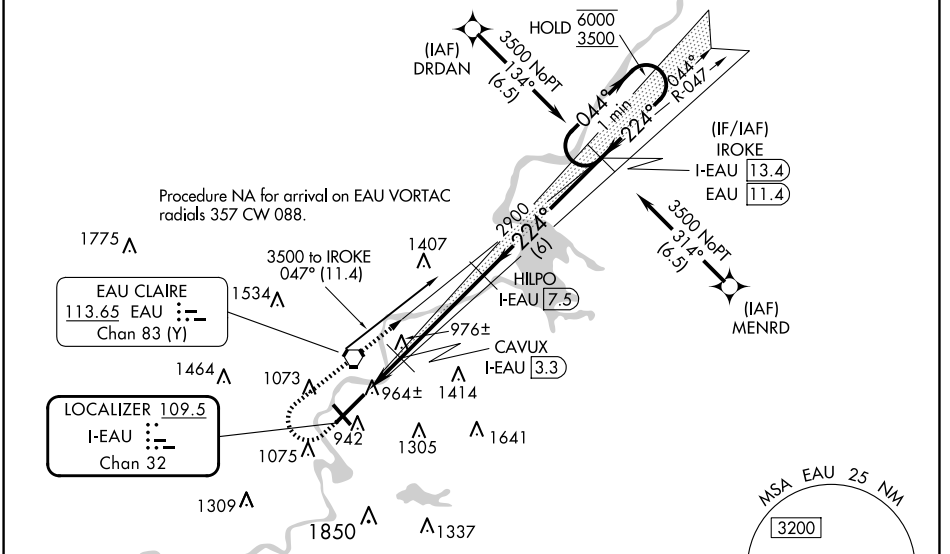
CHIPPEWA VALLEY RGNL (EAU)

From DRDAN and MENRD RNAV-1 GPS required.  
DME required.

**⚠** For inop ALS increase S-LOC 22 Cat C and D visibility to 7/8 SM. For inop ALS when using Rice Lake altimeter setting, increase S-ILS 22 all Cats visibility to 1 SM. When local altimeter setting not received, use Rice Lake altimeter setting and increase DA 110 feet and all MDA 120 feet, increase S-LOC 22 Cat C and D and Circling Cat C visibility 1/4 SM. VDP NA when using Rice Lake altimeter setting.

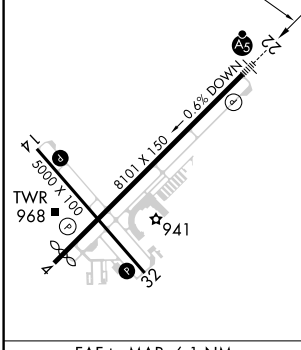
**MALSR**  MISSED APPROACH: Climb to 1600 then climbing right turn to 3500 on EAU VORTAC R-047 to IROKE/I-EAU LOC/DME 13.4 DME and hold.

ATIS <b>126.025</b>	MINNEAPOLIS CENTER <b>125.3 335.6</b>	EAU CLAIRE TOWER ★ <b>118.575 (CTAF) 0</b>	GND CON <b>120.925</b>	UNICOM <b>122.95</b>
------------------------	--	---	---------------------------	-------------------------

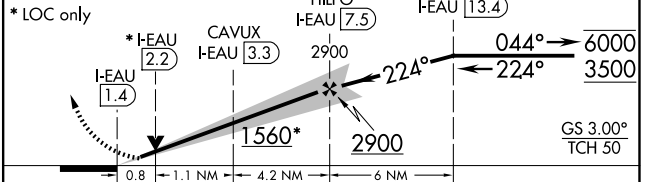


ELEV 913	<b>D</b>	TDZE 913
----------	----------	----------

HIRL Rwy 4-22  
MIRL Rwy 14-32  
REIL Rwy 4 and 14



1600	3500	IROKE I-EAU 13.4	Use I-EAU DME when on the localizer course.	One Minute Holding Pattern
------	------	------------------	---	----------------------------



CATEGORY	A	B	C	D
S-ILS 22	1113-1/2	200 (200-1/2)		
S-LOC 22	1220-1/2	307 (400-1/2)		
<b>C</b> CIRCLING	1480-1 567 (600-1)	1540-1 627 (700-1)	1660-2/4 747 (800-2/4)	2200-3 1287 (1300-3)

FAF to MAP 6.1 NM					
Knots	60	90	120	150	180
Min:Sec	6:06	4:04	3:03	2:26	2:02

EC-3, 02 OCT 2025 to 30 OCT 2025

EC-3, 02 OCT 2025 to 30 OCT 2025