

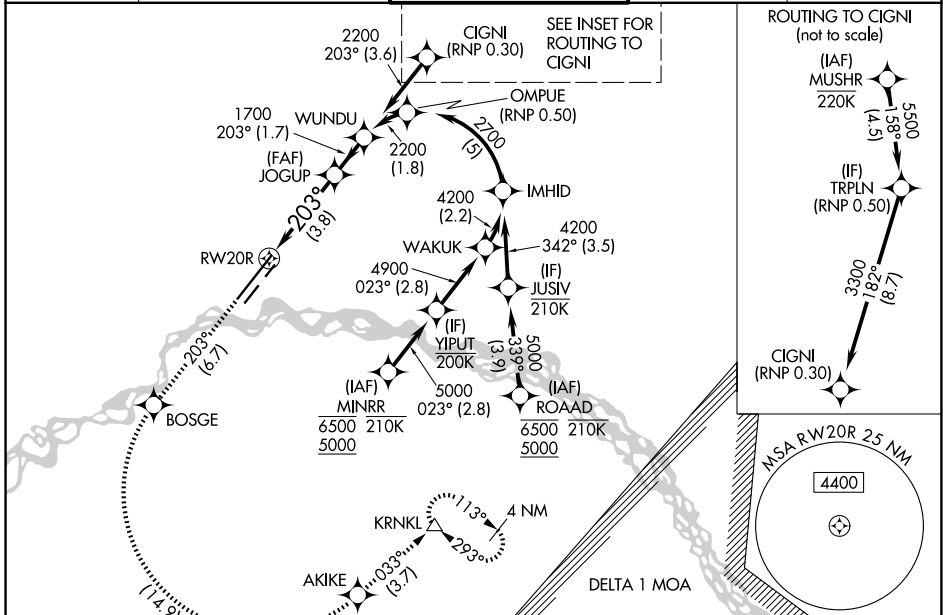
APP CRS	Rwy Ldg <b>11050</b>
<b>203°</b>	TDZE <b>439</b>
	Apt Elev <b>439</b>

# RNAV (RNP) Z RWY 20R

FAIRBANKS INTL (FAI) (PAFA)

RNP AR APCH - GPS.		MALSR	MISSED APPROACH: Climb to 4000 on track 203° to BOSGE then left turn to AKIKE then on track 033° to KRNLK and hold.
-29°C For uncompensated Baro-VNAV systems, procedure NA below -18°C or above 54°C. For inop ALS, increase RNP 0.30 all Cats visibility to 1 1/2 SM.			

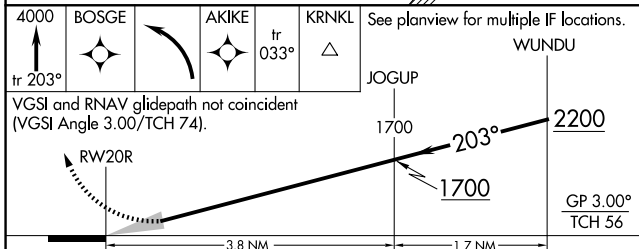
ATIS	FAIRBANKS APP CON	FAIRBANKS TOWER	GND CON	CLNC DEL
<b>124.4</b>	<b>125.35 363.2</b>	<b>118.3 257.8</b>	<b>121.9</b>	<b>127.6</b>



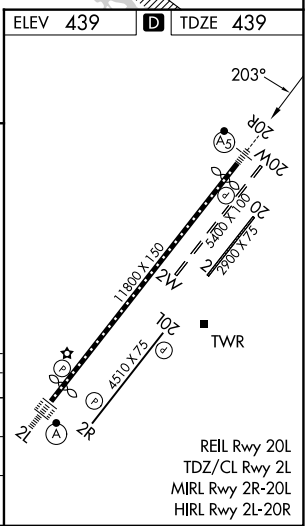
AK, 02 OCT 2025 to 27 NOV 2025

AK, 02 OCT 2025 to 27 NOV 2025

ELEV 439		TDZE 439
----------	--	----------



4000	BOSGE	AKIKE	tr 033°	KRNLK	See planview for multiple IF locations.	WUNDU
tr 203°						
VGS and RNAV glidepath not coincident (VGS Angle 3.00/TCH 74).						
RWY 20R		1700		203°		2200
		3.8 NM				GP 3.00°
						TCH 56



REIL Rwy 20L  
TDZ/CL Rwy 2L  
MIRL Rwy 2R-20L  
HIRL Rwy 2L-20R