

WAAS CH <b>90137</b> <b>W16B</b>	APP CRS <b>153°</b>	Rwy Ldg TDZE <b>3432</b> Apt Elev <b>3459</b>
----------------------------------------	------------------------	-----------------------------------------------------

# RNAV (GPS) Y RWY 16

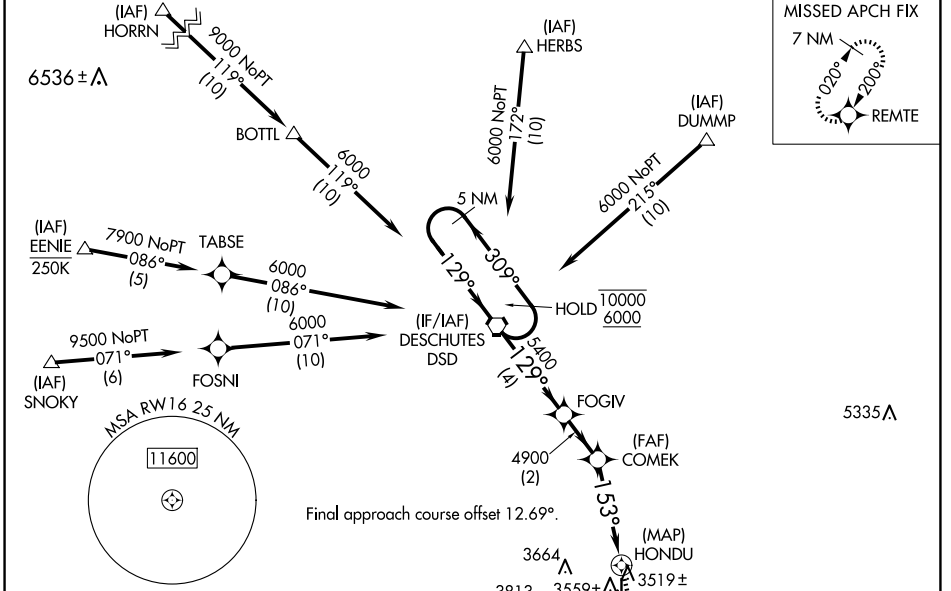
BEND MUNI (BDN)

RNP APCH - GPS.

**⚠** Rwy 16 helicopter visibility reduction below 3/4 SM NA. VDP NA when using Redmond altimeter setting. When local altimeter setting not received, use Redmond altimeter setting and increase all MDAs 100 feet and LP visibility Cats C and D 3/4 SM, LNAV visibility Cats C and D 1/2 SM, and Circling visibility Cat C 1/2 SM.

MISSED APPROACH: Climb to 7400 direct HITUP and on track 064° to REMTE and hold, continue climb-in-hold to 7400.

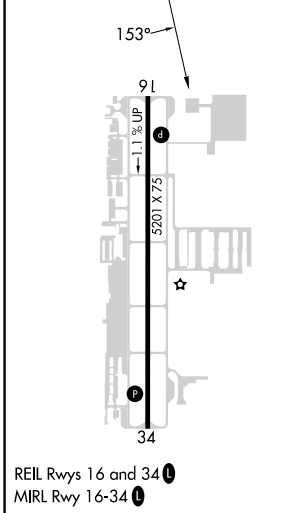
AWOS-3 <b>134.425</b>	SEATTLE CENTER <b>126.15 269.475</b>	UNICOM <b>123.0 (CTAF) 0</b>
--------------------------	-----------------------------------------	---------------------------------



NW-1, 02 OCT 2025 to 30 OCT 2025

NW-1, 02 OCT 2025 to 30 OCT 2025

ELEV <b>3459</b>	TDZE <b>3432</b>
------------------	------------------



5 NM Holding Pattern	DSD VORTAC	FOGIV	7400	HITUP	tr 064°	REMTE						
10000	6000	309°	129°	129°	5400	4900	153°	0.6 NM to HONDU	3.12° TCH 50	HONDU		
VGSI and descent angles not coincident (VGSI Angle 3.00/TCH 38).												
				4 NM		2 NM		3.3 NM		0.6 0.5		
CATEGORY	A		B		C		D					
LP MDA	3780-1 348 (400-1)											
LNAV MDA	3820-1 388 (400-1)				3820-1 1/8 388 (400-1 1/8)							
<b>C</b> CIRCLING	3960-1 501 (600-1)		3980-1 521 (600-1)		4120-1 3/4 661 (700-1 3/4)		4640-3 1181 (1200-3)					