

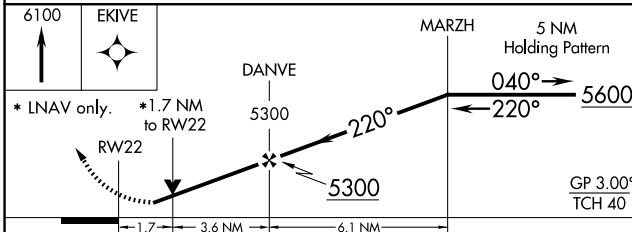
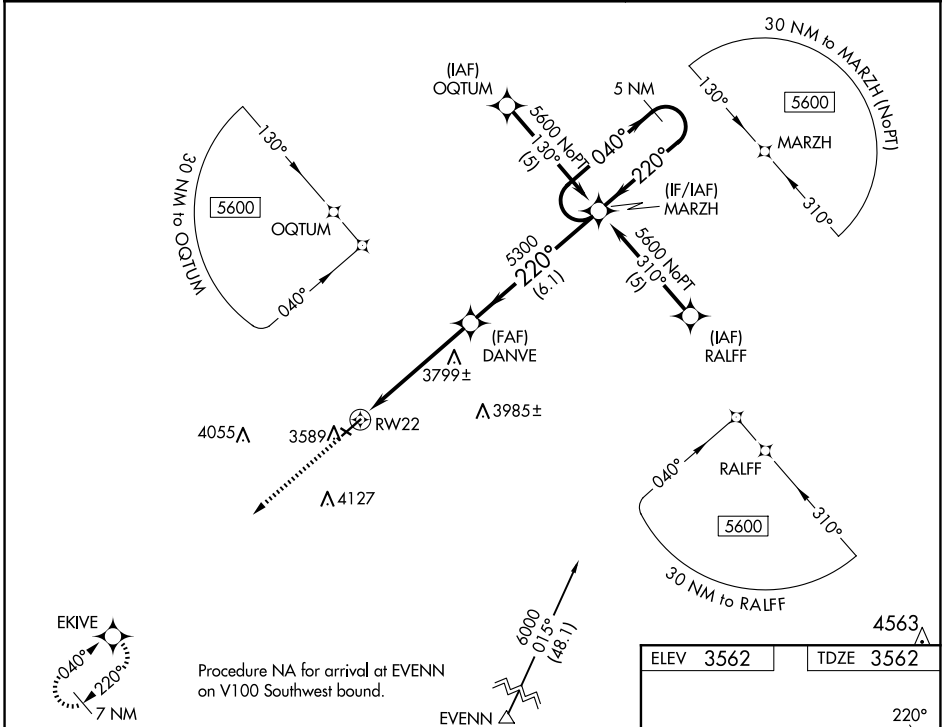
WAAS CH <b>86609</b> <b>W22A</b>	APP CRS <b>220°</b>	Rwy Ldg TDZE Apt Elev	<b>5196</b> <b>3562</b> <b>3562</b>
--	------------------------	-----------------------------	---

# RNAV (GPS) RWY 22

GORDON MUNI (GRN)

<p><b>▽</b> DME/DME RNP-0.3 NA. Rwy 22 Helicopter visibility reduction below ¼ SM NA. Baro-VNAV NA. Circling Rwy 11, 29 NA at night.</p>	<p>MISSED APPROACH: Climb to 6100 direct EKIVE and hold.</p>
--	--

AWOS-3PT <b>118.2</b>	DENVER CENTER <b>127.95 338.2</b>	UNICOM <b>122.8 (CTAF) 0</b>
--------------------------	--------------------------------------	---------------------------------



CATEGORY	A	B	C	D
LPV DA	3890-1¼	328 (400-1¼)		NA
RNAV/VNAV DA	3922-1¼	360 (400-1¼)		NA
RNAV MDA	4140-1	578 (600-1)		NA
CIRCLING	4140-1	578 (600-1)		NA

ELEV 3562	TDZE 3562
-----------	-----------

The missed approach procedure starts at 6100 ft, proceeds to EKIVE, then turns 220° and descends to 5196 ft MSL. The descent gradient is 0.4% up to 5196 ft, followed by a 0.3% up to 5284 ft, and finally a 0.4% up to 5196 ft. The final segment is 5196 x 75 ft.

REIL Rwy 4 and 22 0  
MIRL Rwy 4-22 and 11-29 0

NC-2, 02 OCT 2025 to 30 OCT 2025

NC-2, 02 OCT 2025 to 30 OCT 2025