

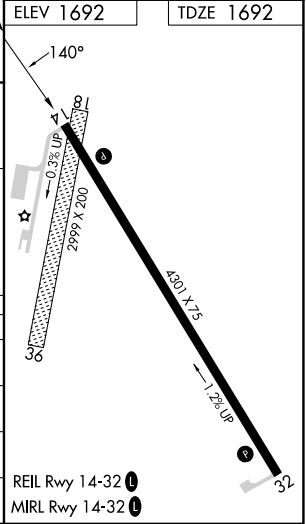
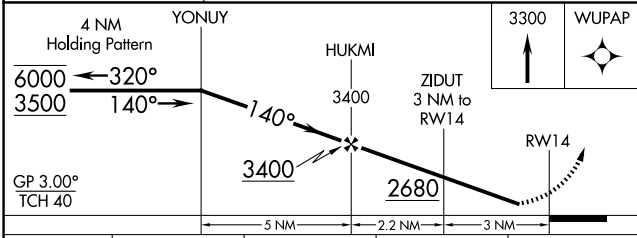
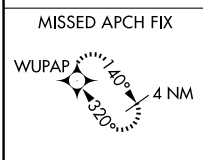
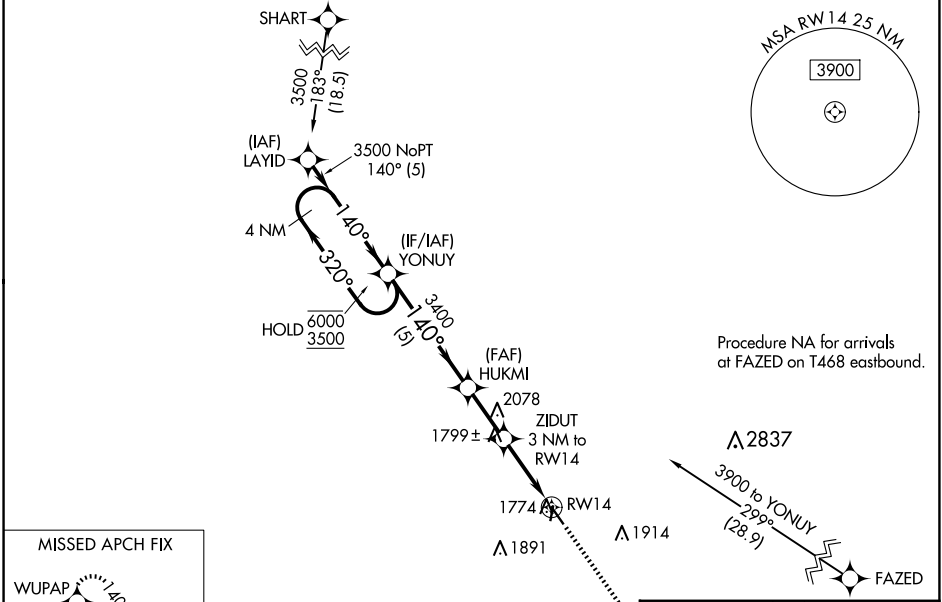
WAAS CH <b>53428</b> <b>W14A</b>	APP CRS <b>140°</b>	Rwy Idg <b>4301</b> TDZE <b>1692</b> Apt Elev <b>1692</b>
--	------------------------	---

# RNAV (GPS) RWY 14

SUPERIOR MUNI (12K)

RNP APCH - GPS.	<p>MISSED APPROACH: Climb to 3300 direct WUPAP and hold.</p>
<p>▼ Rwy 14 helicopter visibility reduction below 3/4 SM NA. Baro-VNAV NA.                  ▲ NA Circling NA to Rwy 18 and 36. Use HJH altimeter setting; when not received, use HSI altimeter setting; increase DA to 2072 feet and all MDAs 60 feet; increase Circling visibility Cat C 1/4 SM.</p>	

HJH AWOS-3 <b>118.525</b>	MINNEAPOLIS CENTER <b>119.4 278.8</b>	UNICOM <b>123.0 (CTAF) 1</b>
------------------------------	--	---------------------------------



CATEGORY	A	B	C	D
LPV DA	2026-1	334 (400-1)		NA
LNAV/VNAV DA	2026-1	334 (400-1)		NA
LNAV MDA	2140-1	448 (500-1)	2140-1 3/8 448 (500-1 3/8)	NA
CIRCLING	2360-1	668 (700-1)	2360-1 3/4 668 (700-1 3/4)	NA

NC-2, 02 OCT 2025 to 30 OCT 2025

NC-2, 02 OCT 2025 to 30 OCT 2025