

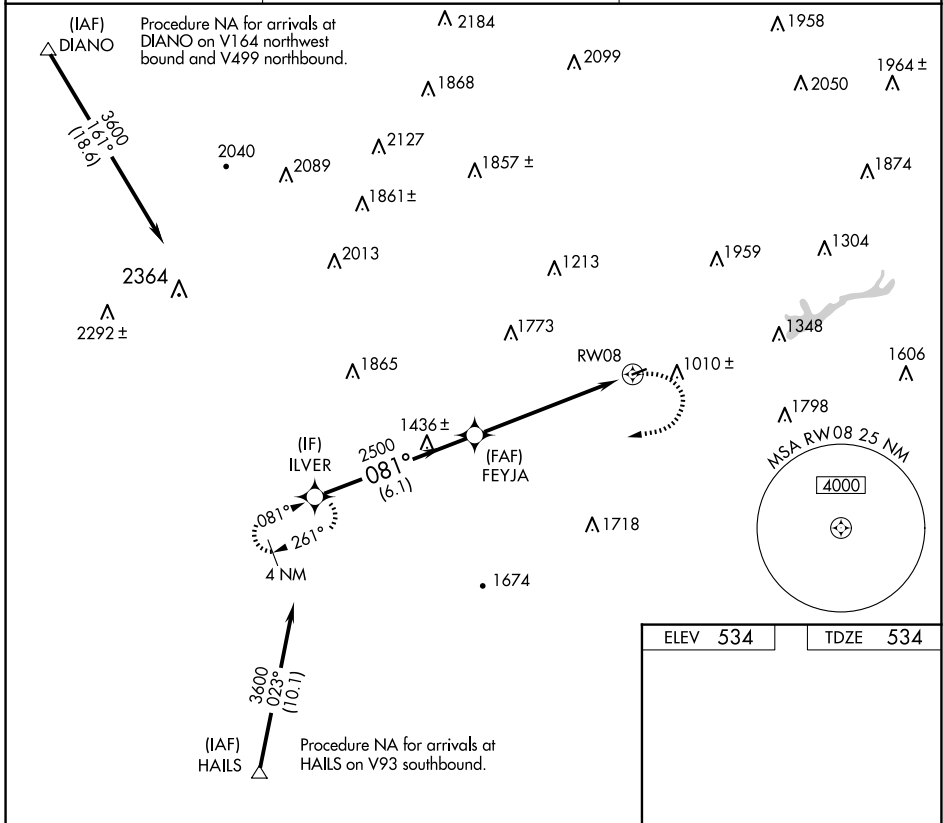
WAAS CH <b>99421</b> <b>W08A</b>	APP CRS <b>081°</b>	Rwy Ldg TDZE Apt Elev	<b>3000</b> <b>534</b> <b>534</b>
--	------------------------	-----------------------------	---

# RNAV (GPS) RWY 8

JAKE ARNER MEML (22N)

RNP APCH.	MISSED APPROACH: Climbing right turn to 3600 direct ILVER and hold.
<p>When local altimeter setting not received, use Lehigh Valley Intl altimeter setting and increase all MDA 60 feet. Rwy 8 helicopter visibility reduction below 3/4 SM NA.</p> <p>⚠ -22°C</p>	

AWOS-3PT <b>119.350</b>	ALLENTOWN APP CON <b>119.65 124.45 351.8</b>	UNICOM <b>123.05 (CTAF) 0</b>
----------------------------	---	----------------------------------



ELEV 534	TDZE 534
----------	----------

MRL Rwy 8-26 0  
REIL Rwy 8 and 26 0

NE-4, 02 OCT 2025 to 30 OCT 2025

NE-4, 02 OCT 2025 to 30 OCT 2025