

WAAS CH 86503 W09A	APP CRS 090°	Rwy Ldg TDZE Apt Elev	6500 16 17
--	------------------------	-----------------------------	---------------------------------------

RNAV (GPS) RWY 9

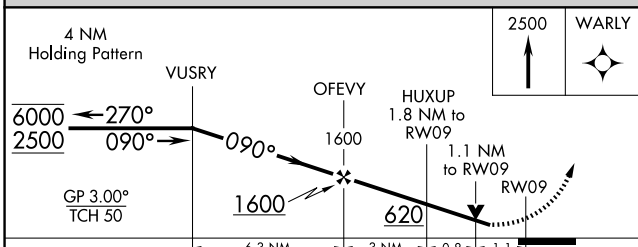
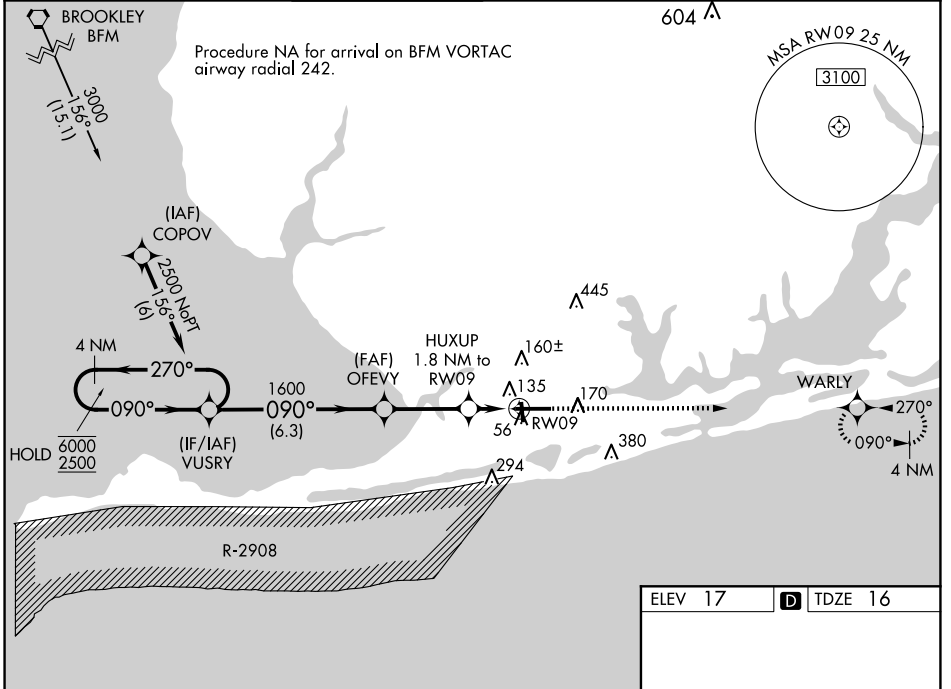
GULF SHORES INTL/JACK EDWARDS FLD (JKA)

RNP APCH - GPS.

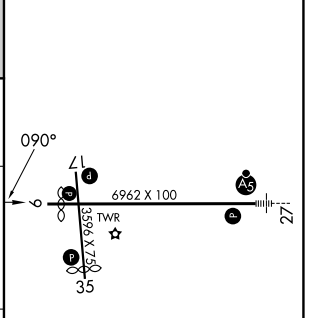
▼ Baro-VNAV and VDP NA when using Pensacola Intl altimeter setting. Rwy 09 helicopter visibility reduction below 3/4 SM NA. Circling Rwy 17, 35 NA at night. For uncompensated Baro-VNAV systems, LNAV/VNAV NA below -1.5°C or above 54°C. When local altimeter setting not received, use Pensacola Intl altimeter setting and increase LPV DA to 388 feet and all visibilities 1/2 SM. Increase LNAV/VNAV DA to 394 feet and all visibilities 1/2 SM. Increase all MDAs 80 feet and LNAV visibility Cat C/D 1/4 SM, and Circling visibility Cat C/D 1/4 SM.

MISSED APPROACH: Climb to 2500 direct WARLY and hold.

ATIS 134.525	PENSACOLA APP CON 120.65 270.8	GULF SHORES TOWER ★ 118.65 (CTAF) 0	CLNC DEL 121.7	CLNC DEL 124.55 (When twr clsd)	GND CON 121.7	UNICOM 122.7
------------------------	--	--	--------------------------	---	-------------------------	------------------------



ELEV 17	D TDZE 16
---------	------------------



CATEGORY	A	B	C	D
LPV DA		310-7/8	294 (300-7/8)	
LNAV/VNAV DA		316-7/8	300 (300-7/8)	
LNAV MDA	400-1	384 (400-1)	400-1 1/8	384 (400-1 1/8)
CIRCLING	480-1	463 (500-1)	740-2 723 (800-2)	740-2 1/4 723 (800-2 1/4)

MIRL Rwy 17-35 **0**

HIRL Rwy 9-27 **0**

SE-4, 02 OCT 2025 to 30 OCT 2025

SE-4, 02 OCT 2025 to 30 OCT 2025