

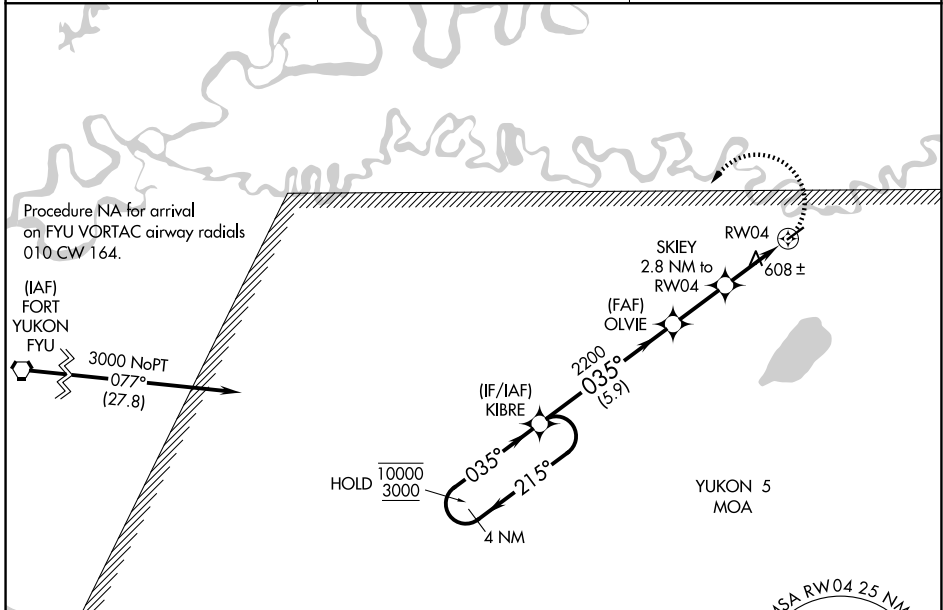
APP CRS <b>035°</b>	Rwy Ldg TDZE Apt Elev	<b>4000</b> <b>542</b> <b>549</b>
------------------------	-----------------------------	---

# RNAV (GPS) RWY 4

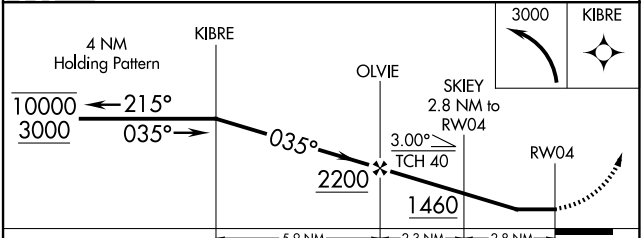
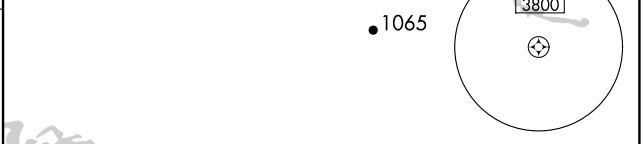
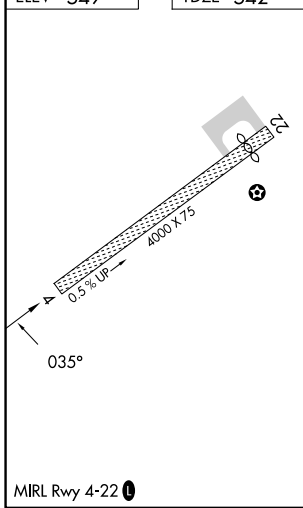
CHALKYITSIK (CIK) (PACI)

RNP APCH.	<p>Procedure NA at night.</p> <p>NA Rwy 4 helicopter visibility reduction below 1 SM NA. Use Fort Yukon altimeter setting.</p>	MISSED APPROACH: Climbing left turn to 3000 direct KIBRE and hold.
-----------	--	--

FYU/PFYU AWOS-3P <b>125.8</b>	ANCHORAGE CENTER <b>135.0 225.4</b>	CTAF <b>122.9</b>
----------------------------------	--	----------------------



ELEV 549	TDZE 542
----------	----------



CATEGORY	A	B	C	D
LNAV MDA	960-1	418 (500-1)	960-1½	418 (500-1½)
CIRCLING	1080-1 531 (600-1)	1160-1 611 (700-1)	1200-1¾ 651 (700-1¾)	1360-2¾ 811 (900-2¾)

AK, 02 OCT 2025 to 27 NOV 2025

AK, 02 OCT 2025 to 27 NOV 2025