

APP CRS	Rwy Ldg <b>10000</b>
<b>003°</b>	TDZE <b>707</b>
	Apt Elev <b>748</b>

# RNAV (RNP) Z RWY 36C

CHARLOTTE/DOUGLAS INTL (CLT)

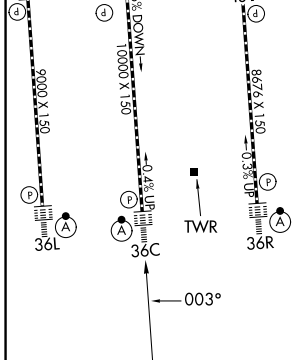
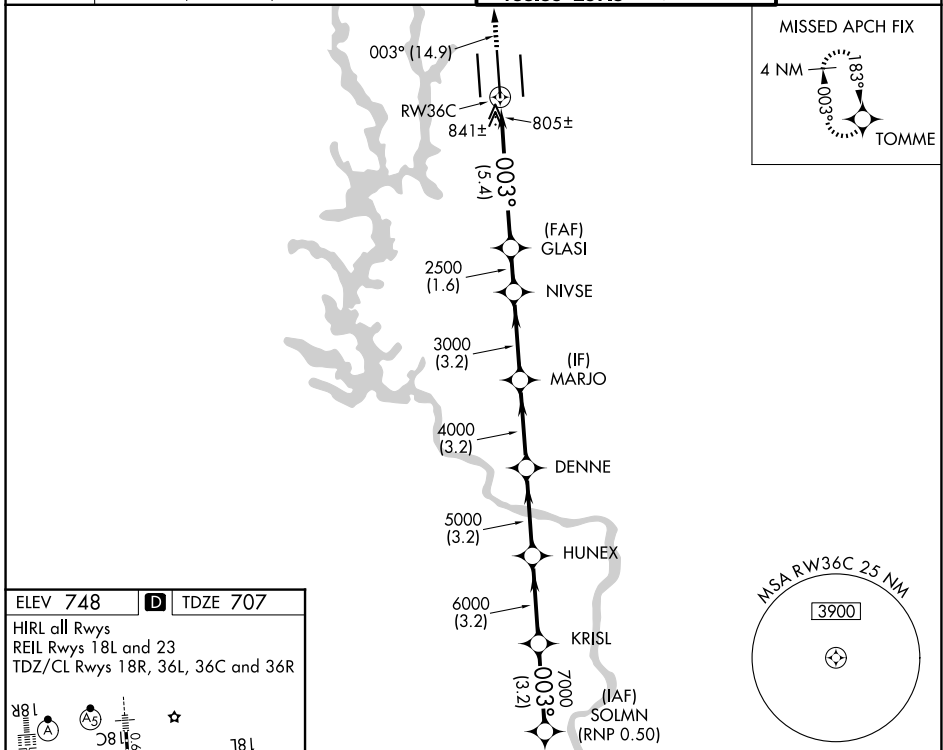
RNP AR APCH - GPS.

Simultaneous approach authorized. Use of FD or AP required during simultaneous operations. For uncompensated Baro-VNAV systems, procedure NA below -8°C or above 54°C. For inop ALS, increase RNP 0.30 visibility all Cats to 1½ SM.



MISSED APPROACH: Climb to 3000 on track 003° to TOMME and hold.

D-ATIS	CHARLOTTE APP CON	CHARLOTTE TOWER	GND CON
<b>121.15</b>	<b>128.325</b> (001°-119°) <b>120.05</b> (120°-295°) <b>134.75</b> (296°-360°)	<b>118.1 257.8</b> (Rwys 18L-36R) <b>126.4 257.8</b> (Rwy 18C-36C) <b>133.35 257.8</b> (Rwy 18R-36L)	<b>121.8 348.6</b> (W) <b>121.9 348.6</b> (E)



3000	TOMME	VGSi and RNAV glidepath not coincident (VGSi Angle 3.00/TCH 72).					SOLMNX
↑	003°	GLASI	NIVSE	MARJO	DENNE	HUNEX	KRISL
		2500	3000	4000	5000	6000	7000
		5.4 NM	1.6 NM	3.2 NM	3.2 NM	3.2 NM	3.2 NM
RW36C		2500	3000	4000	5000	6000	7000
							GP 3.05° TCH 57
CATEGORY	A	B		C		D	
RNP 0.11 DA	1134/40		427 (400-¾)				
RNP 0.30 DA	1180/50		473 (500-1)				

**AUTHORIZATION REQUIRED**

SE-2, 30 OCT 2025 to 27 NOV 2025

SE-2, 30 OCT 2025 to 27 NOV 2025