

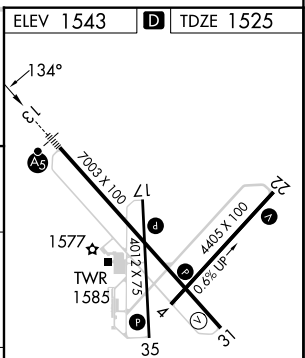
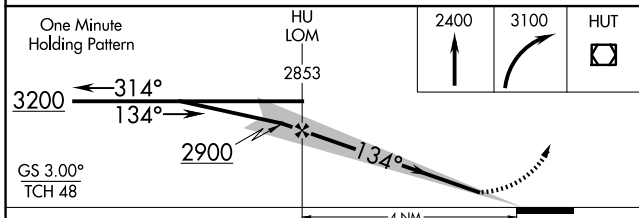
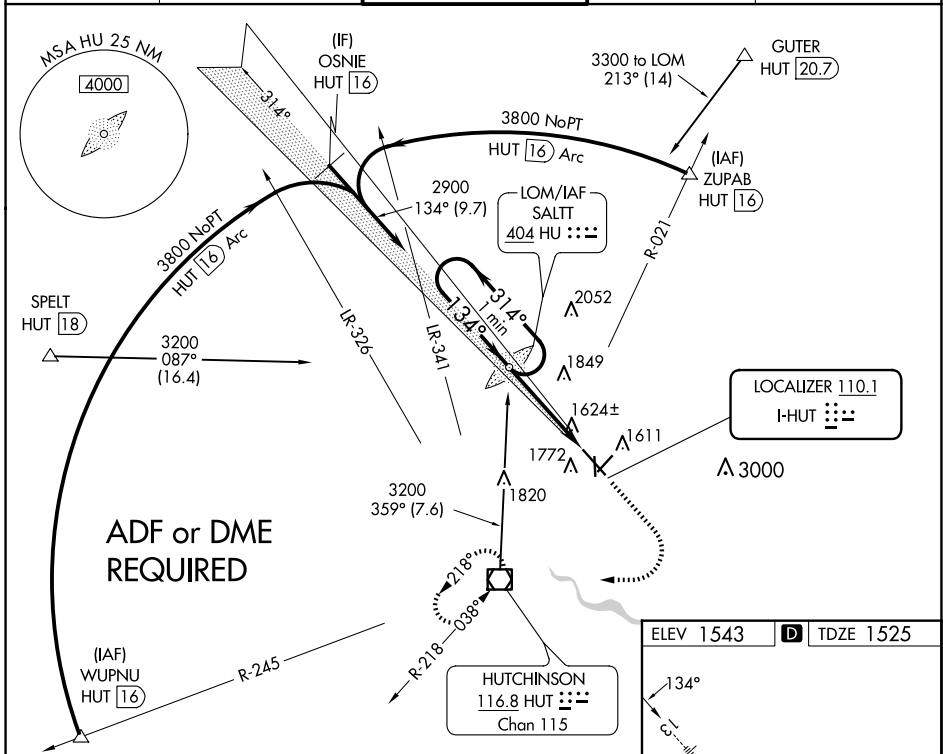
LOC I-HUT <b>110.1</b>	APP CRS <b>134°</b>	Rwy Idg <b>7003</b>
		TDZE <b>1525</b>
		Apt Elev <b>1543</b>

# ILS or LOC RWY 13

HUTCHINSON RGNL (HUT)

<p><b>⚠</b> When VGSi inop, Circling Rwy 22 NA at night. For inop ALS, increase S-LOC Rwy 13 Cat C/D visibility to RVR 5500. *RVR 1800 authorized with use of FD or AP or HUD to DA.</p>	<p>MALSR</p>	<p>MISSED APPROACH: Climb to 2400 then climbing right turn to 3100 direct HUT VOR/DME and hold.</p>
	<p><b>AS</b></p>	

ATIS <b>124.25</b>	WICHITA APP CON <b>125.5 306.2</b>	HUTCHINSON TOWER * <b>118.5 (CTAF) 363.0</b>	GND CON <b>121.9</b>	UNICOM <b>122.95</b>
-----------------------	---------------------------------------	---	-------------------------	-------------------------



CATEGORY	A	B	C	D
S-ILS 13*	1725/24 200 (200-½)			
S-LOC 13	1880/24	355 (400-½)	1880/30	355 (400-¾)
<b>C</b> CIRCLING	2080-1	537 (600-1)	2200-1¾ 657 (700-1¾)	2720-3 1177 (1200-3)

REIL Rwys 4, 22 and 31					
HIRL Rwy 13-31					
MIRL Rwys 4-22 and 17-35					
FAF to MAP 4 NM					
Knots	60	90	120	150	180
Min:Sec	4:00	2:40	2:00	1:36	1:20

NC-2, 30 OCT 2025 to 27 NOV 2025

NC-2, 30 OCT 2025 to 27 NOV 2025