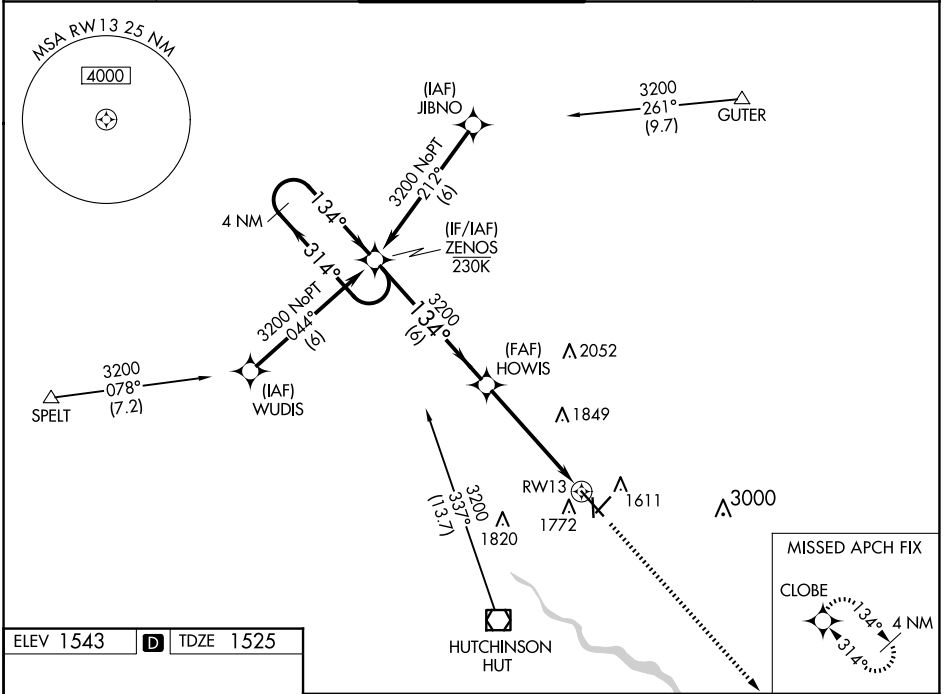


WAAS CH 50210 W13A	APP CRS 134°	Rwy Idg 7003 TDZE 1525 Apt Elev 1543
----------------------------------------	------------------------	-----------------------------------------------------------------

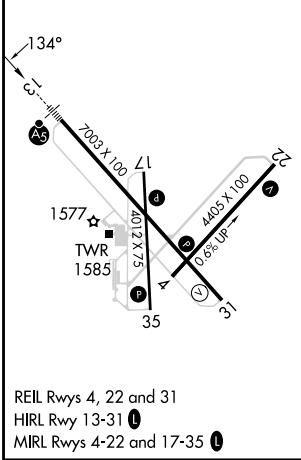
RNAV (GPS) RWY 13

HUTCHINSON RGNL (HUT)

RNP APCH-GPS		MALSR	MISSED APPROACH: Climb to 3600 direct CLOBE and hold.	
<p>⚠ Circling to Rwy 22 NA at night. For uncompensated Baro-VNAV systems, LNAV/VNAV NA below -18°C or above 54°C. # RVR 1800 authorized with use of FD or HUD to DA.</p>				
ATIS 124.25	WICHITA APP CON 125.5 306.2	HUTCHINSON TOWER ★ 118.5 (CTAF) 363.0	GND CON 121.9	UNICOM 122.95



ELEV 1543	D	TDZE 1525
-----------	----------	-----------



4 NM Holding Pattern		ZENOS	HOWIS	3600	CLOBE
3200 ← 314°		3200 → 134°	3200	*1.7 NM to RWY 13	*LNAV only
GP 3.00°		TCH 48			
6 NM	3.4 NM	1.7 NM			
CATEGORY	A	B	C	D	
LPV DA#	1725/24		200 (200-½)		
LNAV/VNAV DA	1932/40		407 (400-¾)		
LNAV MDA	2120/24 595 (600-½)		2120-1¼ 595 (600-1¼)		
C CIRCLING	2120-1 577 (600-1)		2200-1¾ 657 (700-1¾)		2720-3 1177 (1200-3)

HUTCHINSON, KANSAS
Amdt 1A 08SEP22

38°04'N-97°52'W

HUTCHINSON RGNL (HUT) RNAV (GPS) RWY 13

NC-2, 30 OCT 2025 to 27 NOV 2025

NC-2, 30 OCT 2025 to 27 NOV 2025