

APP CRS <b>121°</b>	Rwy Ldg <b>8650</b>
	TDZE <b>53</b>
	Apt Elev <b>60</b>

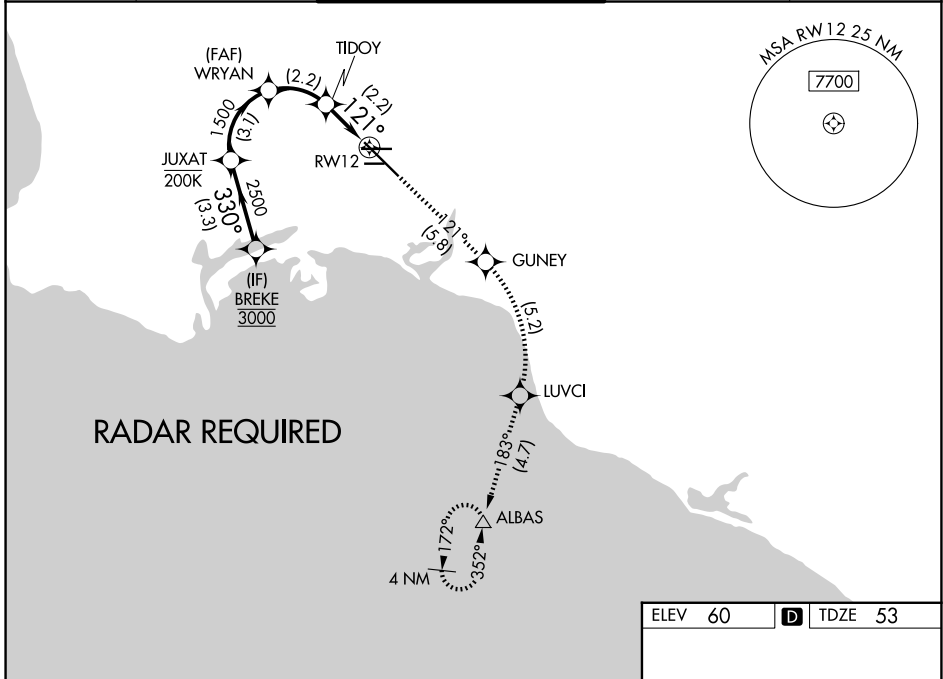
# RNAV (RNP) RWY 12

LONG BEACH (DAUGHERTY FLD) (LGB)

**⚠** For uncompensated Baro-VNAV systems, procedure NA below 4°C (40°F) or above 54°C (130°F). RF required. GPS required.

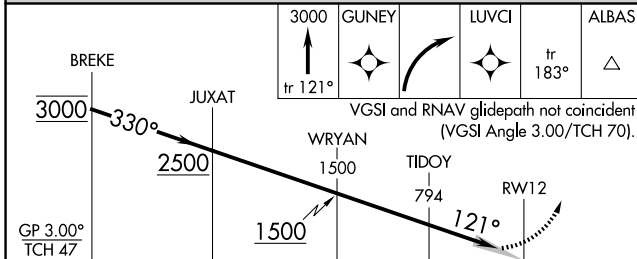
MISSED APPROACH: Climb to 3000 on track 121° to GUNEY, right turn to LUVCI, and on track 183° to ALBAS and hold.

ATIS <b>127.75</b>	SOCAL APP CON <b>125.35 316.125</b>	LONG BEACH TOWER ★ <b>120.5 257.6 (12)</b> <b>119.4 (CTAF) 0 257.6 (30)</b>	GND CON <b>133.0 257.6</b>	UNICOM <b>122.95</b>
-----------------------	--	---	-------------------------------	-------------------------



SW-3, 30 OCT 2025 to 27 NOV 2025

SW-3, 30 OCT 2025 to 27 NOV 2025



CATEGORY	A	B	C	D
RNP 0.15 DA		414-1¼	361 (400-1¼)	
RNP 0.30 DA		485-1½	432 (500-1½)	

**AUTHORIZATION REQUIRED**

