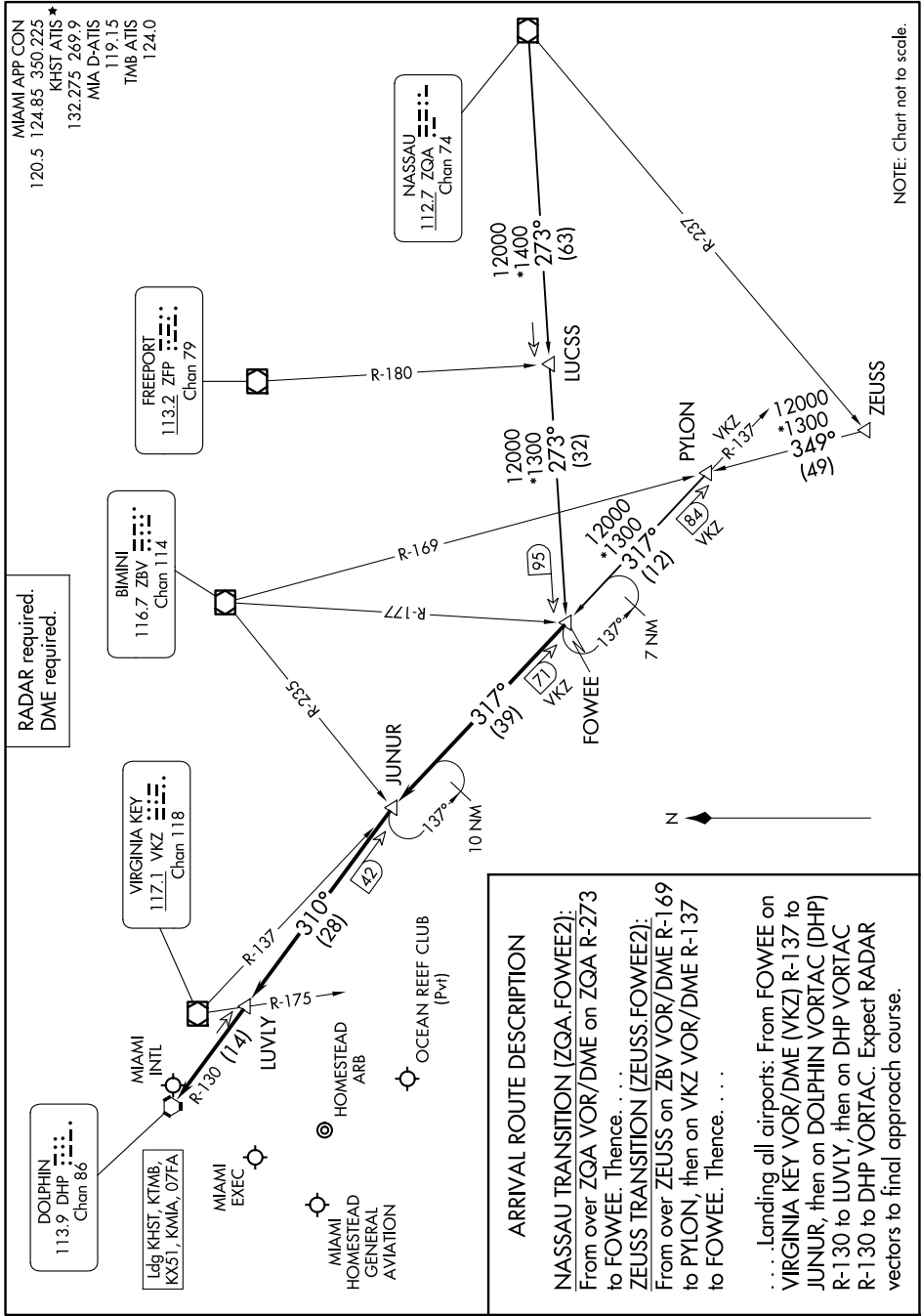


FOWEE TWO ARRIVAL



SE-3, 30 OCT 2025 to 27 NOV 2025

SE-3, 30 OCT 2025 to 27 NOV 2025

FOWEE TWO ARRIVAL

ARRIVAL ROUTE DESCRIPTION

NASSAU TRANSITION [ZQA.FOWEE2]:
From over ZQA VOR/DME on ZQA R-273 to FOWEE. Thence. . . .

ZEISS TRANSITION [ZEUSS.FOWEE2]:
From over ZEISS on ZBV VOR/DME R-169 to PYLON, then on VKZ VOR/DME R-137 to FOWEE. Thence. . . .

. . . . Landing all airports: From FOWEE on VIRGINIA KEY VOR/DME (VKZ) R-137 to JUNIOR, then on DOLPHIN VORTAC (DHP) R-130 to LUVLY, then on DHP VORTAC R-130 to DHP VORTAC. Expect RADAR vectors to final approach course.

RADAR required.
DME required.

MIAMI APP CON
120.5 124.85 350 225
KHST/ATIS *
132.275 269.9
MIA D-ATIS
119.15
TMB/ATIS
124.0

FREEPORT
113.2 ZFP
Chan 79

BIMINI
116.7 ZBV
Chan 114

VIRGINIA KEY
117.1 VKZ
Chan 118

DOLPHIN
113.9 DHP
Chan 86

Ldg KHST, KIMB,
KX51, KMIA, 07FA

MIAMI EXEC

MIAMI
HOMESTEAD
GENERAL
AVIATION

HOMESTEAD
ARB

OCEAN REEF CLUB
(Pvt)

NASSAU
112.7 ZQA
Chan 74

NOTE: Chart not to scale.