

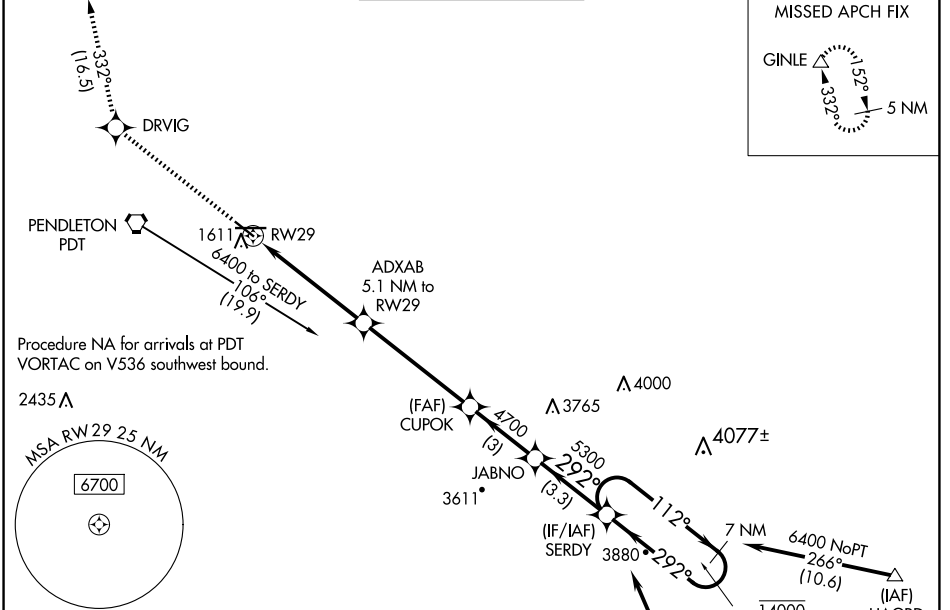
WAAS CH <b>42513</b> W <b>29A</b>	APP CRS <b>292°</b>	Rwy Idg <b>4808</b> TDZE <b>1494</b> Apt Elev <b>1494</b>
---	------------------------	---

# RNAV (GPS) RWY 29

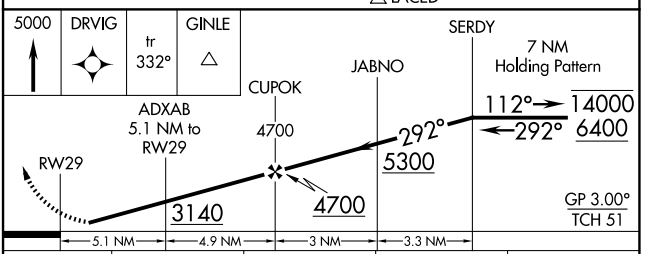
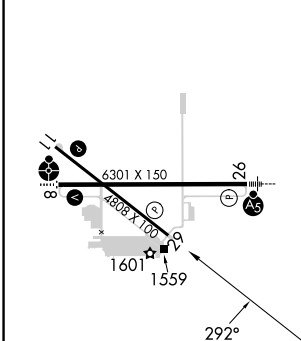
EASTERN OREGON RGNL AT PENDLETON (PDT)

RNP APCH - GPS.	<p><b>⚠</b> Rwy 29 helicopter visibility reduction below 1 SM NA. <b>⚠</b> Baro-VNAV NA. Straight-in Rwy 29 NA at night, Circling Rwy 8, 29 NA at night.</p>	MISSED APPROACH: Climb to 5000 direct DRVIG and on track 332° to GINLE and hold.
-----------------	--	--

ASOS <b>118.325</b>	SPOKANE APP CON * <b>133.15 379.15</b>	PENDLETON TOWER * <b>119.7 (CTAF) 0 257.8</b>	GND CON <b>121.9 257.8</b>	UNICOM <b>122.95</b>
------------------------	---	--	-------------------------------	-------------------------



ELEV 1494	<b>D</b>	TDZE 1494
-----------	----------	-----------



CATEGORY	A	B	C	D
LPV DA	1769-1		275 (300-1)	
LNAV/ VNAV DA	1800-1		306 (400-1)	
LNAV MDA	1880-1	386 (400-1)	1880-1½	386 (400-1½)
<b>C</b> CIRCLING	1920-1 426 (500-1)	1960-1 466 (500-1)	1980-1½ 486 (500-1½)	2200-2¼ 706 (800-2¼)

REIL Rws 11 and 29 **Ⓛ**  
MIRL Rwy 11-29 **Ⓛ**  
HIRL Rwy 8-26 **Ⓛ**

NW-1, 30 OCT 2025 to 27 NOV 2025

NW-1, 30 OCT 2025 to 27 NOV 2025