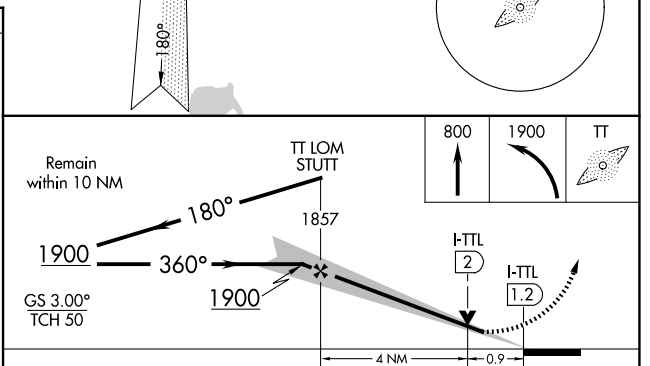
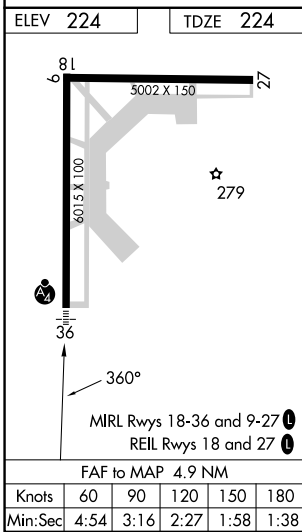
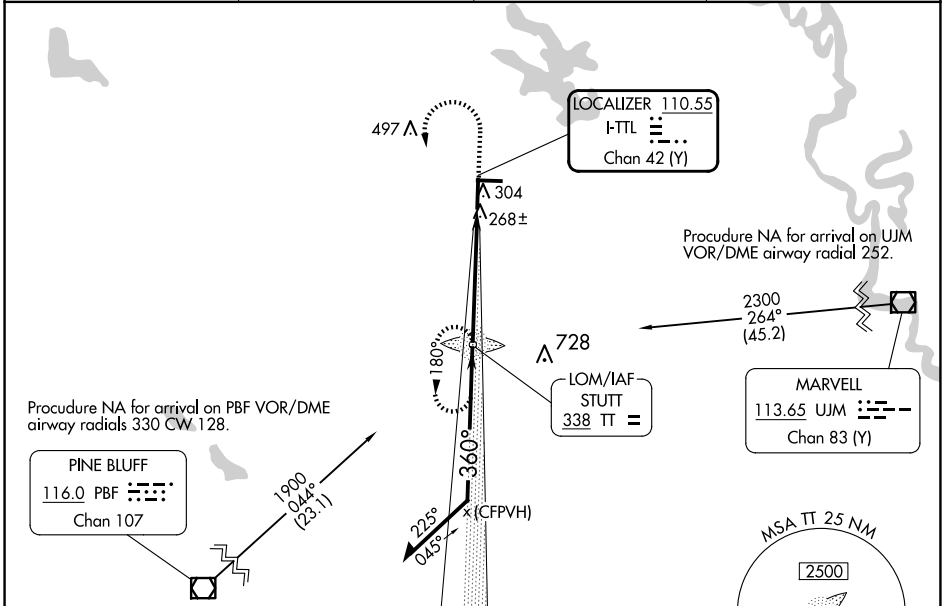


| | | | |
|---|------------------------|-----------------------------|---|
| LOC/DME I-TTL 110.55 Chan 42 (Y) | APP CRS 360° | Rwy Idg TDZE Apt Elev | 6015 224 224 |
|---|------------------------|-----------------------------|---|

ILS or LOC RWY 36
STUTTGART MUNI CARL HUMPHREY FLD (SGT)

| | | | |
|--|--|----------------------------|---|
| ADF required. | | MALSF | MISSED APPROACH: Climb to 800 then climbing left turn to 1900 direct STUTT LOM and hold. |
| Rwy 36 helicopter visibility reduction below 3/4 SM NA. Inop table does not apply to S-ILS all Cats. For Inop ALS increase S-LOC Cat C visibility to 7/8 SM. | | AWOS-3PT 119,025 | LITTLE ROCK APP CON 135.4 353.6 |
| | | CLNC DEL 123.7 | UNICOM 122.8 (CTAF) |



| CATEGORY | A | B | C | D |
|----------|-------------|-------------|-----------------|-------------|
| S-ILS 36 | 424-3/4 | | 200 (200-3/4) | |
| S-LOC 36 | 520-3/4 | | 296 (300-3/4) | |
| CIRCLING | 660-1 | 680-1 | 760-1 1/2 | 860-2 |
| | 436 (500-1) | 456 (500-1) | 536 (600-1 1/2) | 636 (700-2) |

SC-1, 30 OCT 2025 to 27 NOV 2025

SC-1, 30 OCT 2025 to 27 NOV 2025