

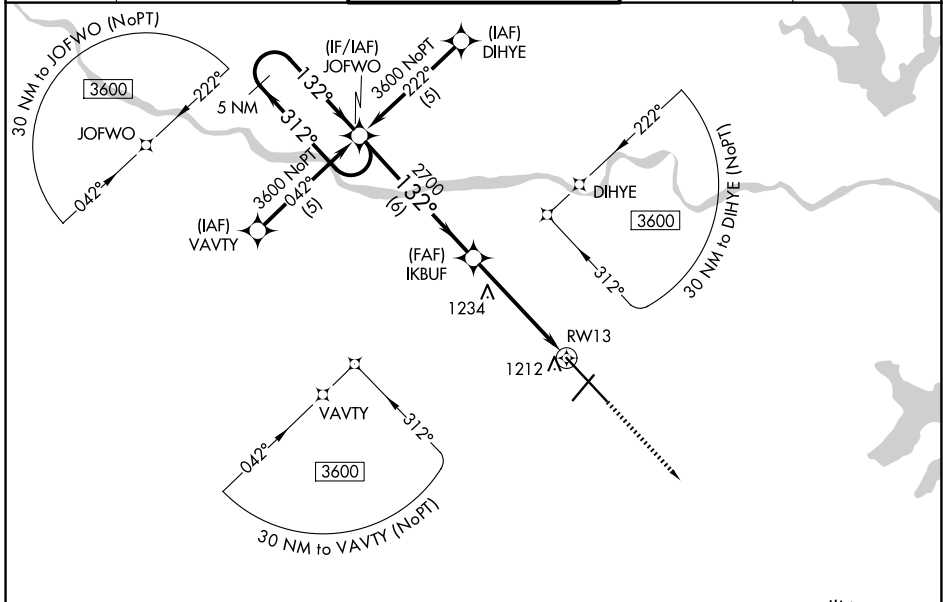
WAAS CH 66100 W13A	APP CRS 132°	Rwy Ldg 12803 TDZE 1066 Apt Elev 1078
--	------------------------	--

RNAV (GPS) RWY 13

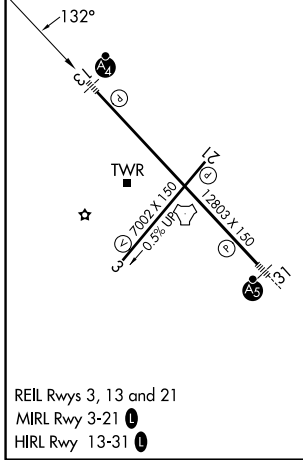
TOPEKA RGNL (F0E)

RNP APCH.	MALSF	MISSED APPROACH: Climb to 3000 direct ERJAG and hold.
<p>When local altimeter setting not received, use Philip Billard Muni altimeter setting and increase all DA/MDA 60 feet, increase LPV all Cats visibility 1/8 SM, LNAV Cat C visibility 1/8 SM and Circling Cat D visibility 1/4 SM. Baro-VNAV and VDP NA when using Philip Billard Muni altimeter setting. For uncompensated Baro-VNAV systems, LNAV/VNAV NA below -17°C or above 54°C.</p>		

ATIS 128.25	KANSAS CITY CENTER 123.8 343.7	FORBES TOWER* 120.8 (CTAF) 340.2	GND CON 118.425 275.8	UNICOM 122.95
-----------------------	--	--	---------------------------------	-------------------------



ELEV 1078	D	TDZE 1066
-----------	----------	-----------



<p>5 NM Holding Pattern</p> <p>3600 ← 312° → 132°</p> <p>GP 3.00° TCH 52</p>	<p>JOFWO</p> <p>IKBUF</p> <p>RWY 13</p> <p>ERJAG</p> <p>*1.3 NM to RWY 13 *LNAV only.</p>																									
<table border="1"> <thead> <tr> <th>CATEGORY</th> <th>A</th> <th>B</th> <th>C</th> <th>D</th> </tr> </thead> <tbody> <tr> <td>LPV DA</td> <td></td> <td>1316-3/4</td> <td>250 (300-3/4)</td> <td></td> </tr> <tr> <td>LNAV/VNAV DA</td> <td></td> <td>1506-1 1/2</td> <td>440 (500-1 1/2)</td> <td></td> </tr> <tr> <td>LNAV MDA</td> <td>1540-1</td> <td>474 (500-1)</td> <td>1540-1 3/8 474 (500-1 3/8)</td> <td>1540-1 1/2 474 (500-1 1/2)</td> </tr> <tr> <td>CIRCLING</td> <td>1540-1 462 (500-1)</td> <td>1580-1 502 (600-1)</td> <td>1580-1 1/2 502 (600-1 1/2)</td> <td>1700-2 622 (700-2)</td> </tr> </tbody> </table>	CATEGORY	A	B	C	D	LPV DA		1316-3/4	250 (300-3/4)		LNAV/VNAV DA		1506-1 1/2	440 (500-1 1/2)		LNAV MDA	1540-1	474 (500-1)	1540-1 3/8 474 (500-1 3/8)	1540-1 1/2 474 (500-1 1/2)	CIRCLING	1540-1 462 (500-1)	1580-1 502 (600-1)	1580-1 1/2 502 (600-1 1/2)	1700-2 622 (700-2)	<p>6 NM</p> <p>3.6 NM</p> <p>1.3 NM</p>
CATEGORY	A	B	C	D																						
LPV DA		1316-3/4	250 (300-3/4)																							
LNAV/VNAV DA		1506-1 1/2	440 (500-1 1/2)																							
LNAV MDA	1540-1	474 (500-1)	1540-1 3/8 474 (500-1 3/8)	1540-1 1/2 474 (500-1 1/2)																						
CIRCLING	1540-1 462 (500-1)	1580-1 502 (600-1)	1580-1 1/2 502 (600-1 1/2)	1700-2 622 (700-2)																						

NC-2, 30 OCT 2025 to 27 NOV 2025

NC-2, 30 OCT 2025 to 27 NOV 2025