

TACAN FOE Chan 53 (111.6)	APP CRS 138°	Rwy Ldg 12803 TDZE 1066 Apt Elev 1078
---	------------------------	--

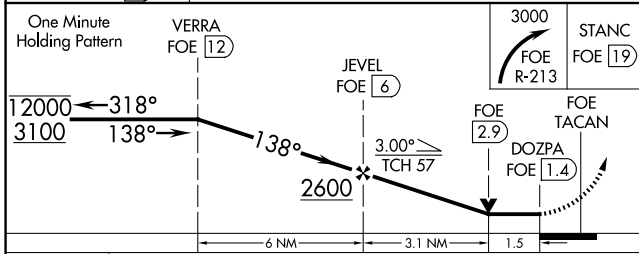
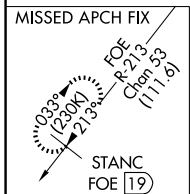
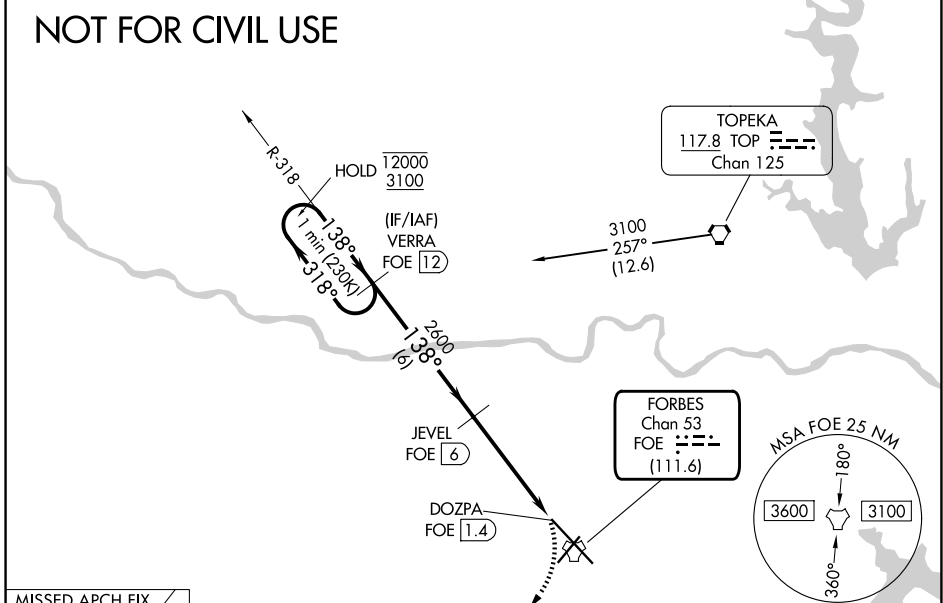
TACAN RWY 13

TOPEKA RGNL (FOE)

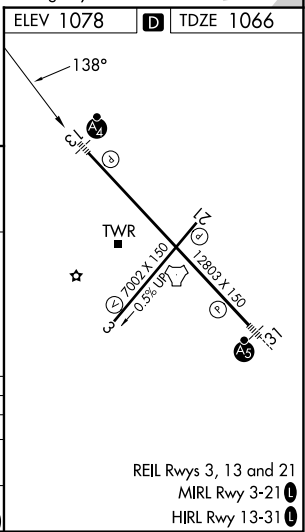
	MALSF	MISSED APPROACH: Climbing right turn to 3000 on FOE TACAN R-213 to STANC/FOE 19 DME and hold.

ATIS 128.25	KANSAS CITY CENTER 123.8 343.7	FORBES TOWER* 120.8 (CTAF) 340.2	GND CON 118.425 275.8	UNICOM 122.95
-----------------------	--	--	---------------------------------	-------------------------

NOT FOR CIVIL USE



Emergency Safe Altitude 100 NM 3600



CATEGORY	A	B	C	D	E
S-13	1600-1	534 (600-1)	1600-1½	534 (600-1½)	
CIRCLING	1600-1	522 (600-1)	1600-1½ 522 (600-1½)	1700-2 622 (700-2)	1720-2¼ 642 (700-2¼)

REIL Rws 3, 13 and 21
 MIRL Rwy 3-21
 HIRL Rwy 13-31

NC-2, 30 OCT 2025 to 27 NOV 2025

NC-2, 30 OCT 2025 to 27 NOV 2025