

TACAN FOE Chan 53 (111.6)	APP CRS 304°	Rwy Ldg TDZE 1037 Apt Elev 1078
---	------------------------	---

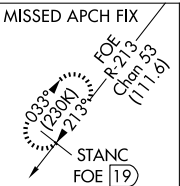
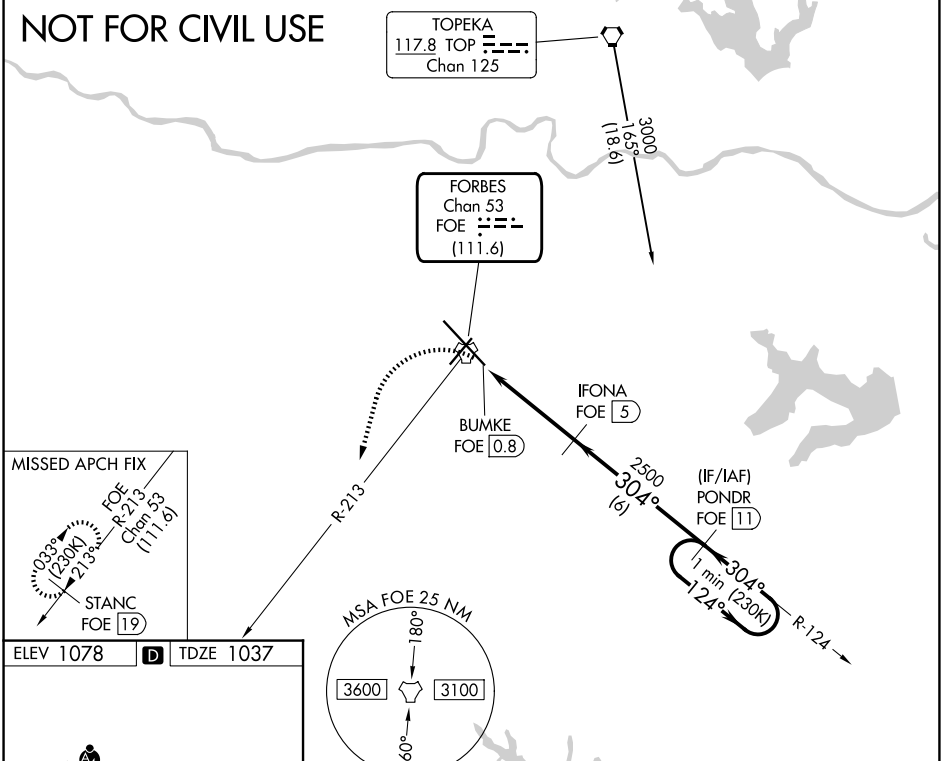
TACAN RWY 31

TOPEKA RGNL (F O E)

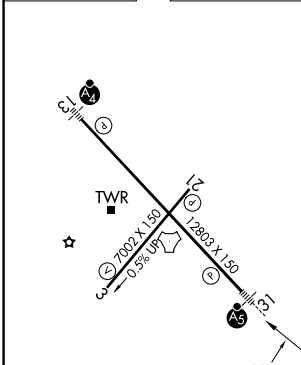
NA For inoperative ALS, increase S-31 Cats C/D/E visibility to 1 3/8 SM.	MALSR 	MISSED APPROACH: Climbing left turn to 3000 heading 190° and on FOE TACAN R-213 to STANC/19 DME and hold.
---	-----------	---

ATIS 128.25	KANSAS CITY CENTER 123.8 343.7	FORBES TOWER* 120.8 (CTAF) 340.2	GND CON 118.425 275.8	UNICOM 122.95
-----------------------	--	--	---------------------------------	-------------------------

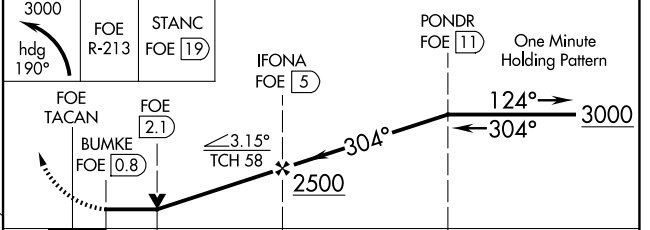
NOT FOR CIVIL USE



ELEV 1078	D	TDZE 1037
-----------	----------	-----------



Emergency Safe Altitude 100 NM 3600



CATEGORY	A	B	C	D	E
S-31	1500/24	463 (500-1/2)	1500/50	463 (500-1)	
CIRCLING	1520-1 442 (500-1)	1580-1 502 (600-1)	1580-1 1/2 502 (600-1 1/2)	1700-2 622 (700-2)	1720-2 1/4 642 (700-2 1/4)

NC-2, 30 OCT 2025 to 27 NOV 2025

NC-2, 30 OCT 2025 to 27 NOV 2025