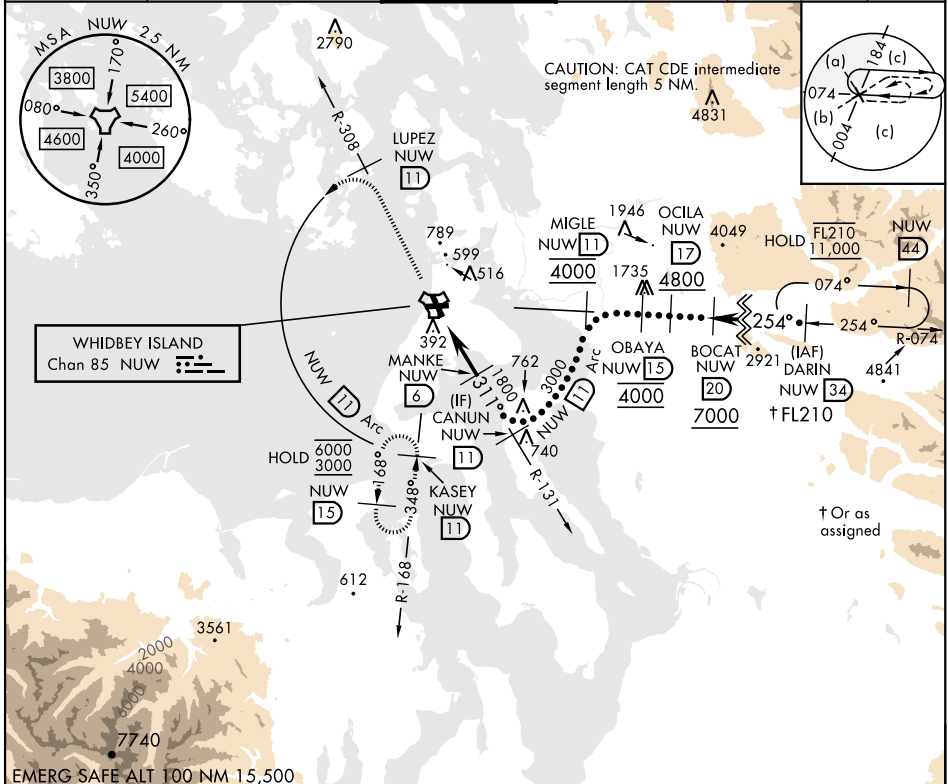


HI-TACAN Z RWY 32

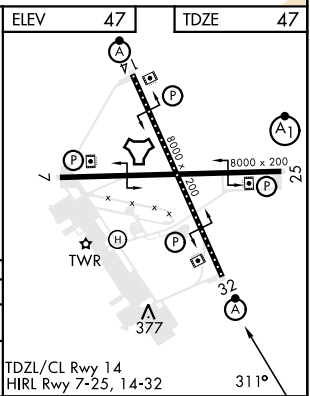
TACAN Chan 85	NUW	APCH CRS 311°	Rwy ldg TDZE Arpt Elev 8000 47 47	[USN]	WHIDBEY ISLAND NAS (AULT FLD) (KNUW)
-------------------------	-----	-------------------------	---	-------	--------------------------------------

▼ *When ALS inop, increase CAT CDE vis to 1 3/4 miles.
 ⚠ ALSF-2
 ⚠ MISSED APPROACH: Climb to 3000 via NUW TACAN R-308 to LUPEZ, then arc W of NUW via 11 DME Arc to KASEY and hold.

ATIS 134.15 281.5	WHIDBEY APP CON 120.7 270.8 (EAST) 118.2 285.65 (WEST)	WHIDBEY TOWER 127.9 340.2	GND CON 121.75 336.4	CLNC DEL 135.1 379.9	ASR/PAR
-----------------------------	--	-------------------------------------	--------------------------------	--------------------------------	---------



3000 NUW R-308	LUPEZ NUW 11	NUW Arc 11	
NUW TACAN	NUW NAVOE NUW 1.8	NUW 2.8	
4.2 NM		MANKE NUW 6	
3.20° TCH 38		3000	
CATEGORY	C	D	E
S-32*	680-1 3/8	633 (700-1%)	
CIRCLING	860-2 1/2 813 (900-2 1/2)	900-2 3/4 853 (900-234)	1200-3 1153 (1200-3)



HI-TACAN Z RWY 32

NW-1, 30 OCT 2025 to 27 NOV 2025

NW-1, 30 OCT 2025 to 27 NOV 2025