

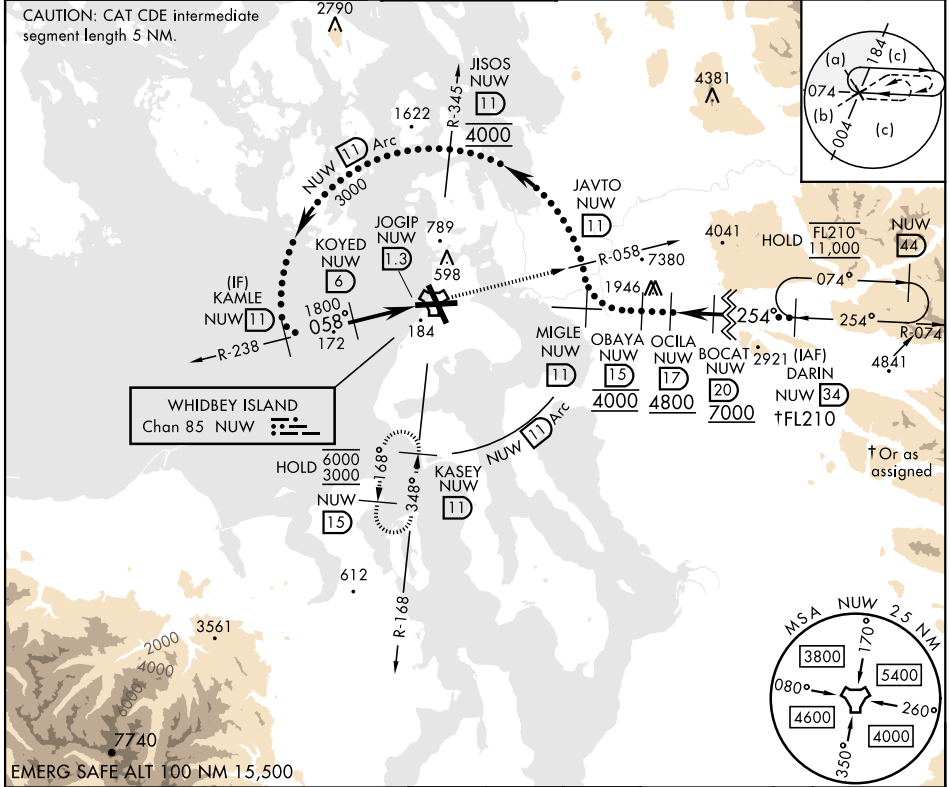
OAK HARBOR, WASHINGTON

HI-TACAN Z RWY 7

TACAN Chan 85	APCH CRS 058°	Rwy Idg TDZE Arpt Elev	8000 25 47	[USN]	WHIDBEY ISLAND NAS (AULT FLD) (KNUW)
-------------------------	-------------------------	------------------------------	---------------------------------------	-------	--------------------------------------

▼ MISSED APPROACH: Climb to 3000 via NUW TACAN R-058 to JAVTO, then arc SE of NUW via 11 DME Arc to KASEY and hold.

ATIS 134.15 281.5	WHIDBEY APP CON 120.7 270.8 (EAST) 118.2 285.65 (WEST)	WHIDBEY TOWER 127.9 340.2	GND CON 121.75 336.4	CLNC DEL 135.1 379.9	ASR/PAR
-----------------------------	--	-------------------------------------	--------------------------------	--------------------------------	---------



NW-1, 30 OCT 2025 to 27 NOV 2025

NW-1, 30 OCT 2025 to 27 NOV 2025

		3000 ↑ NUW R-058	JAVTO NUW (11)	NUW (11) Arc	ELEV 47	TDZE 25	
CATEGORY	C	D	E				
S-7	440/60	415	(400-1½)				
C CIRCLING	860-2½ 813 (900-2½)	900-2¾ 853 (900-2¾)	1200-3 1153 (1200-3)			TDZL/CL Rwy 14 HIRL Rwy 7-25, 14-32	

OAK HARBOR, WASHINGTON 48°21'N-122°39'W WHIDBEY ISLAND NAS (AULT FLD) (KNUW)

Amdt 4 31OCT24

HI-TACAN Z RWY 7