

VOR/DME MDO 115.3 Chan 100	APP CRS 022°	Rwy Ldg 3158 TDZE 100 Apt Elev 100
--	------------------------	---

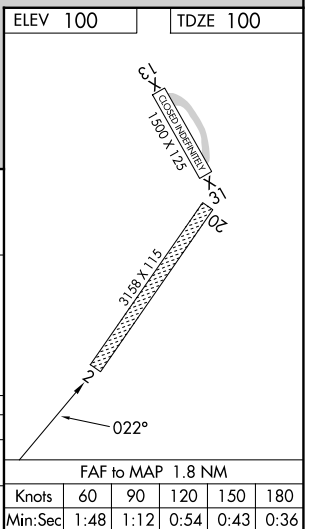
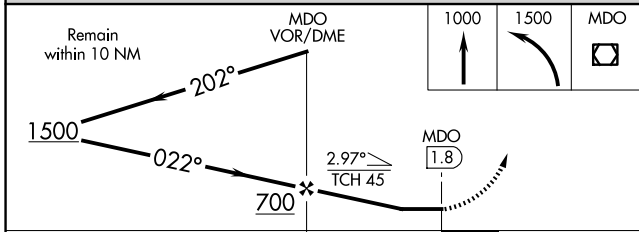
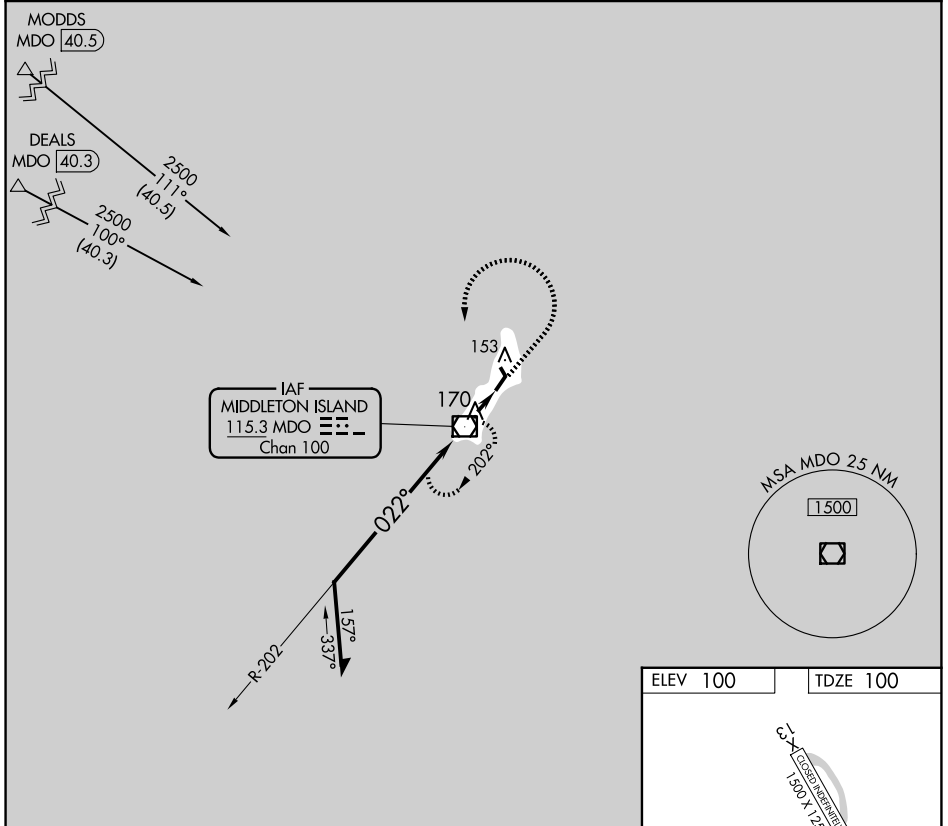
VOR RWY 2

MIDDLETON ISLAND (MDO) (PAMD)

▼ When local altimeter setting not received, procedure NA.
Procedure NA at night.
Helicopter visibility reduction below 1 SM NA.

MISSED APPROACH: Climb to 1000 then climbing left turn to 1500 direct MDO VOR/DME and hold.

AWOS-3P 135.725	ANCHORAGE CENTER 133.6 269.4	JUNEAU RADIO 122.05	CTAF 122.9
---------------------------	--	-------------------------------	----------------------



CATEGORY	A	B	C	D
S-2	560-1	460 (500-1)	560-1 ³ / ₈ 460 (500-1 ³ / ₈)	NA
CIRCLING	600-1	500 (500-1)	600-1 ¹ / ₂ 500 (500-1 ¹ / ₂)	NA

AK, 02 OCT 2025 to 27 NOV 2025

AK, 02 OCT 2025 to 27 NOV 2025