

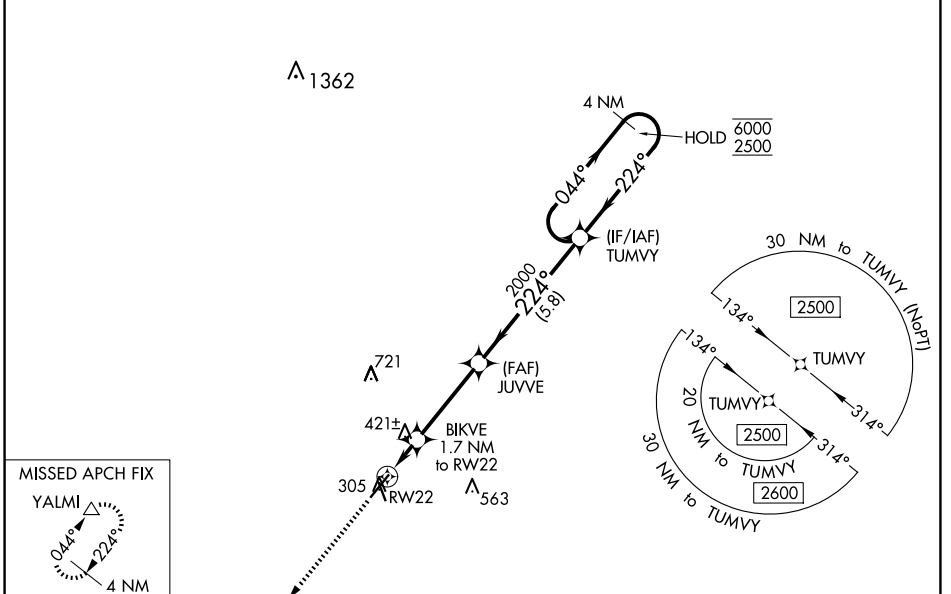
WAAS CH <b>93803</b> <b>W22A</b>	APP CRS <b>224°</b>	Rwy Idg TDZE Apt Elev	<b>5628</b> <b>296</b> <b>297</b>
--	------------------------	-----------------------------	---

# RNAV (GPS) RWY 22

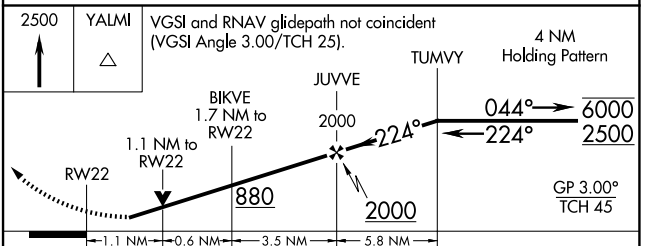
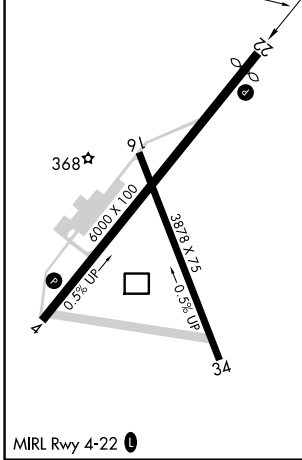
MOULTRIE MUNI (MGR)

RNP APCH - GPS.		MISSED APPROACH: Climb to 2500 direct YALMI and hold.
<p><b>▼</b> Rwy 22 helicopter visibility reduction below 3/4 SM NA. Circling Rwy 16, 34 NA at night. <b>▲</b> For uncompensated Baro-VNAV systems, LNAV/VNAV NA below -15°C or above 54°C.</p>		

AWOS-3PT <b>118.925</b>	VALDOSTA APP CON ★ <b>126.6 285.6</b>	UNICOM <b>122.8 (CTAF) 0</b>
----------------------------	--	---------------------------------



ELEV 297	<b>D</b>	TDZE 296
----------	----------	----------



CATEGORY	A	B	C	D
LPV DA		600-1	304 (400-1)	
LNAV/VNAV DA		569-1	273 (300-1)	
LNAV MDA	680-1	384 (400-1)	680-1 1/8	384 (400-1 1/8)
<b>C</b> CIRCLING	720-1 423 (500-1)	760-1 463 (500-1)	860-1 1/2 563 (600-1 1/2)	1080-2 1/2 783 (800-2 1/2)

SE-4, 30 OCT 2025 to 27 NOV 2025

SE-4, 30 OCT 2025 to 27 NOV 2025