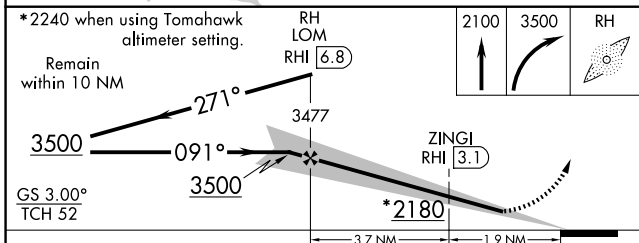
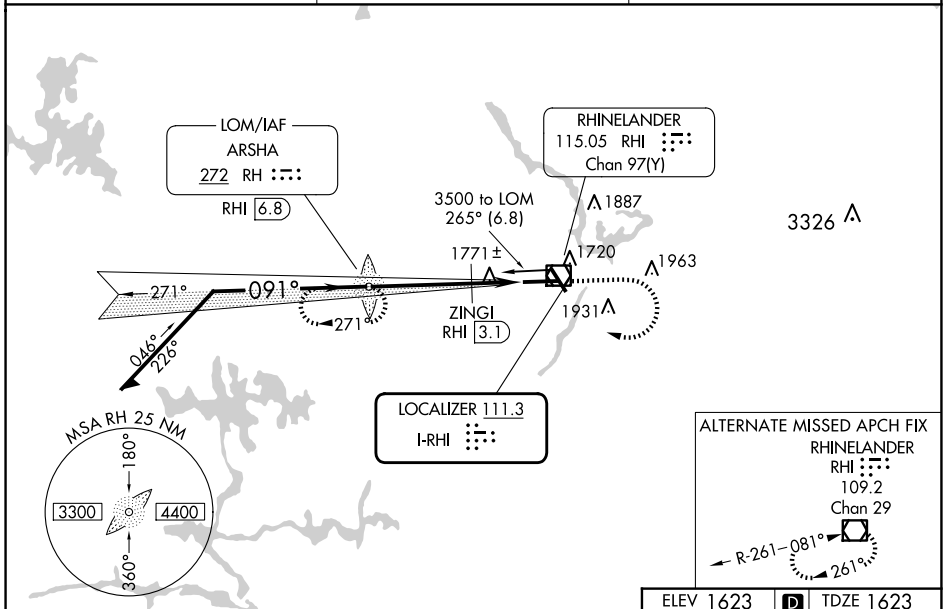


LOC I-RHI 111.3	APP CRS 091°	Rwy Ldg TDZE Apt Elev	6799 1623 1623
---------------------------	------------------------	-----------------------------	---

ILS or LOC RWY 9

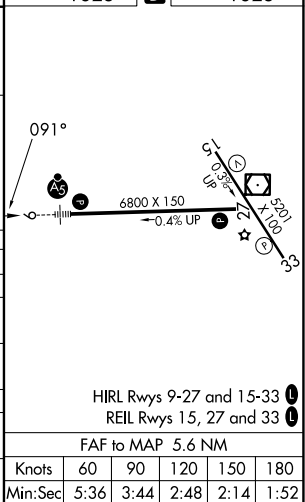
RHINELANDER/ONEIDA COUNTY (RHI)

ADF or DME required.		MALSR 	MISSED APPROACH: Climb to 2100 then climbing right turn to 3500 direct ARSHA LOM/RHI VOR/DME 6.8 DME and hold, continue climb-in-hold to 3500.
NA ** DME from RHI VOR/DME.			
ASOS 126.825	MINNEAPOLIS CENTER 133.65 281.5	UNICOM 123.0 (CTAF)	



ELEV 1623		TDZE 1623
-----------	--	-----------

CATEGORY	A	B	C	D
S-ILS 9	1823-½ 200 (200-½)			
S-LOC 9	2180-½	557 (600-½)	2180-1⅛	557 (600-1⅛)
CIRCLING	2180-1 557 (600-1)	2260-1 637 (700-1)	2260-1¾ 637 (700-1¾)	2280-2 657 (700-2)
ZINGI FIX MINIMUMS**				
S-LOC 9	2040-½	417 (500-½)	2040-¾	417 (500-¾)
CIRCLING	2100-1 477 (500-1)	2260-1 637 (700-1)	2260-1¾ 637 (700-1¾)	2280-2 657 (700-2)



HIRL Rwys 9-27 and 15-33					
REIL Rwys 15, 27 and 33					
FAF to MAP 5.6 NM					
Knots	60	90	120	150	180
Min:Sec	5:36	3:44	2:48	2:14	1:52

EC-3, 30 OCT 2025 to 27 NOV 2025

EC-3, 30 OCT 2025 to 27 NOV 2025