

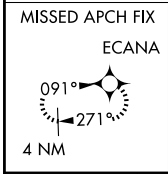
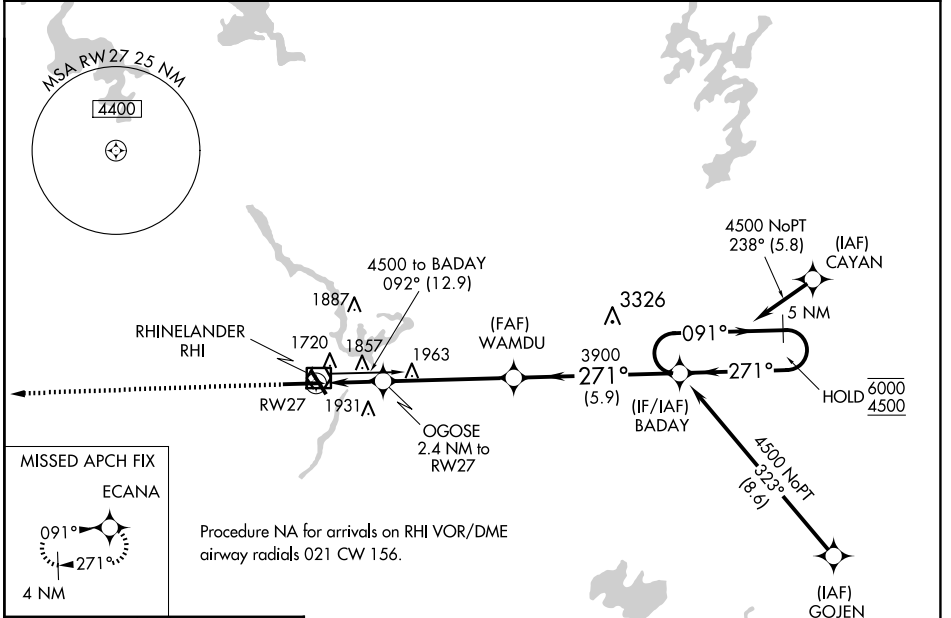
WAAS CH 50217 W27A	APP CRS 271°	Rwy Ldg TDZE 1605 Apt Elev 1623
--	------------------------	---

RNAV (GPS) RWY 27

RHINELANDER/ONEIDA COUNTY (RHI)

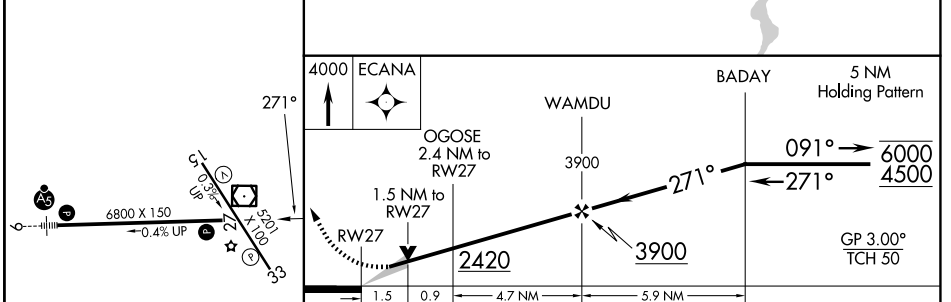
RNP APCH - GPS.	<p>▽ For uncompensated Baro-VNAV systems, LNAV/VNAV ▲ NA below -22°C or above 54°C.</p>	<p>MISSED APPROACH: Climb to 4000 direct ECANA and hold.</p>

ASOS 126.825	MINNEAPOLIS CENTER 133.65 281.5	UNICOM 123.0 (CTAF) 0
------------------------	---	--



Procedure NA for arrivals on RHI VOR/DME airway radials 021 CW 156.

ELEV 1623	D	TDZE 1605
-----------	----------	-----------



CATEGORY	A	B	C	D
LPV DA		1805- ³ / ₄	200 (200- ³ / ₄)	
LNAV/VNAV DA		1920- ⁷ / ₈	315 (300- ⁷ / ₈)	
LNAV MDA	2120-1	515 (500-1)	2120-1 ³ / ₈	515 (500-1 ³ / ₈)
CIRCLING	2120-1 497 (500-1)	2260-1 637 (700-1)	2260-1 ³ / ₄ 637 (700-1 ³ / ₄)	2280-2 657 (700-2)

HIRL Rwy 9-27 and 15-33 **0**
REIL Rwy 15, 27 and 33 **0**

EC-3, 30 OCT 2025 to 27 NOV 2025

EC-3, 30 OCT 2025 to 27 NOV 2025