

WAAS CH <b>97715</b> <b>W09A</b>	APP CRS <b>091°</b>	Rwy Ldg TDZE Apt Elev	<b>6799</b> <b>1623</b> <b>1623</b>
--	------------------------	-----------------------------	---

**RNAV (GPS) RWY 9**  
RHINELANDER/ONEIDA COUNTY (RHI)

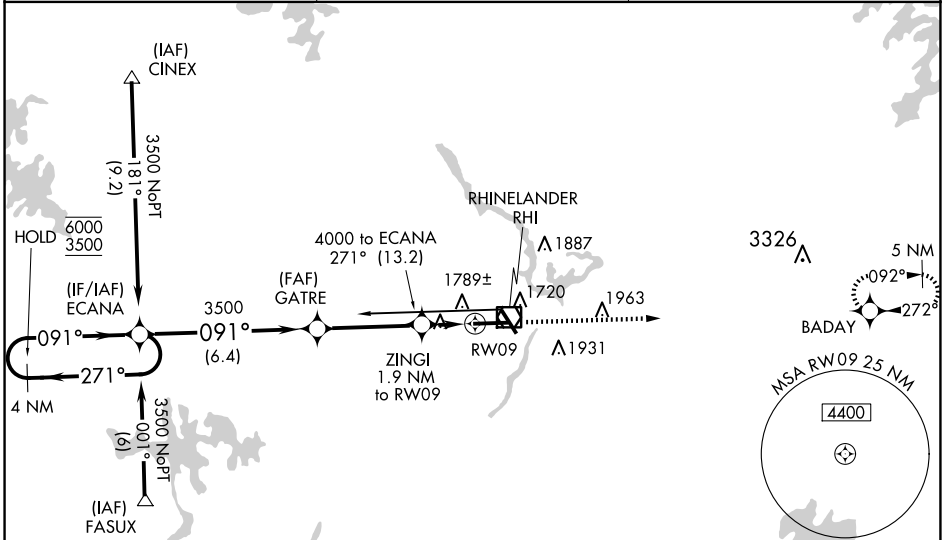
RNP APCH - GPS.

**MALSR**

For uncompensated Baro-VNAV systems, LNAV/VNAV NA below -18°C or above 54°C. For inop ALS, increase LNAV Cats C/D visibility to 1½ SM.

MISSED APPROACH: Climb to 4500 direct BADAY and hold.

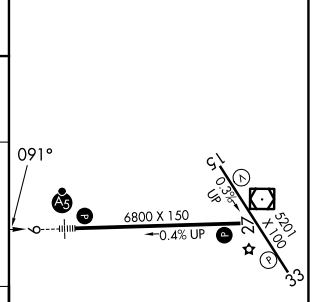
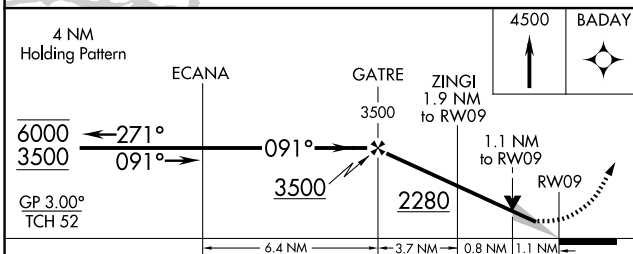
ASOS <b>126.825</b>	MINNEAPOLIS CENTER <b>133.65 281.5</b>	UNICOM <b>123.0 (CTAF)</b>
------------------------	---	-------------------------------



EC-3, 30 OCT 2025 to 27 NOV 2025

EC-3, 30 OCT 2025 to 27 NOV 2025

ELEV 1623	<b>D</b> TDZE 1623
-----------	--------------------



CATEGORY	A	B	C	D
LPV DA		1823-½	200 (200-½)	
LNAV/VNAV DA		2050-¾	427 (500-¾)	
LNAV MDA	2040-½	417 (500-½)	2040-¾	417 (500-¾)
<b>C</b> CIRCLING	2100-1 477 (500-1)	2260-1 637 (700-1)	2260-1¾ 637 (700-1¾)	2280-2 657 (700-2)

HIRL Rwy 9-27 and 15-33  
REIL Rwy 15, 27 and 33