

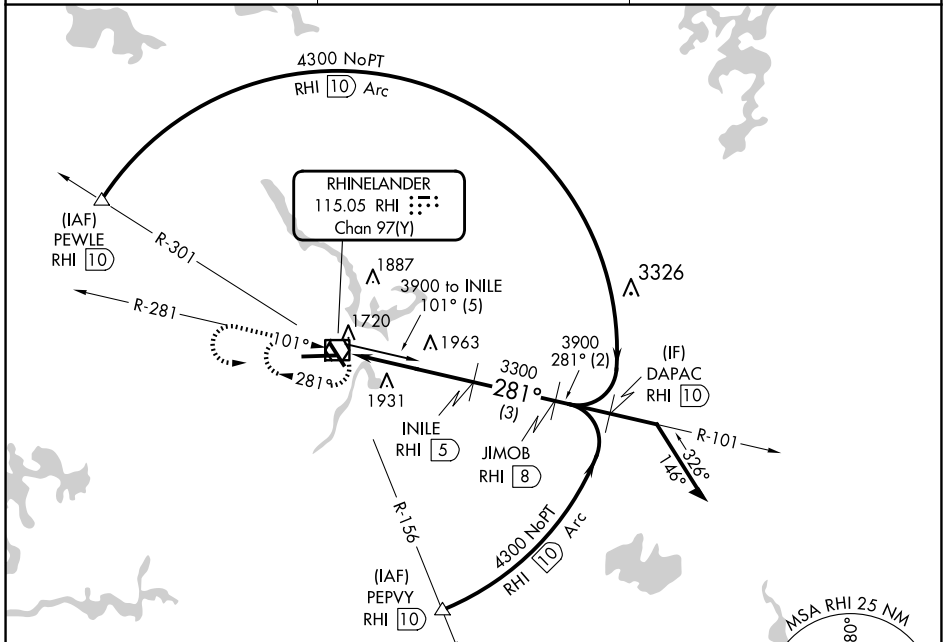
VOR/DME RHI <b>115.05</b> Chan <b>97(Y)</b>	APP CRS <b>281°</b>	Rwy Ldg TDZE Apt Elev	<b>6799</b> <b>1606</b> <b>1624</b>
---	------------------------	-----------------------------	---

**VOR/DME RWY 27**  
RHINELANDER/ONEIDA COUNTY (RHI)

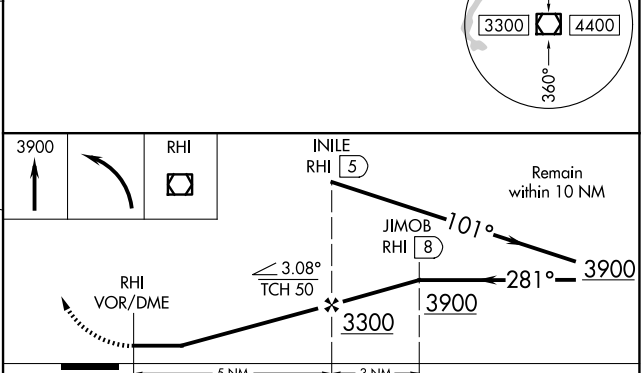
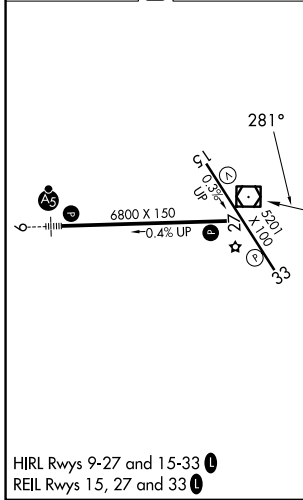
When local altimeter setting not received, use Tomhawk altimeter setting and increase all MDA 60 feet and Cat C/D visibility ¼ mile.

MISSED APPROACH: Climb to 3900 then left turn direct RHI VOR/DME and hold.

ASOS <b>126.825</b>	MINNEAPOLIS CENTER <b>133.65 281.5</b>	UNICOM <b>123.0 (CTAF)</b>
------------------------	---	-------------------------------



ELEV 1624	D	TDZE 1606
-----------	---	-----------



CATEGORY	A	B	C	D
S-27	2220-1 614 (600-1)		2220-1¾ 614 (600-1¾)	
CIRCLING	2220-1 596 (600-1)	2260-1 636 (700-1)	2260-1¾ 636 (700-1¾)	2280-2 656 (700-2)

EC-3, 30 OCT 2025 to 27 NOV 2025

EC-3, 30 OCT 2025 to 27 NOV 2025