

LOC I-MTO 111.1	APP CRS 296°	Rwy Ldg TDZE Apt Elev	6501 718 722
---------------------------	------------------------	-----------------------------	---

ILS or LOC RWY 29

COLES COUNTY MEML (MTO)

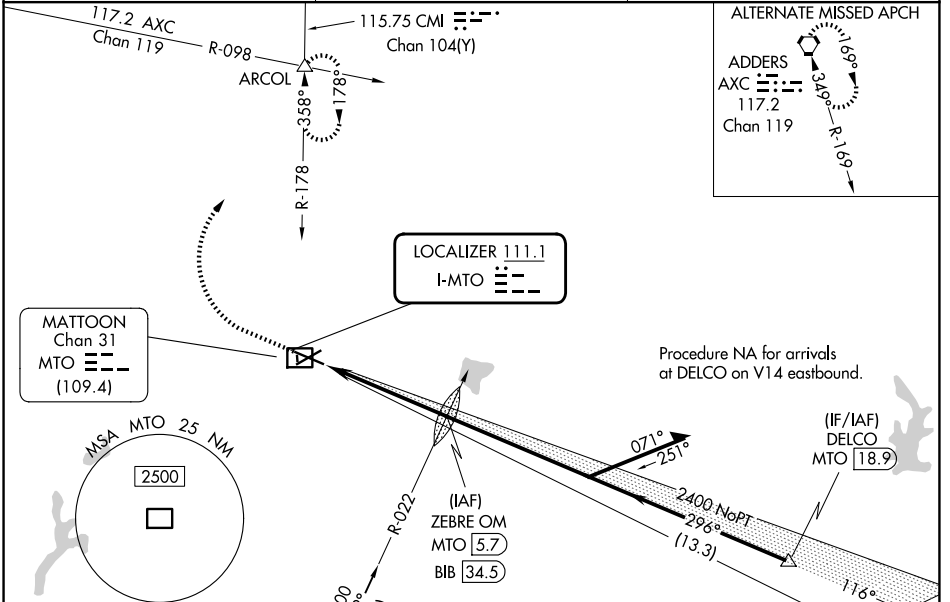
DME required for procedure entry from BIB VORTAC.

MALSR
AS

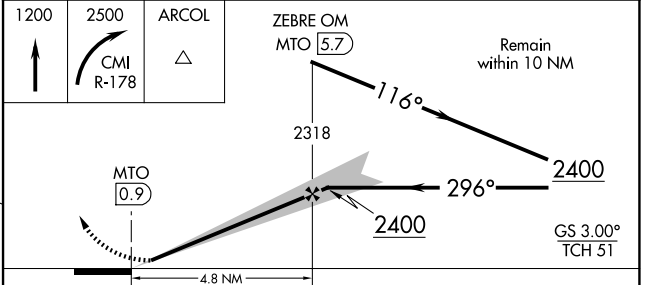
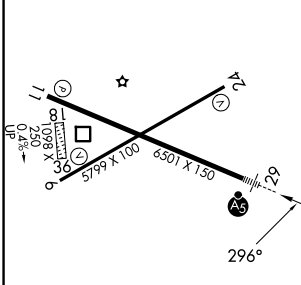
MISSED APPROACH: Climb to 1200 then climbing right turn to 2500 on CMI R-178 to ARCOL INT and hold.

▼ DME from MTO DME. Simultaneous reception of I-MTO and
▲ NA MTO DME required. Circling NA to Rwy 18 and 36.

ASOS 118.475	CHAMPAIGN APP CON★ 132.85 290.225	UNICOM 122.7 (CTAF) 0
------------------------	---	--



ELEV 722	D	TDZE 718
----------	----------	----------



CATEGORY	A	B	C	D
S-ILS 29		918-1/2	200 (200-1/2)	
S-LOC 29	1160-1/2	442 (500-1/2)	1160-7/8	442 (500-7/8)
CIRCLING	1160-1 438 (500-1)	1180-1 458 (500-1)	1240-1 1/2 518 (600-1 1/2)	1380-2 658 (700-2)

MATTOON/CHARLESTON, ILLINOIS
Amdt 8 10OCT19

39°29'N-88°17'W

COLES COUNTY MEML (MTO)

ILS or LOC RWY 29

EC-3, 30 OCT 2025 to 27 NOV 2025

EC-3, 30 OCT 2025 to 27 NOV 2025