

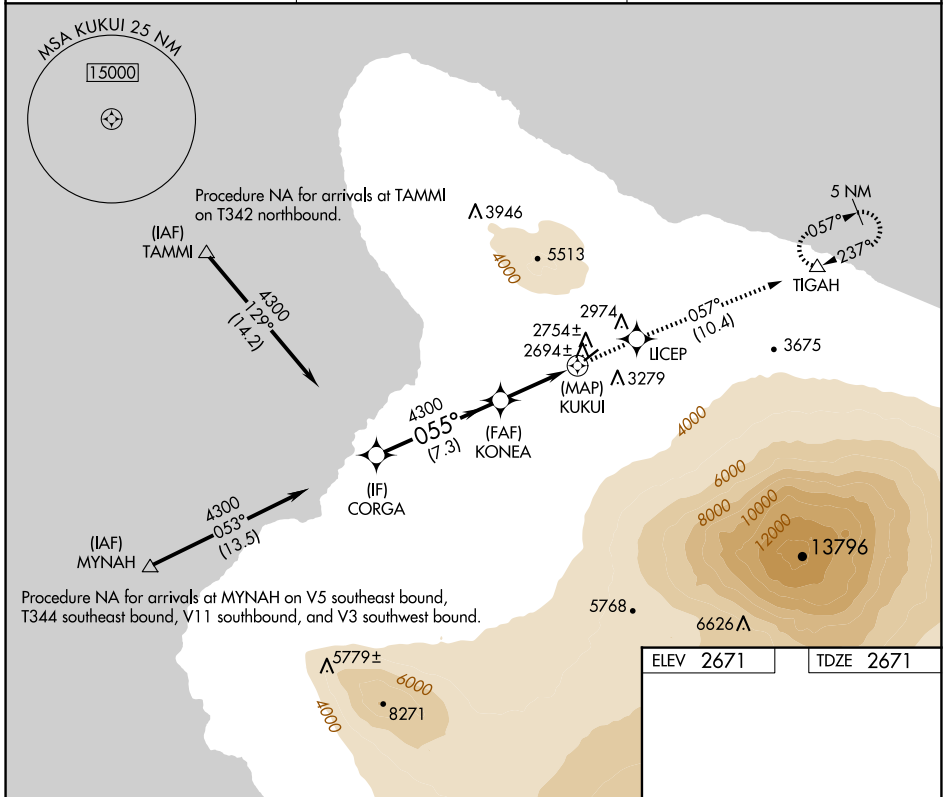
APP CRS	Rwy Idg	<b>5197</b>
<b>055°</b>	TDZE	<b>2671</b>
	Apt Elev	<b>2671</b>

# RNAV (GPS) RWY 4

WAIMEA-KOHALA (MUE)(PHMU)

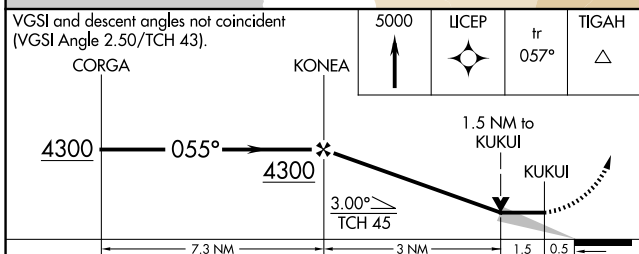
RNP APCH - GPS.	MISSED APPROACH: Climb to 5000 direct LICEP and on track 057° to TIGAH and hold.
<p>▼ Circling NA northwest of Rwy 4-22.</p> <p>▲ NA When local altimeter setting not received, procedure NA.</p>	

AWOS-3PT <b>120.0</b>	HCF CENTER <b>118.45 278.3</b>	CTAF <b>122.9 0</b>
--------------------------	-----------------------------------	------------------------

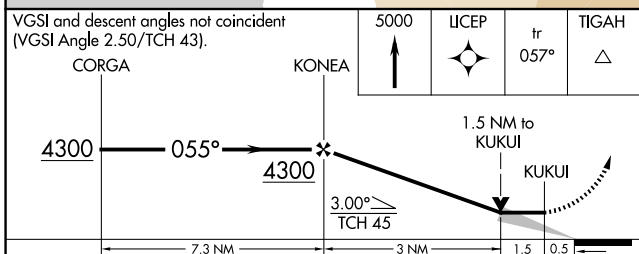


PAC: 02 OCT 2025 to 27 NOV 2025

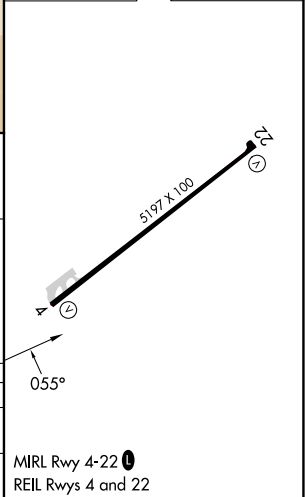
PAC: 02 OCT 2025 to 27 NOV 2025



ELEV 2671	TDZE 2671
-----------	-----------



CATEGORY	A	B	C	D
LNVA MDA	3220-1 549 (600-1)		3220-1½ 549 (600-1½)	
CIRCLING	3520-1¼ 849 (900-1¼)		3620-2¾ 949 (1000-2¾)	3980-3 1309 (1400-3)



MIRL Rwy 4-22 0  
REIL Rws 4 and 22