

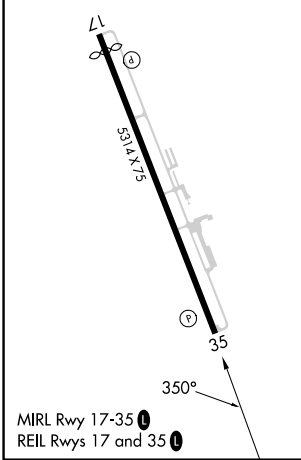
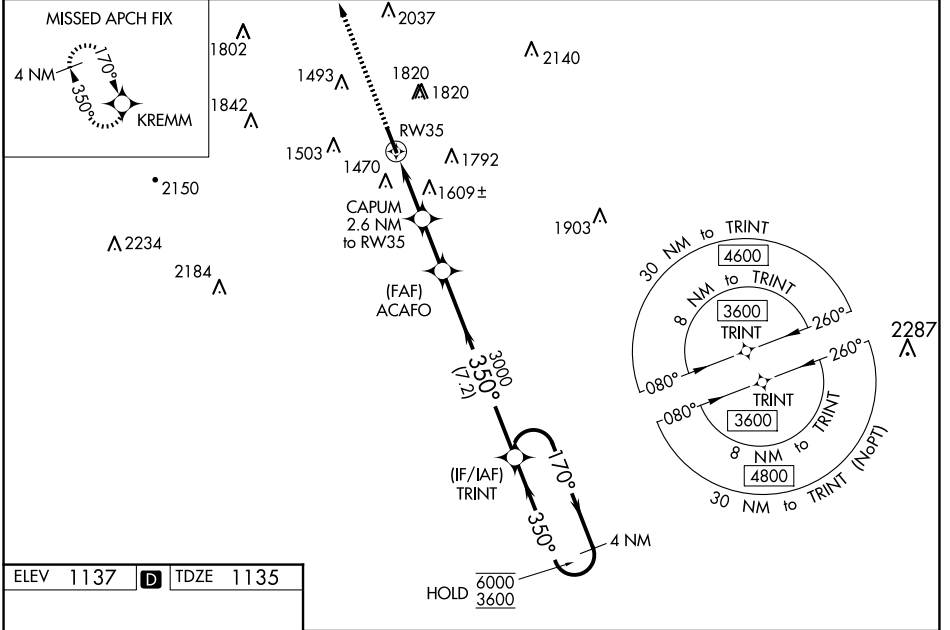
WAAS CH 70518 W35A	APP CRS 350°	Rwy Idg TDZE 1135 Apt Elev 1137
--	------------------------	---

RNAV (GPS) RWY 35

HAMILTON MUNI (VGC)

RNP APCH.	Baro-VNAV and VDP NA when using Syracuse altimeter setting. Rwy 35 helicopter visibility reduction below 3/4 SM NA. For uncompensated Baro-VNAV systems, LNAV/VNAV NA below -17°C or above 50°C. When local altimeter setting not received, use Syracuse altimeter setting and increase LPV DA to 1748, LNAV/VNAV DA to 2164 and all MDA 180 feet; increase LPV visibility to 1 3/4 SM and LNAV Cat A/B visibility to 1 1/2 SM and Cat C visibility to 2 1/2 SM.	MISSED APPROACH: Climb to 3500 direct KREMM and hold.
-----------	--	---

AWOS-3P 119.425	SYRACUSE APP CON 126.125 269.125	UNICOM 123.0 (CTAF)	122.7
---------------------------	--	-------------------------------	--------------



3500 KREMM	VGSI and RNAV glidepath not coincident (VGSI Angle 4.00/TCH 40).	TRINT	4 NM Holding Pattern
* LNAV only	CAPJUM 2.6 NM to RW35	ACAFO 3000	6000 3600
RW35	*1.6 NM to RW35	*2200	350° 3000
1.6 NM	1 NM	2 NM	7.2 NM
			GP 3.77° TCH 40

CATEGORY	A	B	C	D
LPV DA	1581-1 3/8 446 (500-1 3/8)			NA
LNAV/VNAV DA	1997-4 862 (900-4)			NA
LNAV MDA	1860-1	725 (800-1)	1860-2 725 (800-2)	NA
CIRCLING	2040-1 1/4 903 (1000-1 1/4)	2120-1 1/2 983 (1000-1 1/2)	2340-3 1203 (1300-3)	NA

NE-2, 30 OCT 2025 to 27 NOV 2025

NE-2, 30 OCT 2025 to 27 NOV 2025