

WAAS CH 56306 W22A	APP CRS 218°	Rwy Ldg TDZE Apt Elev	5000 315 316
--	------------------------	-----------------------------	---

RNAV (GPS) RWY 22

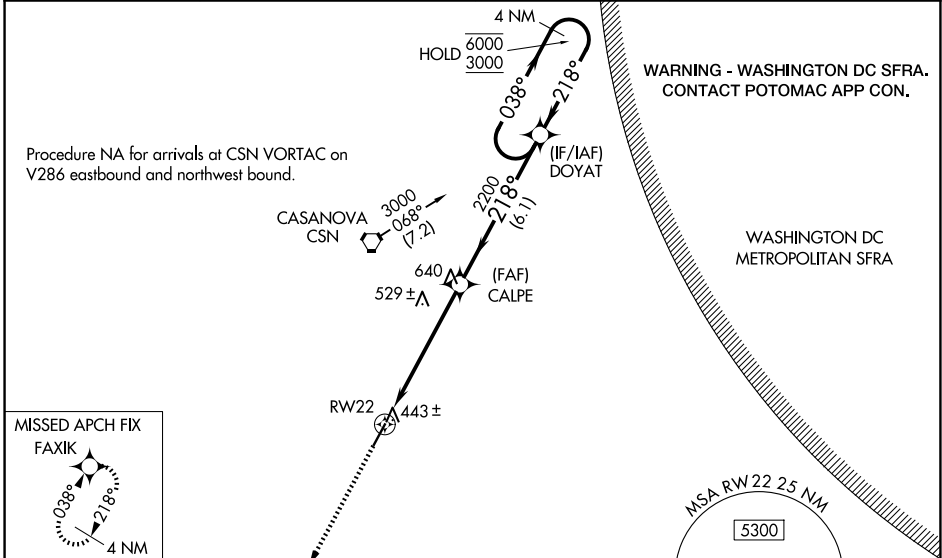
CULPEPER RGNL (CJR)

RNP APCH - GPS.

▼ Rwy 22 helicopter visibility reduction below 3/4 SM NA. For uncompensated Baro-VNAV systems, LNAV/VNAV NA below -15°C or above 48°C. Baro-VNAV and VDP NA when using IAD altimeter setting. When local altimeter setting not received, use IAD altimeter setting and increase LPV DA to 730 feet; increase LNAV/VNAV DA to 776 feet; increase all MDAs 80 feet and visibility Cats C 1/4 SM and D 1/2 SM.

MISSED APPROACH:
Climb to 3000 direct FAXIK and hold.

AWOS-3 119.325	POTOMAC APP CON 128.525 306.925	CLNC DEL 121.6	UNICOM 123.075 (CTAF)
--------------------------	---	--------------------------	---------------------------------

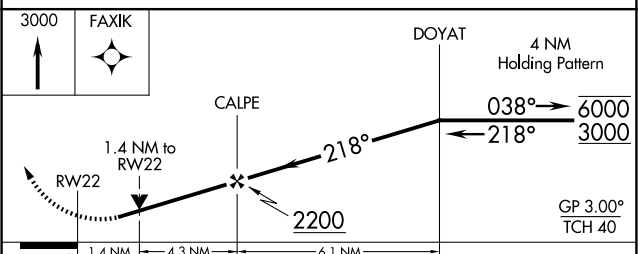
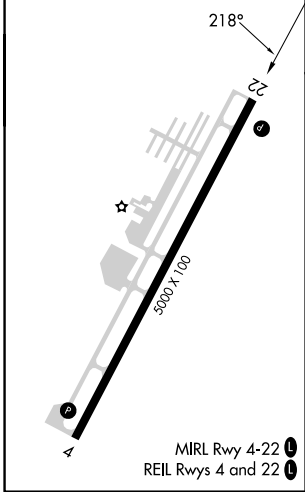


NE-3, 30 OCT 2025 to 27 NOV 2025

NE-3, 30 OCT 2025 to 27 NOV 2025



ELEV 316	TDZE 315
----------	----------



CATEGORY	A	B	C	D
LPV DA	657-1 1/4 342 (400-1 1/4)			
LNAV/VNAV DA	703-1 1/2 388 (400-1 1/2)			
LNAV MDA	800-1	485 (500-1)	800-1 1/4 485 (500-1 1/4)	800-1 1/2 485 (500-1 1/2)