

FEALX TWO DEPARTURE (RNAV)

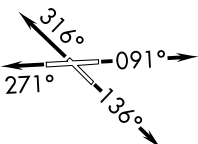
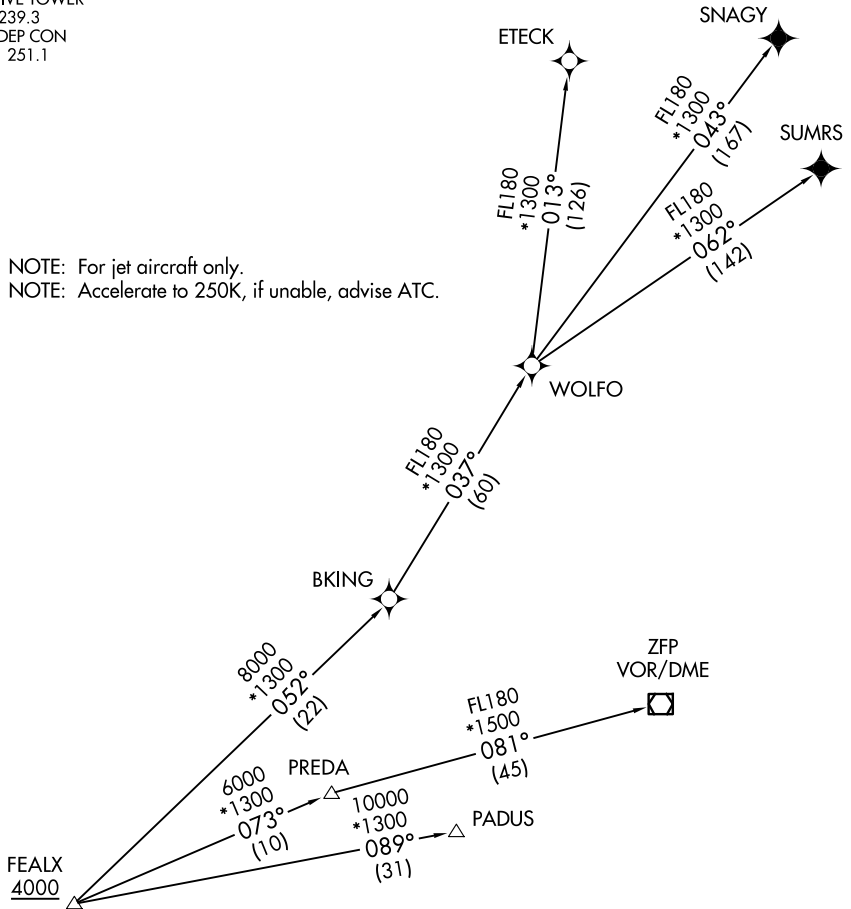
ATIS
119.85
CLINC DEL
127.95
GND CON
121.75
EXECUTIVE TOWER
120.9 239.3
MIAMI DEP CON
126.05 251.1

**TOP ALTITUDE:
ASSIGNED BY ATC**

RNAV 1 - DME/DME/IRU or GPS.
From WOLFO to SNAGY, SUMRS - GPS.

RADAR required.

NOTE: For jet aircraft only.
NOTE: Accelerate to 250K, if unable, advise ATC.



TAKEOFF MINIMUMS

Rwys 9, 13, 31: Standard

Rwy 27: Standard with minimum climb of 500' per NM to 520.

(NARRATIVE ON FOLLOWING PAGE)

NOTE: Chart not to scale.

SE-3, 30 OCT 2025 to 27 NOV 2025

SE-3, 30 OCT 2025 to 27 NOV 2025

FEALX TWO DEPARTURE (RNAV)

(FEALX2.FEALX) 19MAY22

FORT LAUDERDALE, FLORIDA
FORT LAUDERDALE EXEC (FXXE)