

WAAS CH 86608	APP CRS 345°	Rwy Idg TDZE Apt Elev	5002 610 610
W35A			

RNAV (GPS) RWY 35

ROBERT SIBLEY (SZY)

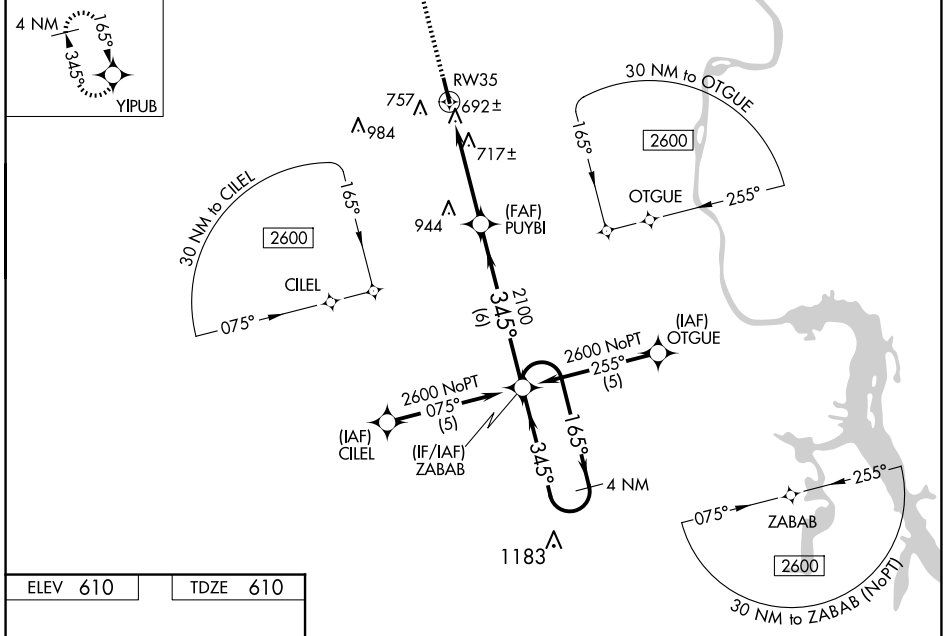
RNP-APCH - GPS

Baro-VNAV NA when using Jackson Rgnl altimeter setting. For uncompensated Baro-VNAV systems, LNAV/VNAV NA below -16°C or above 47°C. Helicopter visibility reduction below 1 SM not authorized. When local altimeter setting not received, use Jackson Rgnl altimeter setting: increase LPV DA to 1042 and all visibilities ¼ SM, increase LNAV/VNAV DA to 1084 and all visibilities ½ SM; increase all MDAs 100 feet and LNAV visibility Cat C and D and Circling visibility Cat D ¼ SM. Straight-in Rwy 35 NA at night, Circling Rwy 17, 35 NA at night.

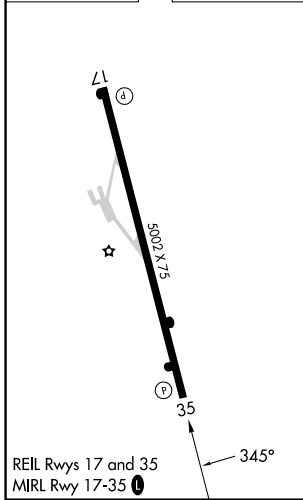
MISSED APPROACH:
Climb to 2600 direct
YIPUB and hold.

AWOS-3 118.425	MEMPHIS CENTER 124.35 318.1	UNICOM 122.7 (CTAF) 0
--------------------------	---------------------------------------	---------------------------------

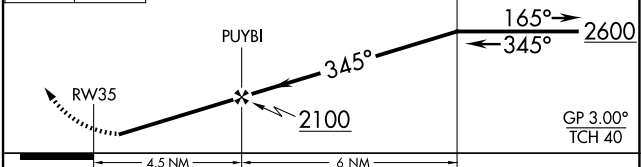
MISSED APCH FIX



ELEV 610	TDZE 610
----------	----------



2600 YIPUB VGSI and RNAV glidepath not coincident (VGSI Angle 4.00°/TCH 29). ZABAB 4 NM Holding Pattern



CATEGORY	A	B	C	D
LPV DA	944-1¼ 334 (400-1¼)			
LNAV/VNAV DA	986-1¼ 376 (400-1¼)			
LNAV MDA	980-1 370 (400-1)			980-1¼ 370 (400-1¼)
CIRCLING	1060-1 450 (500-1)	1080-1 470 (500-1)	1080-1½ 470 (500-1½)	1300-2¼ 690 (700-2¼)

SE-1, 30 OCT 2025 to 27 NOV 2025

SE-1, 30 OCT 2025 to 27 NOV 2025