

APP CRS	Rwy Ldg	4302
239°	TDZE	701
	Apt Elev	704

RNAV (GPS) RWY 24

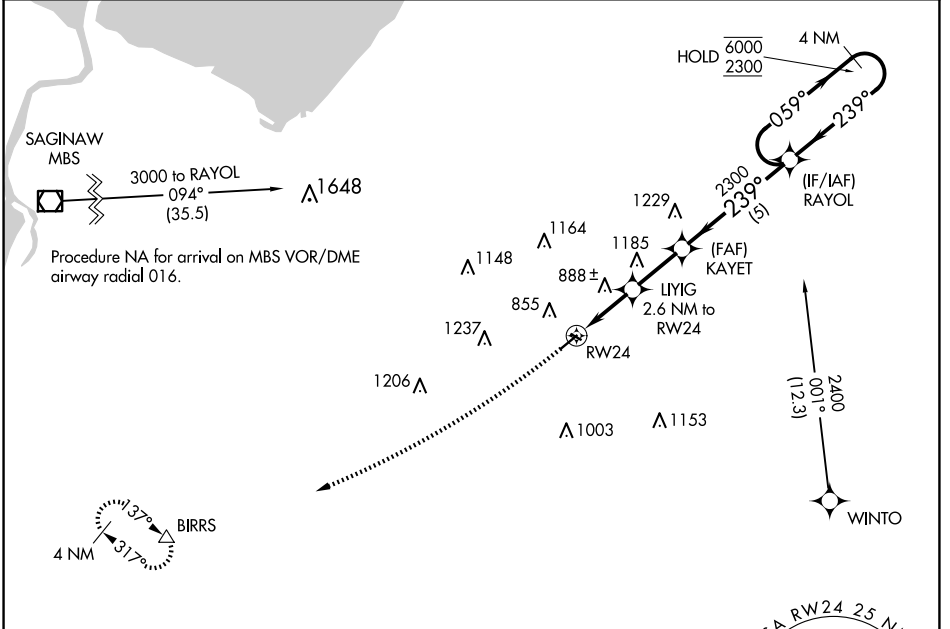
TUSCOLA AREA (CFS)

RNP APCH - GPS.

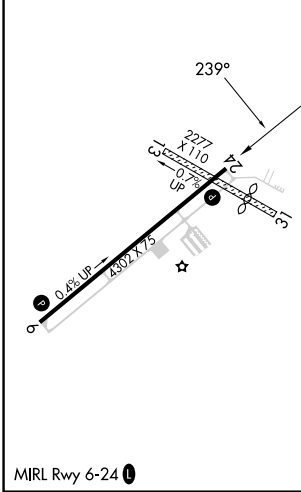
⚠ Circling NA to Rwys 13 and 31. Rwy 24 helicopter visibility reduction below 1 SM NA. Procedure NA at night.

⚠ MISSED APPROACH: Climbing right turn to 3100 direct BIRRS and hold.

AWOS-3 119.275	GREAT LAKES APP CON * 120.95 235.625	UNICOM 123.0 (CTAF) 📞
--------------------------	--	--



ELEV 704	TDZE 701
----------	----------



MIRL Rwy 6-24 📞	3100 BIRRS ⚠		VGSI and descent angles not coincident (VGSI Angle 3.50/TCH 48).		4 NM Holding Pattern	
	LIYIG 2.6 NM to RW24		KAYET 2300		RAYOL 059° → 6000 / 2300	
CATEGORY	A	B	C	D		
LNAV MDA	1140-1	439 (500-1)	1140-1¼ 439 (500-1¼)	NA		
📞 CIRCLING	1200-1	496 (500-1)	1600-2¾ 896 (900-2¾)	NA		

EC-1, 30 OCT 2025 to 27 NOV 2025

EC-1, 30 OCT 2025 to 27 NOV 2025