

WAAS CH 56447 W26A	APP CRS 255°	Rwy Ldg TDZE Apt Elev	3200 464 464
--	------------------------	-----------------------------	---

RNAV (GPS) RWY 26

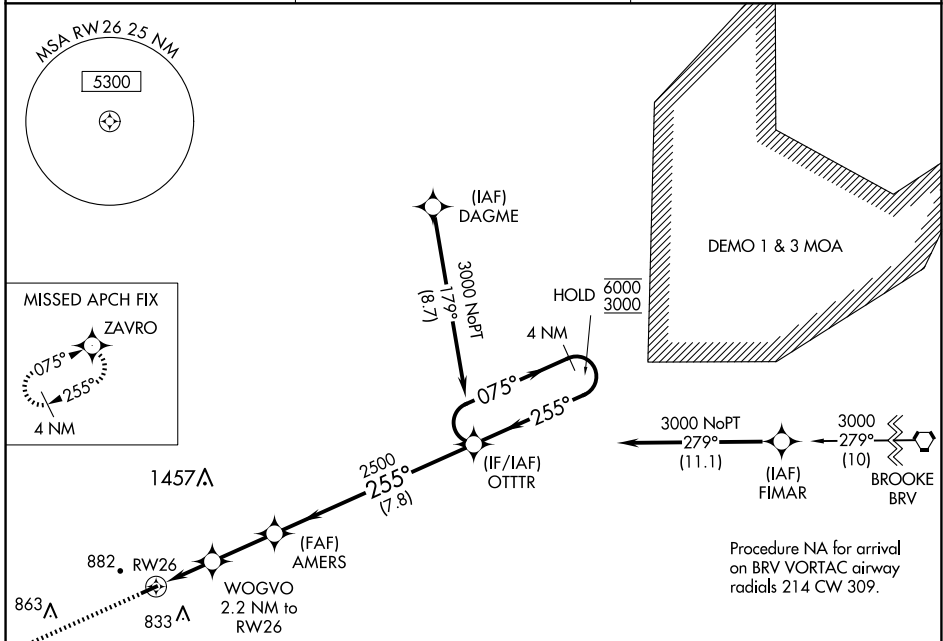
ORANGE COUNTY (OMH)

RNP APCH - GPS.

Procedure NA at night. Rwy 26 helicopter visibility reduction below 1SM NA.
For uncompensated Baro-VNAV systems, LNAV/VNAV NA below -15°C or above 54°C.

MISSED APPROACH:
 Climb to 3100 direct
 ZAVRO and hold.

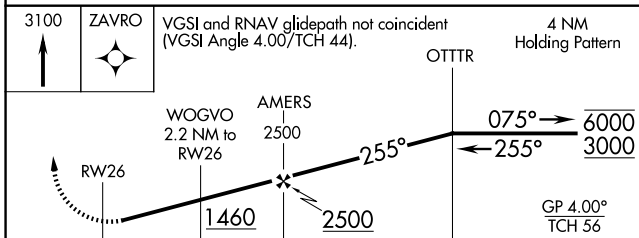
AWOS-3 118.075	POTOMAC APP CON 132.85 323.125	UNICOM 122.8 (CTAF) 0
--------------------------	--	---------------------------------



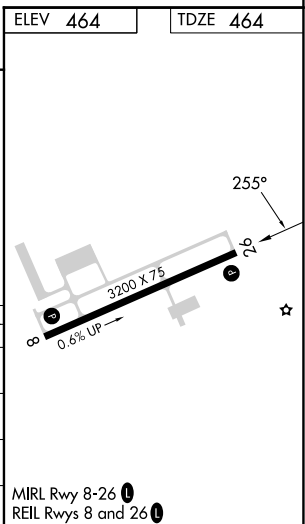
NE-3, 30 OCT 2025 to 27 NOV 2025

NE-3, 30 OCT 2025 to 27 NOV 2025

ELEV 464	TDZE 464
----------	----------



CATEGORY	A	B	C	D
LPV DA	808-1	344 (400-1)		NA
LNAV/VNAV DA	914-1 $\frac{3}{8}$	450 (500-1 $\frac{3}{8}$)		NA
LNAV MDA	1000-1	536 (600-1)		NA
C CIRCLING	1320-1 $\frac{1}{4}$	856 (900-1 $\frac{1}{4}$)		NA



MIRL Rwy 8-26 0
 REIL Rwy 8 and 26 0