

APP CRS	Rwy Idg	<b>3200</b>
<b>075°</b>	TDZE	<b>461</b>
	Apt Elev	<b>464</b>

# RNAV (GPS) RWY 8

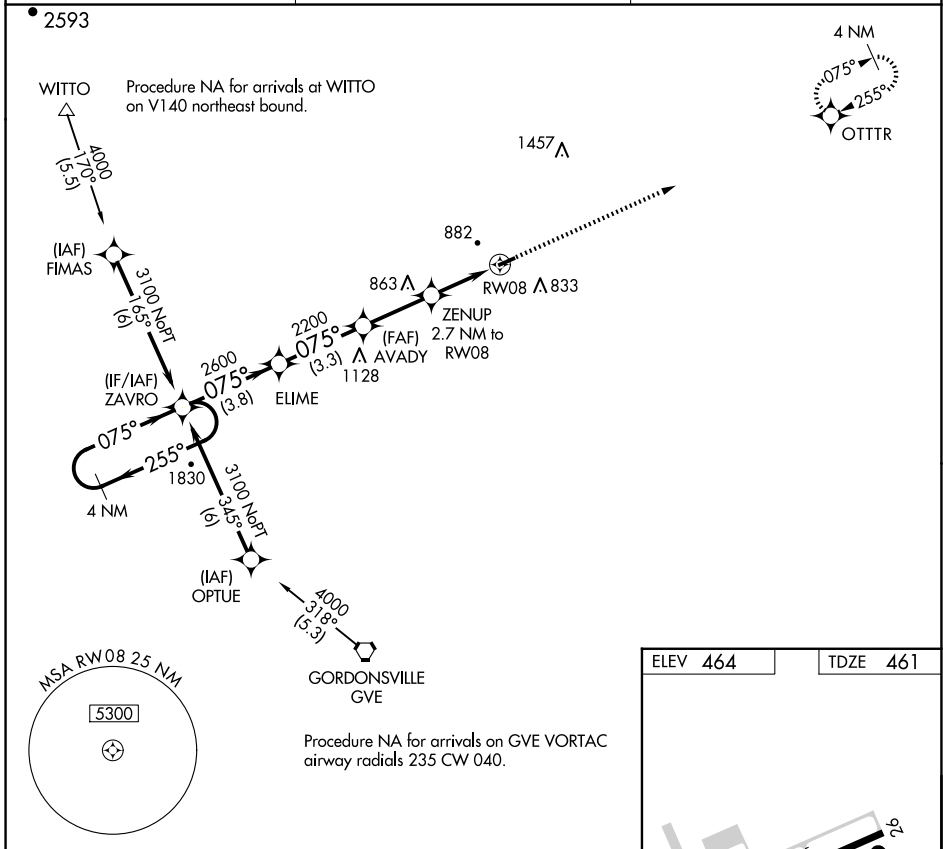
ORANGE COUNTY (OMH)

RNP APCH - GPS.

**V** Circling Rwy 26 NA at night. When local altimeter setting not received, use Charlottesville altimeter setting and increase all MDA 80 feet. Rwy 8 helicopter visibility reduction below SM NA.

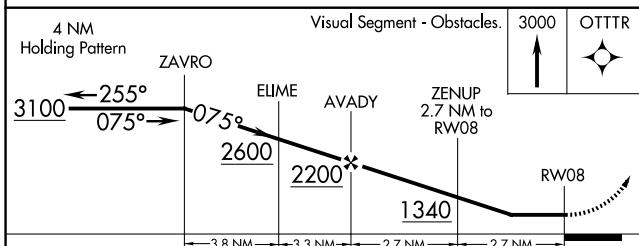
**MISSED APPROACH:**  
Climb to 3000 direct OTTR and hold.

AWOS-3 <b>118.075</b>	POTOMAC APP CON <b>132.85 323.125</b>	UNICOM <b>122.8 (CTAF) 0</b>
--------------------------	--	---------------------------------



NE-3, 30 OCT 2025 to 27 NOV 2025

NE-3, 30 OCT 2025 to 27 NOV 2025



ELEV 464	TDZE 461
----------	----------

3200 X 75

0.6% UP

075°

MIRL Rwy 8-26 0

REIL Rwy 8 and 26 0

CATEGORY	A	B	C	D
LNAV MDA	1040-1	579 (600-1)		NA
<b>C</b> CIRCLING	1300-1¼	836 (900-1¼)		NA