

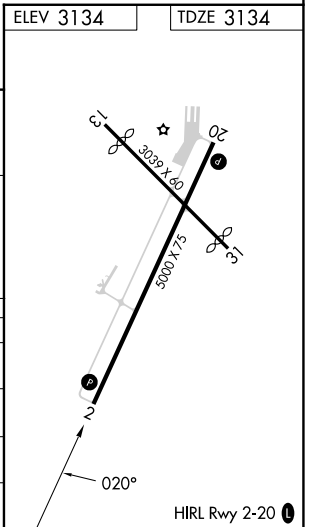
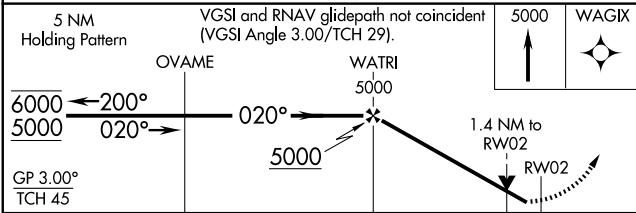
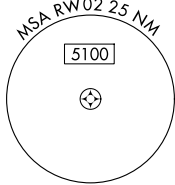
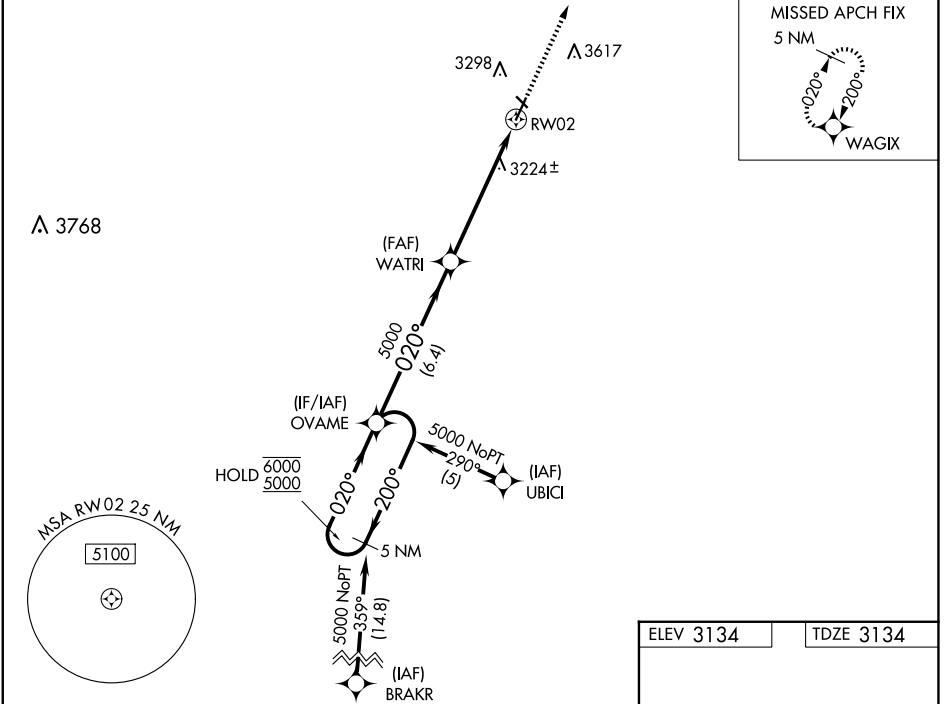
WAAS CH <b>63003</b> <b>W02A</b>	APP CRS <b>020°</b>	Rwy Idg TDZE <b>5000</b> <b>3134</b> Apt Elev <b>3134</b>
--	------------------------	--

# RNAV (GPS) RWY 2

HUGOTON MUNI (HQQ)

RNP APCH-GPS.	MISSED APPROACH: Climb to 5000 direct WAGIX and hold.
<p>⚠ Circling Rwy 13, 31 NA at night. Rwy 2 helicopter visibility reduction below 3/4 SM NA. For uncompensated Baro-VNAV systems, procedure NA below -21°C or above 54°C.</p>	

AWOS-3PT <b>118.6</b>	KANSAS CITY CENTER <b>134.0 257.625</b>	UNICOM <b>122.8 (CTAF) 0</b>
--------------------------	--	---------------------------------



CATEGORY	A	B	C	D
LPV DA	3384-1 250 (300-1)			NA
LNAV/VNAV DA	3425-1 291 (300-1)			NA
LNAV MDA	3600-1	466 (500-1)	3600-1 3/8 466 (500-1 3/8)	NA
<b>C</b> CIRCLING	3660-1	526 (600-1)	3980-2 1/2 846 (900-2 1/2)	NA

NC-2, 30 OCT 2025 to 27 NOV 2025

NC-2, 30 OCT 2025 to 27 NOV 2025