

WAAS CH <b>97432</b> <b>W36A</b>	APP CRS <b>356°</b>	Rwy Idg TDZE <b>1954</b> Apt Elev <b>1954</b>	<b>5949</b>
--	------------------------	---	-------------

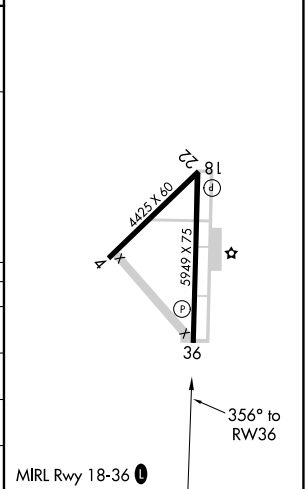
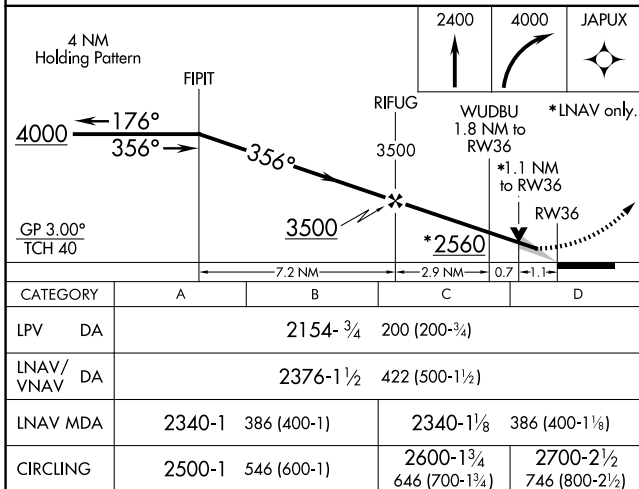
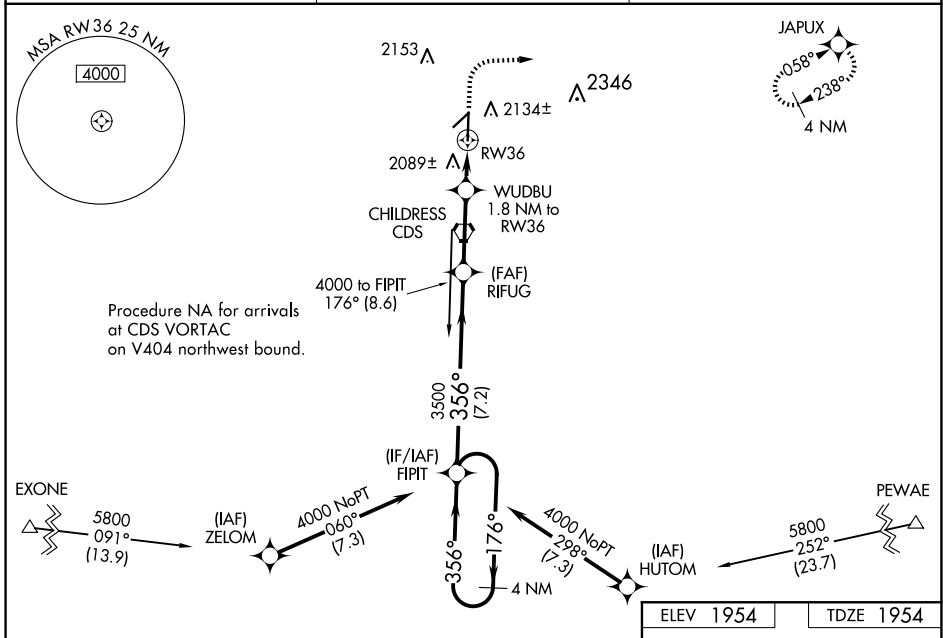
# RNAV (GPS) RWY 36

CHILDRESS MUNI (CDS)

**⚠** Circling to Rwy 4, 18, 22 NA at night. For uncompensated Baro-VNAV systems, LNAV/VNAV NA below -10°C (14°F) or above 54°C (130°F). DME/DME RNP-0.3 NA. When local altimeter setting not received, use Altus/Quartz Mountain Rgnl altimeter setting and increase all DA 188 feet, all MDA 200 feet and increase LPV all Cats visibility  $\frac{3}{8}$  mile, LNAV/VNAV all Cats visibility  $\frac{3}{4}$  mile, LNAV Cats C and D visibility  $\frac{3}{8}$  mile, Circling Cat C visibility  $\frac{3}{4}$  mile, and Circling Cat D visibility  $\frac{1}{2}$  mile. Baro-VNAV and VDP NA with Altus/Quartz Mountain Rgnl altimeter setting.

**MISSED APPROACH:**  
Climb to 2400 then climbing right turn to 4000 direct JAPUX and hold.

ASOS <b>135.125</b>	FORT WORTH CENTER <b>133.5 350.35</b>	UNICOM <b>122.8 (CTAF) 0</b>
------------------------	--	---------------------------------



SC-2, 27 NOV 2025 to 25 DEC 2025

SC-2, 27 NOV 2025 to 25 DEC 2025