

PANAMA CITY, FLORIDA

I LS Z or LOC Z RWY 14L

LOC I-TYF 111.5	APCH CRS 138°	Rwy Ldg 10,008 TDZE 14 Arprt Elev 17
---------------------------	-------------------------	---

[USAF]

TYNDALL AFB (KPAM)

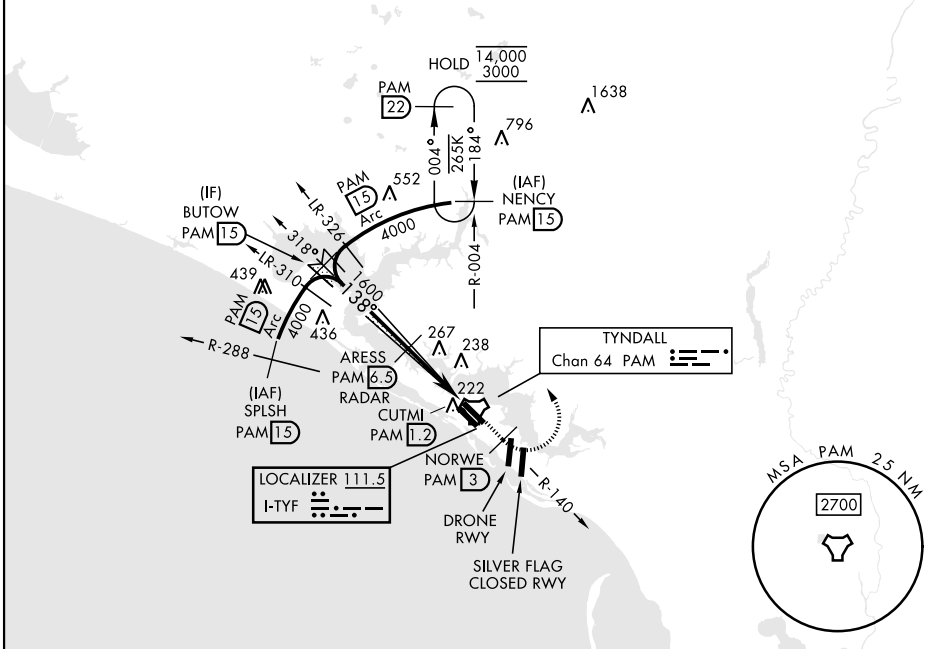
DME or RADAR required.

▼ * When ALS inop, increase RVR to 40 and vis to 3/8 mile.
** When ALS inop, increase CAT AB RVR to 55, vis to 1 mile;
CAT CDE vis to 1 3/8 miles.



MISSED APPROACH: Track outbound PAM TACAN R-140 to 3 DME (NORWE), then turn left to join PAM R-004 to 15 DME (NENCY) and hold. Maintain 3000.

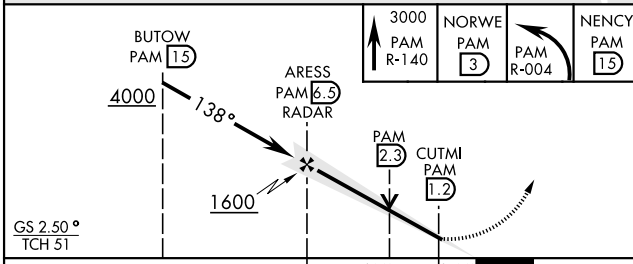
ATIS ★ 254.4	APP CON 125.2 392.1 (N abv 5000') 120.825 379.3 (N blw 5000') 124.15 338.35 (S abv 5000') 119.775 317.45 (S blw 5000')	TOWER ★ 133.95 263.15	GND CON 121.9 259.3	ASR/PAR
------------------------	--	---------------------------------	-------------------------------	---------



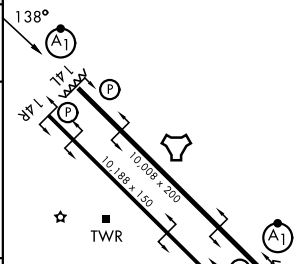
SE-3, 27 NOV 2025 to 25 DEC 2025

SE-3, 27 NOV 2025 to 25 DEC 2025

EMERG SAFE ALT 100 NM 3300



ELEV 17	TDZE 14
---------	---------



CATEGORY	A	B	C	D	E
S-ILS 14L *	214/24		200	(200-1/2)	
S-LOC 14L **	500/24	486 (500-1/2)	500/50	486	(500-1)
CIRCLING	540-1	523 (600-1)	540-1 1/2 523 (600-1 1/2)	580-2	563 (600-2)

Recommend Rwy 14L-32R for apch end engagement of A-Gear. HIRL all rwys

FAF to MAP 5.3 NM					
Knots	60	90	120	150	180
Min:Sec	5:18	3:32	2:39	2:07	1:46

PANAMA CITY, FLORIDA

30° 04' N-85° 35' W

TYNDALL AFB (KPAM)

Amtd 5 27NOV25

I LS Z or LOC Z RWY 14L