

PANAMA CITY, FLORIDA

RNAV (GPS) RWY 14L

| | | | |
|--------------------------|------------------|-------------------------------|--------------------|
| WAAS CH 71271 W14A | APCH CRS 138° | Rwy ldg TDZE Arprt Elev | 10,008 14 17 |
|--------------------------|------------------|-------------------------------|--------------------|

(USAF)

TYNDALL AFB (KPM)

RNP APCH - GPS

- ▼ * When ALS inop, increase RVR to 40, vis to 3/4 mile.
- ** When ALS inop, increase RVR to 45, vis to 7/8 mile.
- *** When ALS inop, increase CAT AB RVR to 55, vis to 1 mile;
CAT CDE vis to 1 3/8 miles.

ALS-F-1

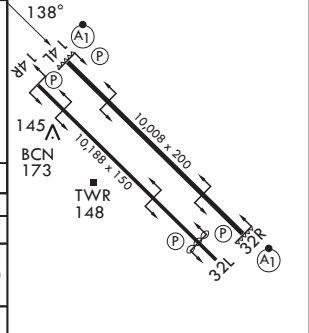
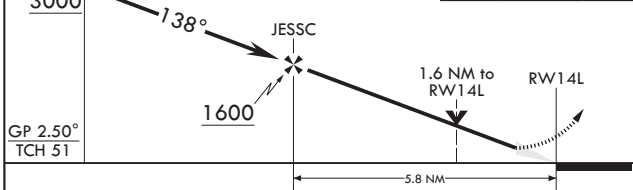
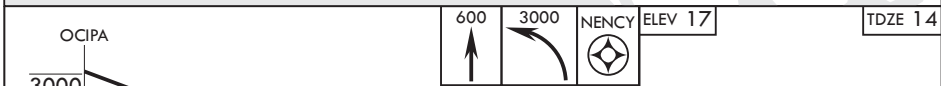
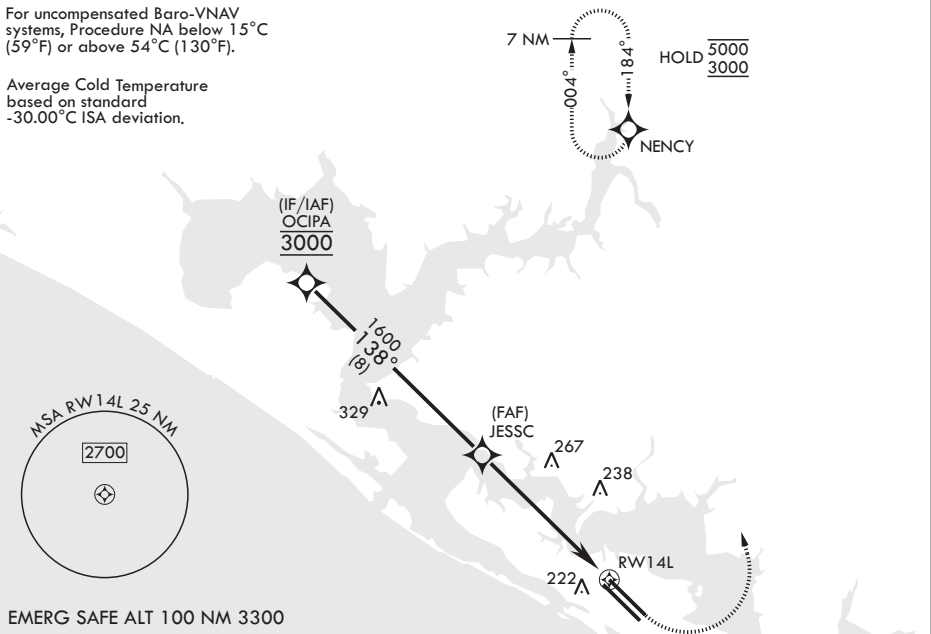


MISSED APPROACH: Climb to 600 then climbing left turn to 3000 direct NENCY and hold.

| | | | | |
|----------------|---|-------------------------|------------------------|---------|
| ATIS* 254.4 | APP CON/DEP CON* 119.775 317.45 BLW 5000' 124.15 338.35 ABV 5000' | TOWER* 133.95 263.15 | GND CON 121.9 259.3 | ASR/PAR |
|----------------|---|-------------------------|------------------------|---------|

For uncompensated Baro-VNAV systems, Procedure NA below 15°C (59°F) or above 54°C (130°F).

Average Cold Temperature based on standard -30.00°C ISA deviation.



| CATEGORY | A | B | C | D | E |
|----------------|--------------------------|--------------------------|---------------------------|---------|-------------|
| LPV DA* | 214/24 | | 200 | (200-½) | |
| LNAV/VNAV DA** | 276/24 262 (300-½) | 287/24 273 (300-½) | 295/24 281 (300-½) | 306/24 | 292 (300-½) |
| LNAV MDA*** | 500/24 | 486 (500-½) | 500/50 | 486 | (500-1) |
| CIRCLING | 540-1 | 523 (600-1) | 540-1½ 523 (600-1½) | 580-2 | 563 (600-2) |

HIRL all rwys
Recommend Rwy 14L-32R for
apch end engagement of A-Gear.

PANAMA CITY, FLORIDA

30°04'N - 85°35'W

TYNDALL AFB (KPM)

Amdt 5 27NOV25

RNAV (GPS) RWY 14L

SE-3, 27 NOV 2025 to 25 DEC 2025

SE-3, 27 NOV 2025 to 25 DEC 2025