

PANAMA CITY, FLORIDA

RNAV (GPS) RWY 32L

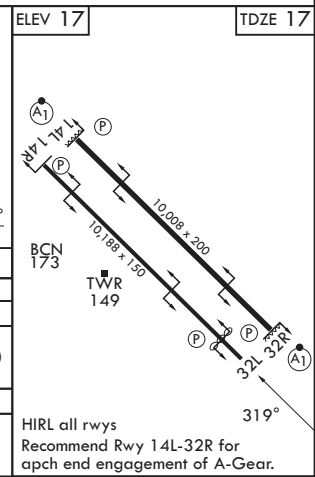
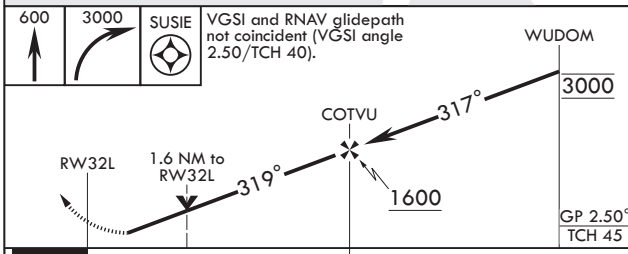
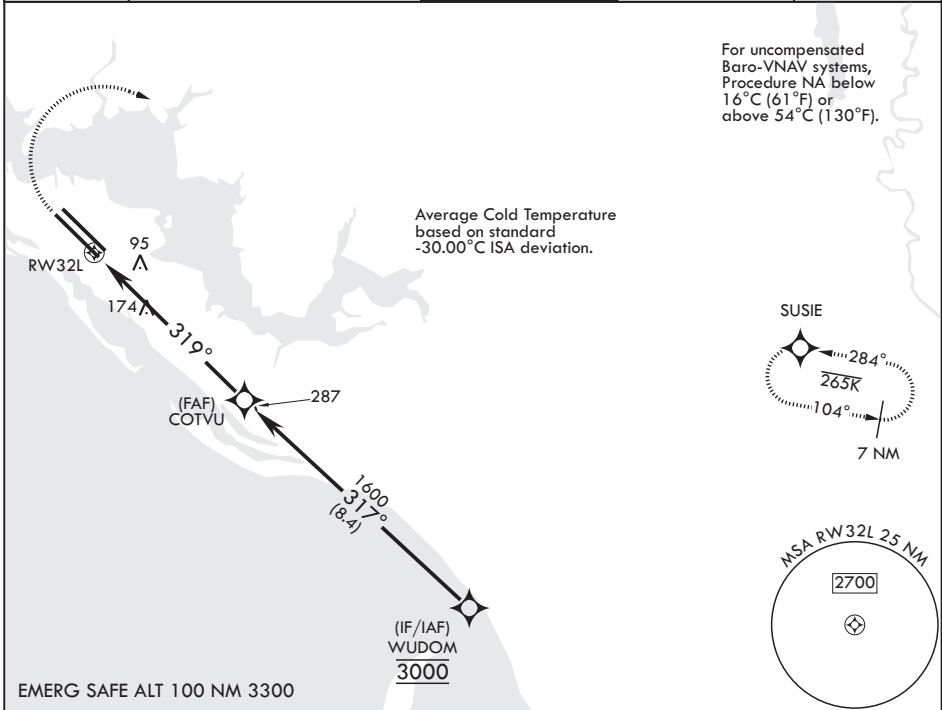
WAAS CH 71279 W32B	APCH CRS 319°	Rwy ldg TDZE 9134 17	Arpt Elev 17
--------------------------	------------------	----------------------------	-----------------

(USAF)

TYNDALL AFB (KPAM)

RNP APCH MISSED APPROACH: Climb to 600 then climbing right turn to 3000 direct SUSIE and hold.

ATIS ★ 254.4	APP CON/DEP CON★ 119.775 317.45 BLW 5000' 124.15 338.35 ABV 5000'	TOWER ★ 133.95 263.15	GND CON 121.9 259.3	ASR/PAR
-----------------	---	--------------------------	------------------------	---------



CATEGORY	A	B	C	D	E
LPV DA	217- ³ / ₄		200	(200- ³ / ₄)	
LNAV/VNAV DA	291- ⁷ / ₈ 274 (300- ⁷ / ₈)	302- ⁷ / ₈ 285 (300- ⁷ / ₈)	310- ⁷ / ₈ 293 (300- ⁷ / ₈)	321- ⁷ / ₈	304 (400- ⁷ / ₈)
LNAV MDA	480-1	463 (500-1)	480-1 ¹ / ₂	463	620-2 ¹ / ₄ 603 (700-2 ¹ / ₄)
CIRCLING	540-1	523 (600-1)	540-1 ¹ / ₂ 523 (600-1 ¹ / ₂)	580-2 563 (600-2)	

HIRL all rwys
Recommend Rwy 14L-32R for
apch end engagement of A-Gear.

PANAMA CITY, FLORIDA

30°04'N - 85°35'W

TYNDALL AFB (KPAM)

Amdt 3 22APR21

RNAV (GPS) RWY 32L

SE-3, 27 NOV 2025 to 25 DEC 2025

SE-3, 27 NOV 2025 to 25 DEC 2025