

PANAMA CITY, FLORIDA

# TACAN Z RWY 14L

TACAN PAM Chan <b>64</b>	APCH CRS <b>130°</b>	Rwy ldg TDZE <b>14</b> Arpt Elev <b>17</b>
-----------------------------	-------------------------	--

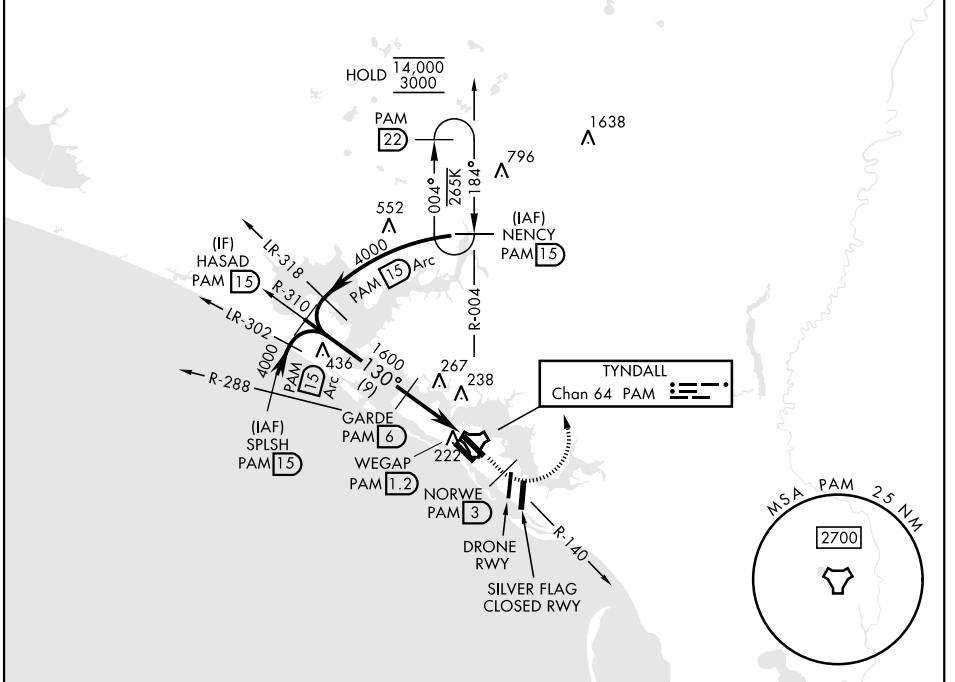
[USAF]

TYNDALL AFB (KPAM)

▼ \* When ALS inop, increase CAT AB RVR to 55 and vis to 1 mile, CAT CDE vis to 1½ miles.

ALSF-1  MISSED APPROACH: Track outbound PAM TACAN R-140 to 3 DME (NORWE), then turn left to join PAM R-004 to 15 DME (NENCY) and hold. Maintain 3000.

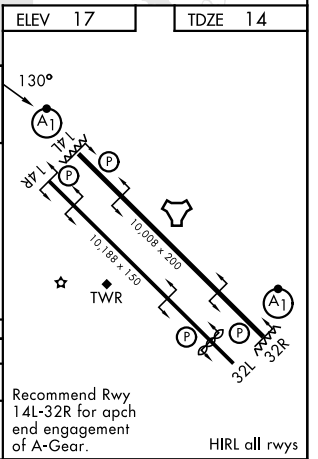
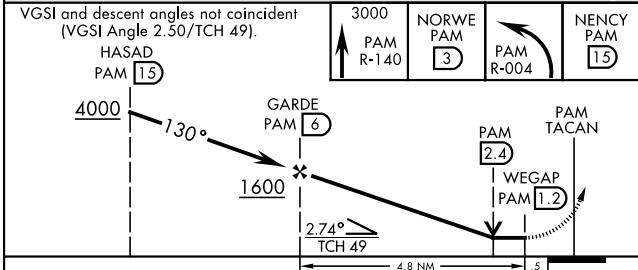
ATIS ★ <b>254.4</b>	APP CON <b>125.2 392.1</b> (N abv 5000') <b>120.825 379.3</b> (N blw 5000') <b>124.15 338.35</b> (S abv 5000') <b>119.775 317.45</b> (S blw 5000')	TOWER ★ <b>133.95 263.15</b>	GND CON <b>121.9 259.3</b>	ASR/PAR
------------------------	--	---------------------------------	-------------------------------	---------



SE-3, 27 NOV 2025 to 25 DEC 2025

SE-3, 27 NOV 2025 to 25 DEC 2025

EMERG SAFE ALT 100 NM 3300	ELEV 17	TDZE 14
----------------------------	---------	---------



CATEGORY	A	B	C	D	E
S-14L*	500/24	486 (500-½)	500/50	486	(500-1)
CIRCLING	540-1	523 (600-1)	540-1½ 523 (600-1½)	580-2	563 (600-2)

Recommend Rwy 14L-32R for apch end engagement of A-Gear.

HIRL all rwys

PANAMA CITY, FLORIDA  
Amdt 4 27NOV25

30°04'N-85°35'W

TYNDALL AFB (KPAM)

# TACAN Z RWY 14L