

WAAS CH <b>40311</b> <b>W01A</b>	APP CRS <b>005°</b>	Rwy Ldg <b>5234</b> TDZE <b>62</b> Apt Elev <b>62</b>
--	------------------------	---

# RNAV (GPS) RWY 1

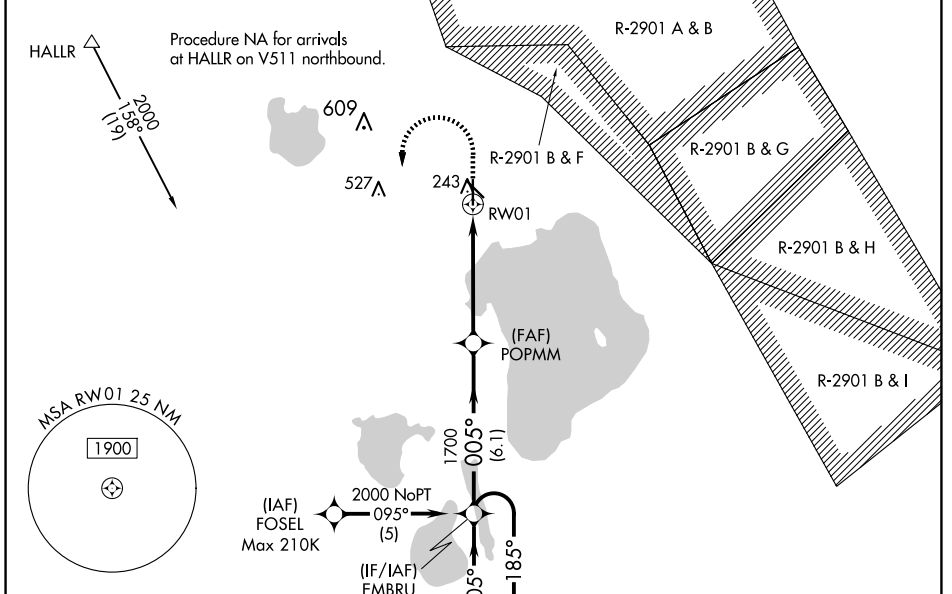
SEBRING RGNL (SEIF)

**RNP APCH-GPS.**

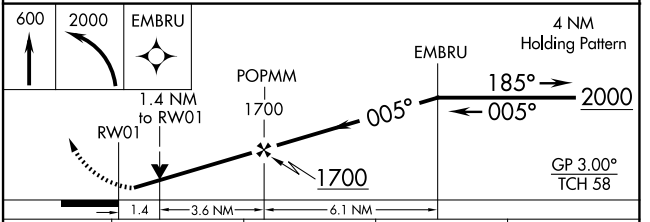
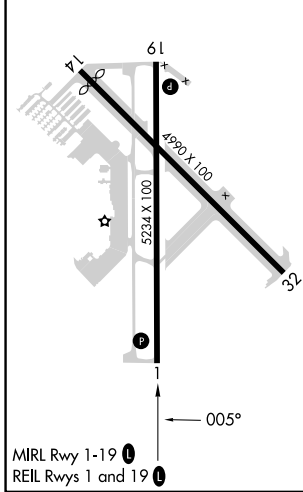
**NA** For uncompensated Baro-VNAV systems, LNAV/VNAV NA below -15°C or above 54°C. When local altimeter setting not received, use VRB altimeter setting; increase LPV DA to 503 feet and all visibilities ½ SM, increase LNAV/VNAV DA to 530 feet and all visibilities ¾ SM; increase all MDAs 140 feet and LNAV visibility Cats C and D ¾ SM, increase Circling visibility Cat C ½ SM and visibility Cat D ¼ SM. Circling Rwy 14 NA at night. VDP and Baro-VNAV NA when using VRB altimeter. Rwy 1 helicopter visibility reduction below ¾ SM NA.

**MISSED APPROACH:** Climb to 600 then climbing left turn to 2000 direct EMBRU and hold.

AWOS-3 <b>119.475</b>	MIAMI CENTER <b>134.55 257.7</b>	UNICOM <b>122.7</b> (CTAF)
--------------------------	-------------------------------------	-------------------------------



ELEV 62	<b>D</b>	TDZE 62
---------	----------	---------



CATEGORY	A	B	C	D
LPV DA	381-1 319 (400-1)			
LNAV/VNAV DA	408-1½ 346 (400-1½)			
LNAV MDA	540-1 478 (500-1)		540-1¾ 478 (500-1¾)	
CIRCLING	600-1 538 (600-1)		600-1½ 880-2¾ 538 (600-1½) 818 (900-2¾)	

SE-3, 27 NOV 2025 to 25 DEC 2025

SE-3, 27 NOV 2025 to 25 DEC 2025