

APP CRS	Rwy Ldg	5234
185°	TDZE	62
	Apt Elev	62

RNAV (RNP) RWY 19

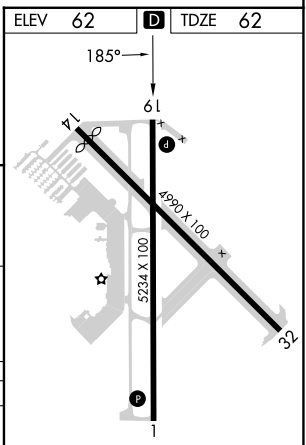
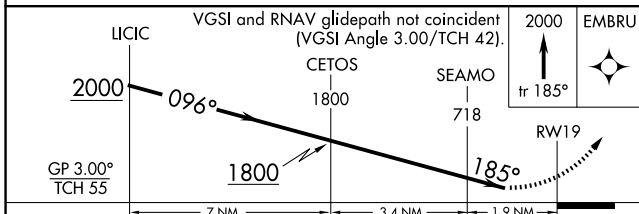
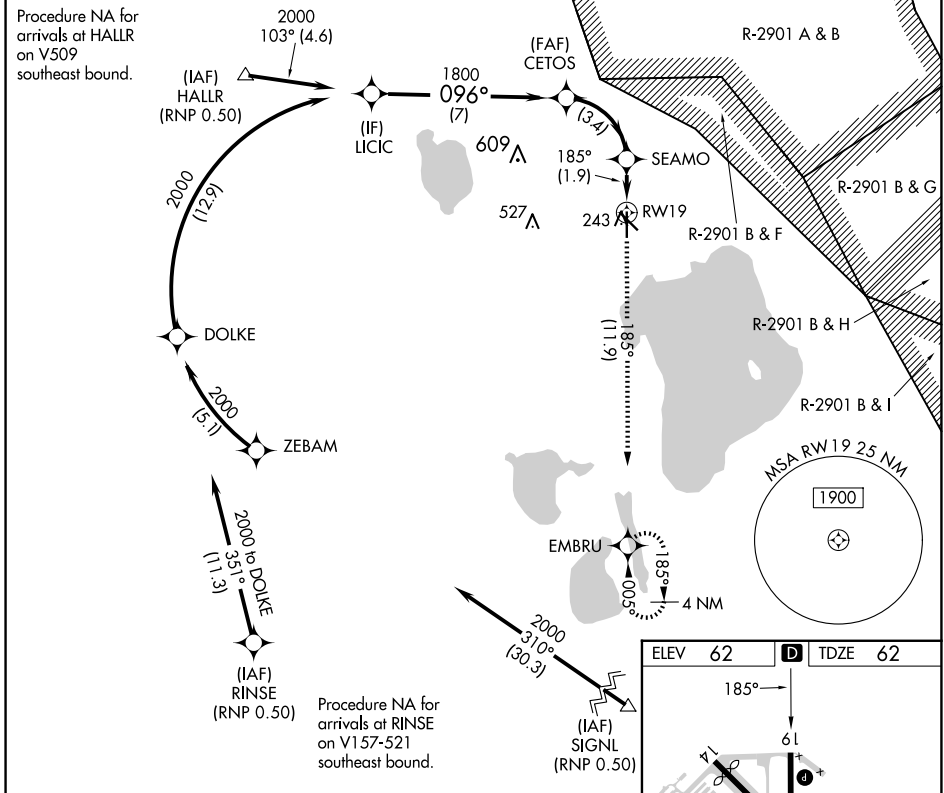
SEBRING RGNL (SEF)

RNP AR APCH GPS.

NA For uncompensated Baro-VNAV systems, procedure NA below -15°C or above 54°C.

MISSED APPROACH: Climb to 2000 on track 185° to EMBRU and hold.

AWOS-3 119.475	MIAMI CENTER 134.55 257.7	UNICOM 122.7 (CTAF)
--------------------------	-------------------------------------	-------------------------------



CATEGORY	A	B	C	D
RNP 0.30 DA	440-1¼ 378 (400-1¼)			

AUTHORIZATION REQUIRED

MIRL Rwy 1-19
REIL Rwy 1 and 19

SE-3, 27 NOV 2025 to 25 DEC 2025

SE-3, 27 NOV 2025 to 25 DEC 2025