

# FELTS FIVE DEPARTURE

AL-402 (FAA)

FELTS FLD (SFF)  
SPOKANE, WASHINGTON

NW-1, 27 NOV 2025 to 25 DEC 2025

**DEPARTURE ROUTE DESCRIPTION**

**TAKEOFF RUNWAYS 4L/R:** Climb on heading 038° to 5000. Expect RADAR vectors to assigned airway/route, thence. . . .

**TAKEOFF RUNWAYS 22L/R:** Climbing left turn heading 190° to 5500. Expect RADAR vectors to assigned airway/route, thence. . . .

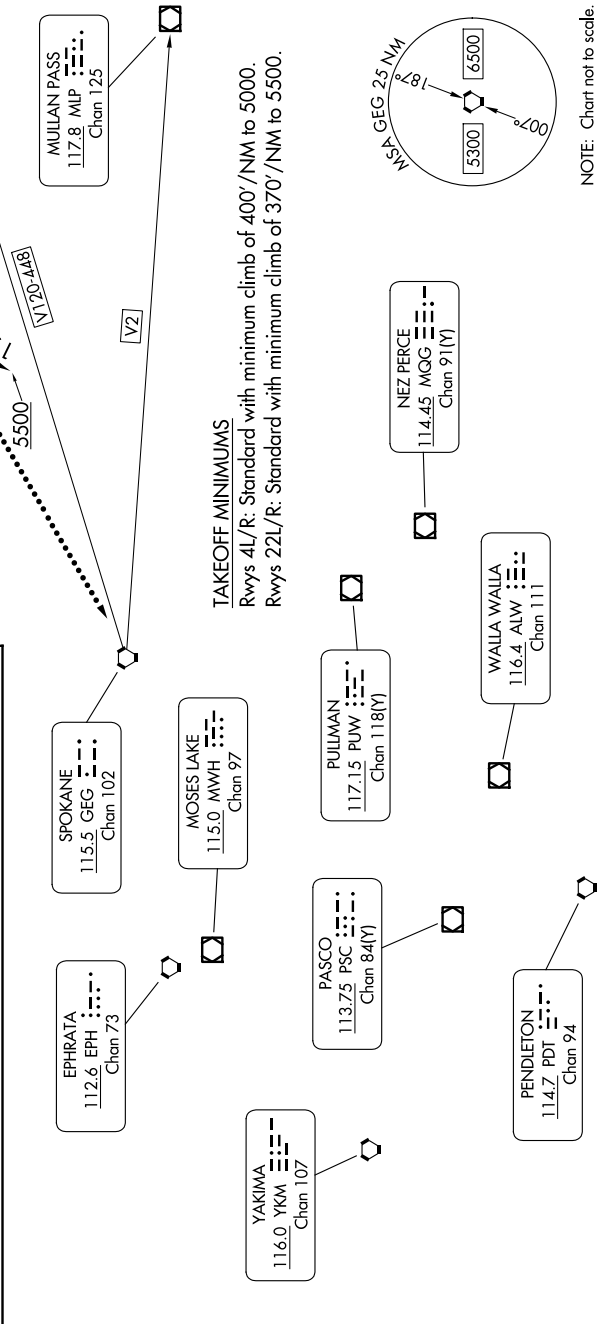
. . . . maintain 12000, expect filed altitude 10 minutes after departure.

**LOST COMMUNICATIONS:** Climb direct GEG VORTAC before proceeding on course. Cross GEG VORTAC at or above: northeast bound V120-448 and eastbound V2 5200.

**TOP ALTITUDE:**  
**12000**

**RADAR required.**

SPOKANE DEP CON  
133.35 263.0  
ATIS  
120.55  
GND CON  
121.7  
FELTS TOWER\*  
132.5 239.025



# FELTS FIVE DEPARTURE

SPOKANE, WASHINGTON  
FELTS FLD (SFF)

NW-1, 27 NOV 2025 to 25 DEC 2025