

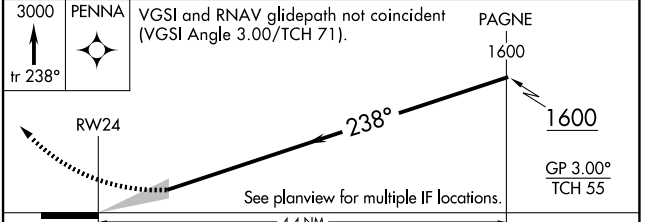
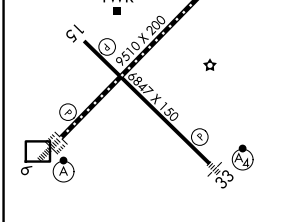
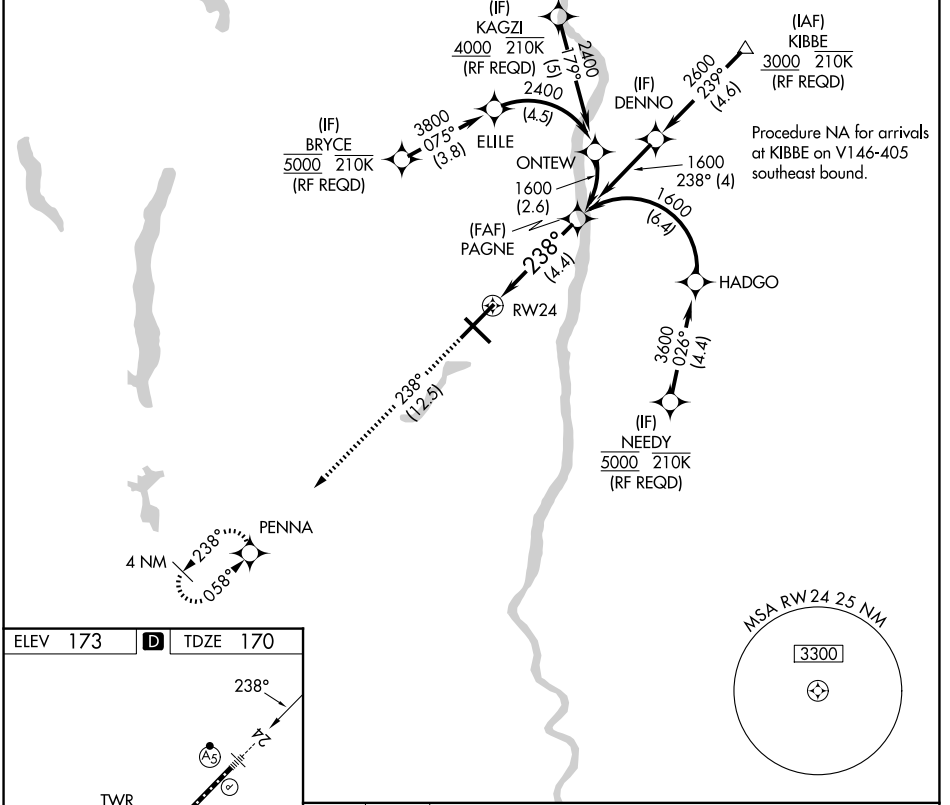
APP CRS	Rwy Ldg	9509
238°	TDZE	170
	Apt Elev	173

RNAV (RNP) Z RWY 24

BRADLEY INTL (BDL)

<p>For uncompensated Baro-VNAV systems, procedure NA below -18°C (0°F) or above 54°C (130°F). GPS required. For inop ALS, increase all Cats visibility to 1½ SM.</p>	<p>MALSRL</p>	<p>MISSED APPROACH: Climb to 3000 on track 238° to PENNA and hold.</p>

D-ATIS 118.15	BRADLEY APP CON 123.95 290.55 (061°-240°) 125.35 281.5 (241°-060°)	BRADLEY TOWER 120.3 351.8	GND CON 121.9 348.6
-------------------------	--	-------------------------------------	-------------------------------



TDZ/CL Rwy 6 and 24				
HIRL Rwys 6-24 and 15-33				
REIL Rwys 6 and 15				
CATEGORY	A	B	C	D
RNP 0.30 DA	622/60		452 (500-1½)	

AUTHORIZATION REQUIRED

NE-1, 27 NOV 2025 to 25 DEC 2025

NE-1, 27 NOV 2025 to 25 DEC 2025