

| | | |
|---|------------------------|--|
| VORTAC LMT 115.9 Chan 106 | APP CRS 328° | Rwy Ldg 10302 TDZE 4095 Apt Elev 4095 |
|---|------------------------|--|

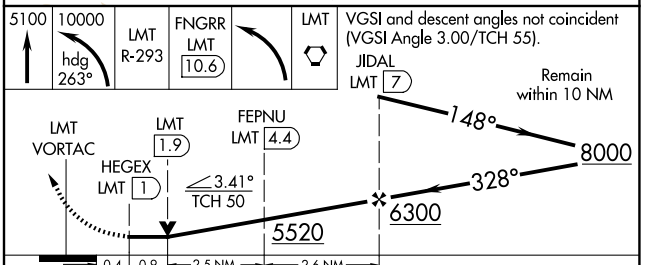
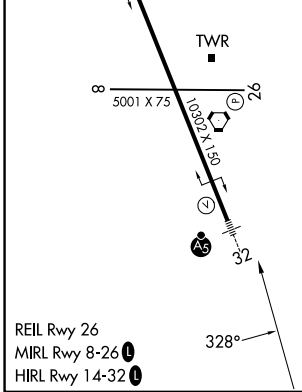
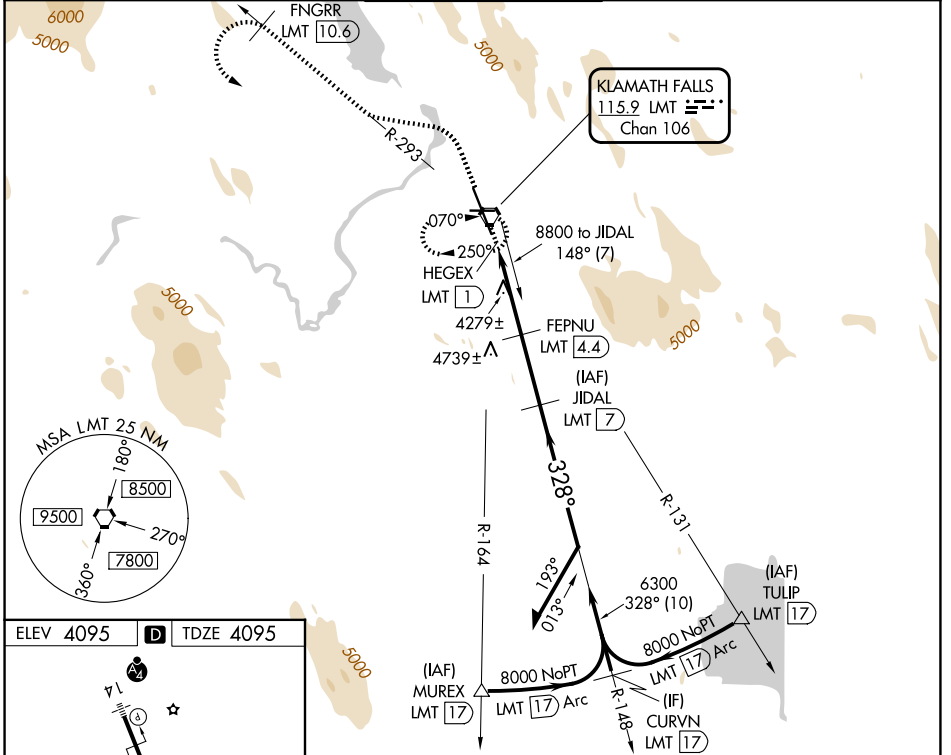
VOR/DME or TACAN RWY 32

CRATER LAKE/KLAMATH RGNL (LMT)

⚠ For inop MALS, increase S-32 Cat E visibility to 1¼ mile. Circling NA for Cat D and E east of Rwy 14-32. Procedure turn NA for Cat E aircraft.

MALS
MISSED APPROACH: Climb to 5100 then climbing left turn to 10000 via heading 263° and via LMT VORTAC R-293 to FNGRR/LMT 10.6 DME then left turn direct LMT VORTAC and hold. (TACAN aircraft climb to 5000 then climbing left turn to 9000 via heading 230° and LMT VORTAC R-265 to OLEBY/15 DME.)

| | | | | |
|----------------------------|--|---|-------------------------------|-------------------------|
| ATIS 126.5 263.0 | KINGSLEY APP CON * 123.675 270.8 | KINGSLEY TOWER * 133.975 (CTAF) 257.8 | GND CON 121.9 348.6 | UNICOM 122.95 |
|----------------------------|--|---|-------------------------------|-------------------------|



| CATEGORY | A | B | C | D | E |
|----------|-----------------------|-------------------------|-------------------------|-------------------------|-------------------------|
| S-32 | 4560/24 | 465 (500-½) | 4560/40 465 (500-¾) | 4560/50 465 (500-1) | 4560/60 465 (500-1¼) |
| CIRCLING | 4840-1 745 (800-1) | 4980-1¼ 885 (900-1¼) | 5420-3 1325 (1400-3) | 5660-3 1565 (1600-3) | 5700-3 1605 (1700-3) |

NW-1, 27 NOV 2025 to 25 DEC 2025

NW-1, 27 NOV 2025 to 25 DEC 2025