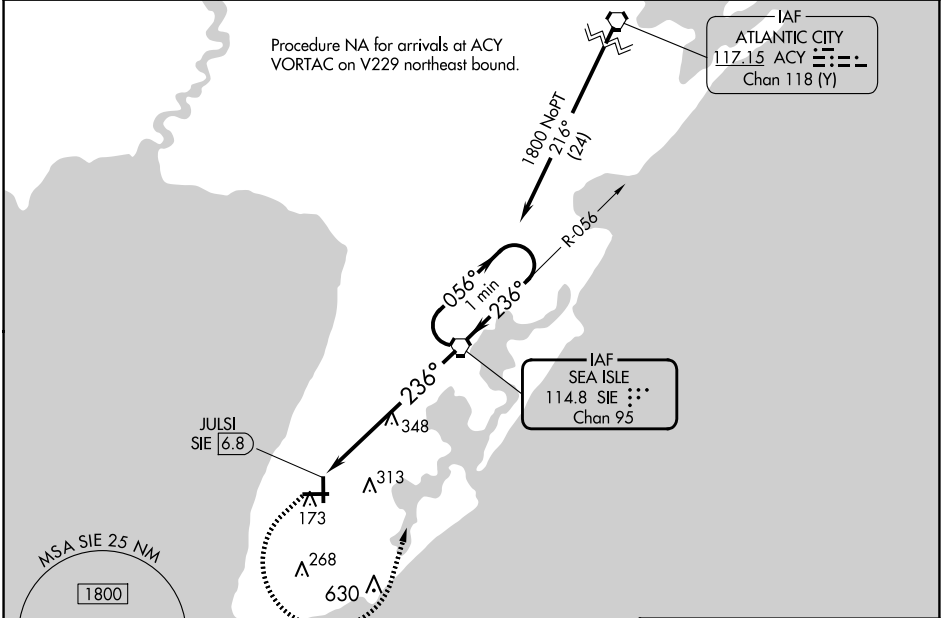


VORTAC SIE 114.8 Chan 95	APP CRS 236°	Rwy Idg TDZE Apt Elev	N/A N/A 22
--	------------------------	-----------------------------	---------------------------------------

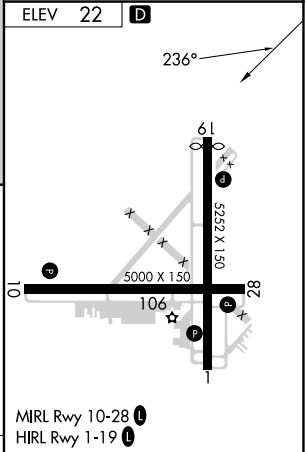
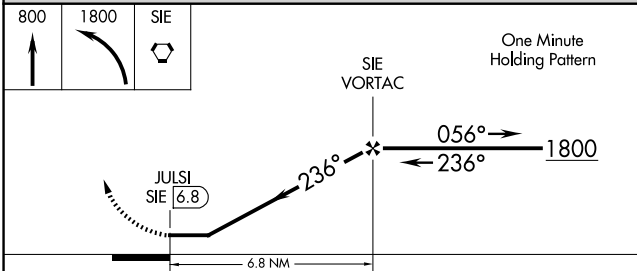
VOR-A
CAPE MAY COUNTY (WWD)

<p>▼ ▲</p> <p>Circling NA for Cats C and D NE of Rwy 19 and 28. Circling Rwy 1 NA at night.</p>	<p>MISSED APPROACH: Climb to 800 then climbing left turn to 1800 direct SIE VORTAC and hold.</p>
---	--

AWOS-3PT 118.275	ATLANTIC CITY APP CON 124.6 327.125	CLNC DEL 121.7	UNICOM 122.7 (CTAF) 0
----------------------------	---	--------------------------	---------------------------------



NE-2, 27 NOV 2025 to 25 DEC 2025



CATEGORY	A	B	C	D	FAF to MAP 6.8 NM					
	640-7/8 618 (700-7/8)	640-1 618 (700-1)	640-1 1/4 618 (700-1 1/4)	980-3 958 (1000-3)	Knots	60	90	120	150	180
C CIRCLING					Min:Sec	6:48	4:32	3:24	2:43	2:16