

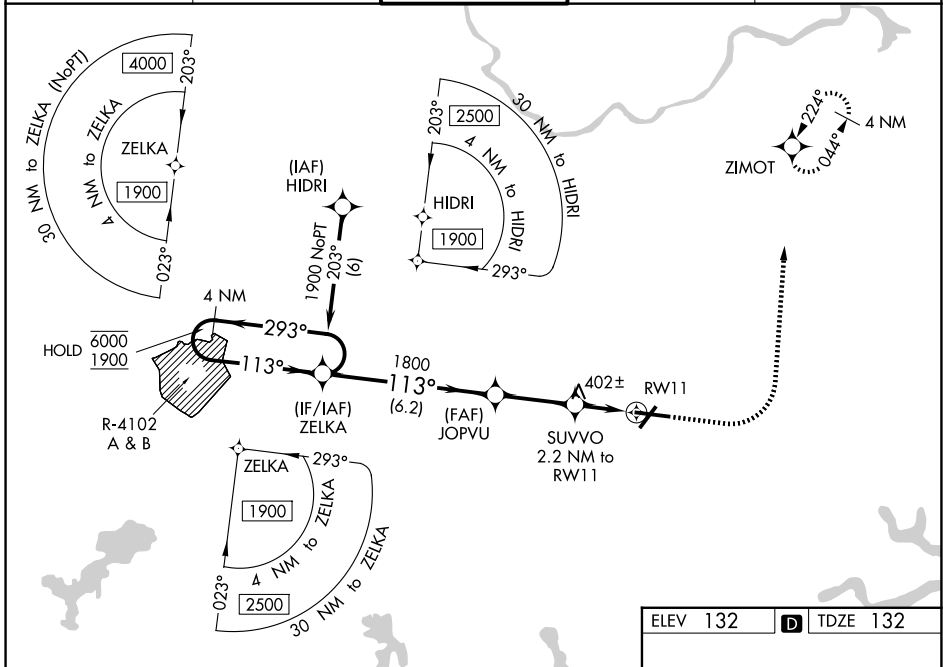
WAAS CH 87000 W11A	APP CRS 113°	Rwy Ldg TDZE 132 Apt Elev 132	7011
--	------------------------	---	-------------

RNAV (GPS) RWY 11

LAURENCE G HANSCOM FLD (BED)

RNP APCH - GPS.		MALSR	MISSED APPROACH: Climb to 1000 then climbing left turn to 2000 direct ZIMOT and hold.
▼	For uncompensated Baro-VNAV systems, LNAV/VNAV NA below -19° C or above 54° C.		
▲	For inop ALS, increase all LNAV/VNAV Cats visibility to RVR 5500.		

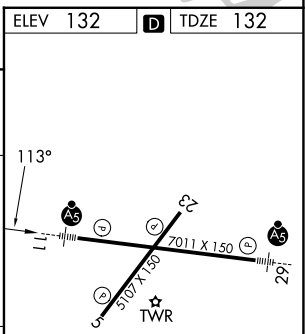
ATIS 124.6	BOSTON APP CON 124.4 279.6	HANSCOM TOWER ★ 118.5 (CTAF) 0 257.2	GND CON 121.7	UNICOM 122.95
----------------------	--------------------------------------	---	-------------------------	-------------------------



NE-1, 27 NOV 2025 to 25 DEC 2025

NE-1, 27 NOV 2025 to 25 DEC 2025

VGSI and RNAV glidepath not coincident (VGSI Angle 3.00/TCH 67).		1000	2000	ZIMOT
4 NM Holding Pattern				
ZELKA		JOPVU	SUVVO	ZIMOT
6000 ← 293°		1800	2.2 NM to RWY 11	
1900 → 113°		880	1.5 NM to RWY 11	
GP 3.00°			0.8	
TCH 50			1.5 NM	
		6.2 NM	2.9 NM	0.8
CATEGORY	A	B	C	D
LPV DA		384/24	252 (300-½)	
LNAV/VNAV DA		474/30	342 (400-¾)	
LNAV MDA	660/24	528 (600-½)	660/55	528 (600-1)
CIRCLING	720-1	588 (600-1)	880-2¼ 748 (800-2¼)	920-2½ 788 (800-2½)



MIRL Rwy 5-23
HIRL Rwy 11-29
REIL Rws 5 and 23